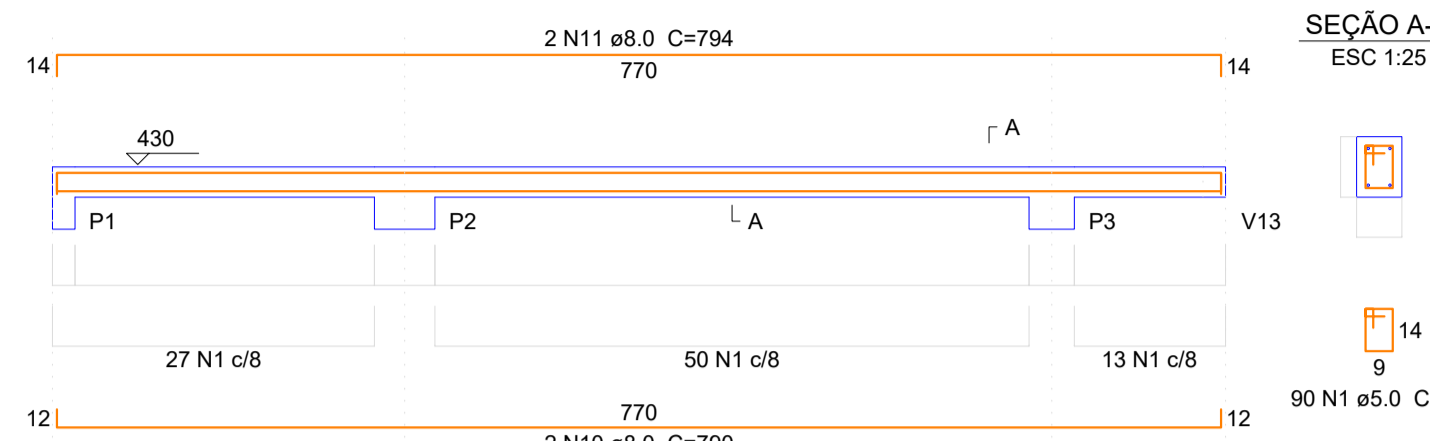


Vigas			
Nome	Seção (cm)	Elevação (cm)	Nível (cm)
V1	15x30	0	330
V2	15x30	0	330
V3	15x30	0	330
V4	15x30	0	330
V5	15x30	0	330
V6	15x30	0	330
V7	15x30	0	330
V8	15x30	0	330
V9	15x30	0	330

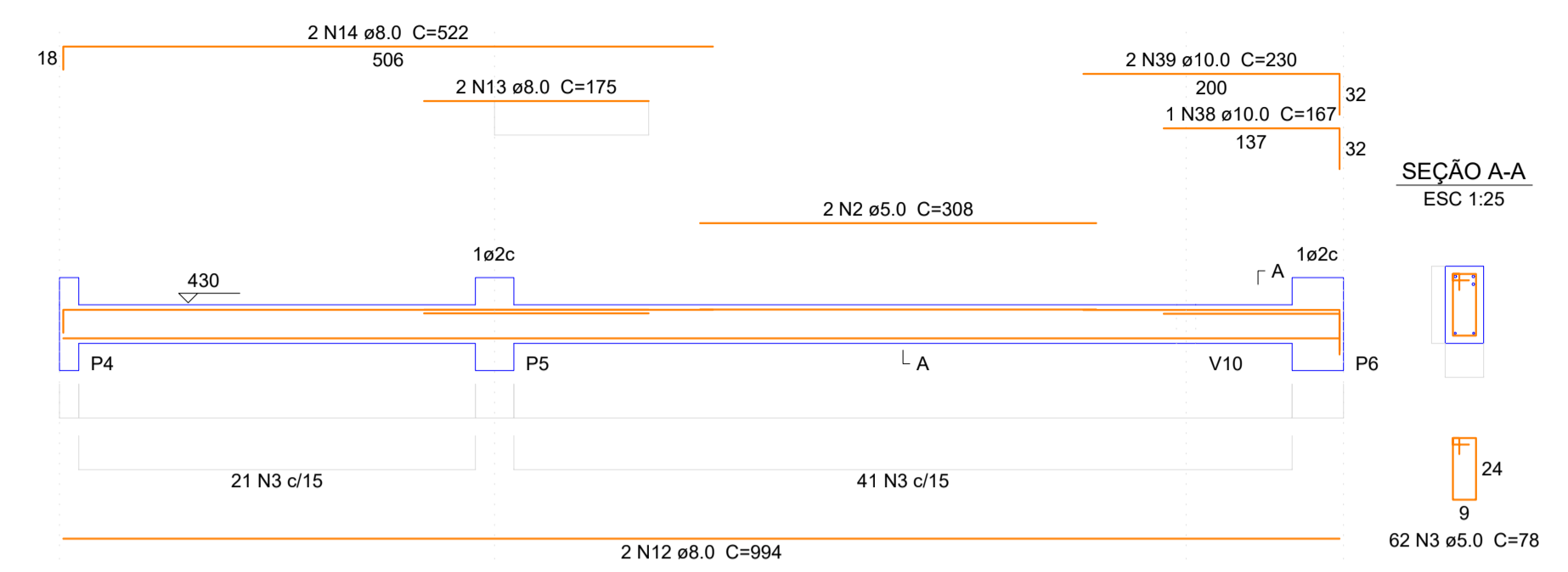
Características dos materiais		
fck (kgf/cm²)	Ecs (kgf/cm²)	
300	260716	

Dimensão máxima do agregado = 19 mm

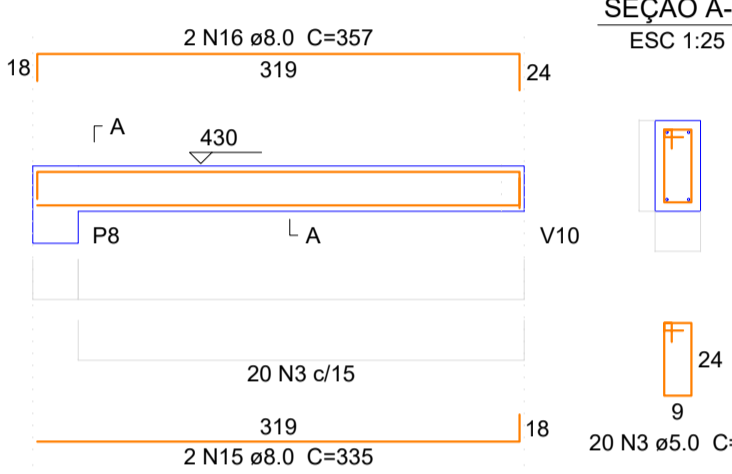
V1



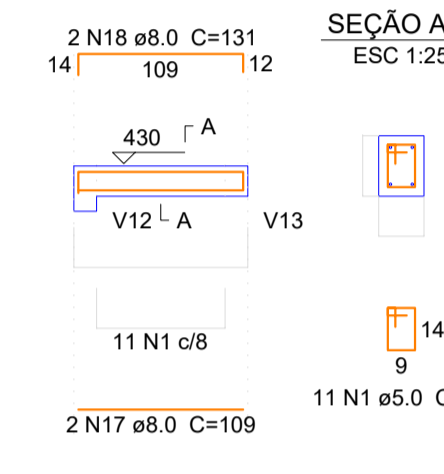
V2



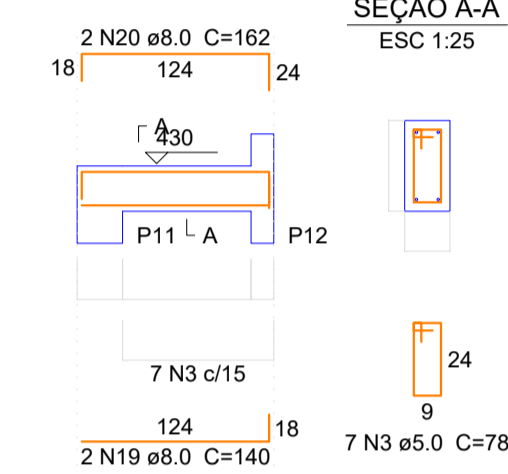
V3



V4



V5

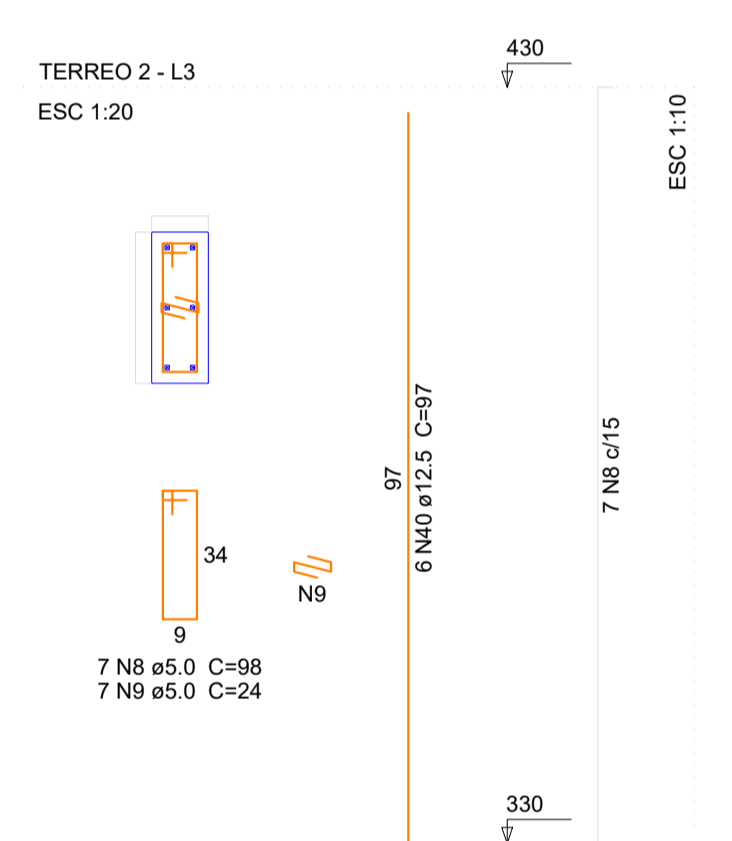


Resumo do aço

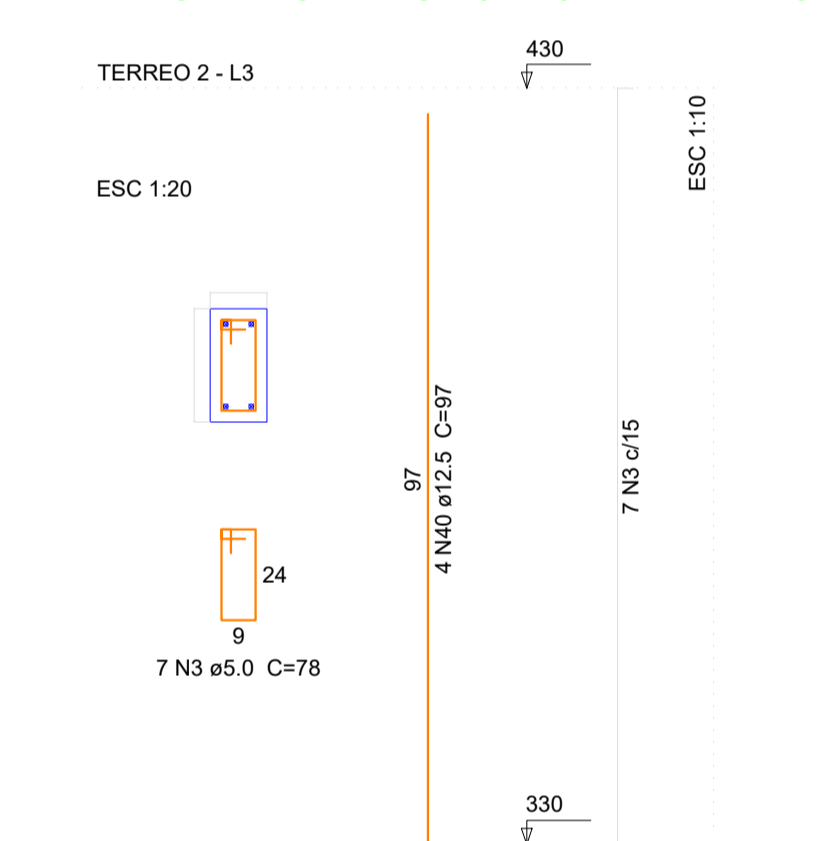
AÇO	DIAM (mm)	C.TOTAL (m)	PESO + 10 % (kg)
CA50	8.0	276.6	120
	10.0	6.3	4.3
	12.5	74.3	78.6
CA60	5.0	1813.4	307.3
PESO TOTAL (kg)			
CA50			202.9
CA60			307.3

Volume de concreto (C-30) = 13.69 m³
Área de forma = 93.62 m²

P2=P6

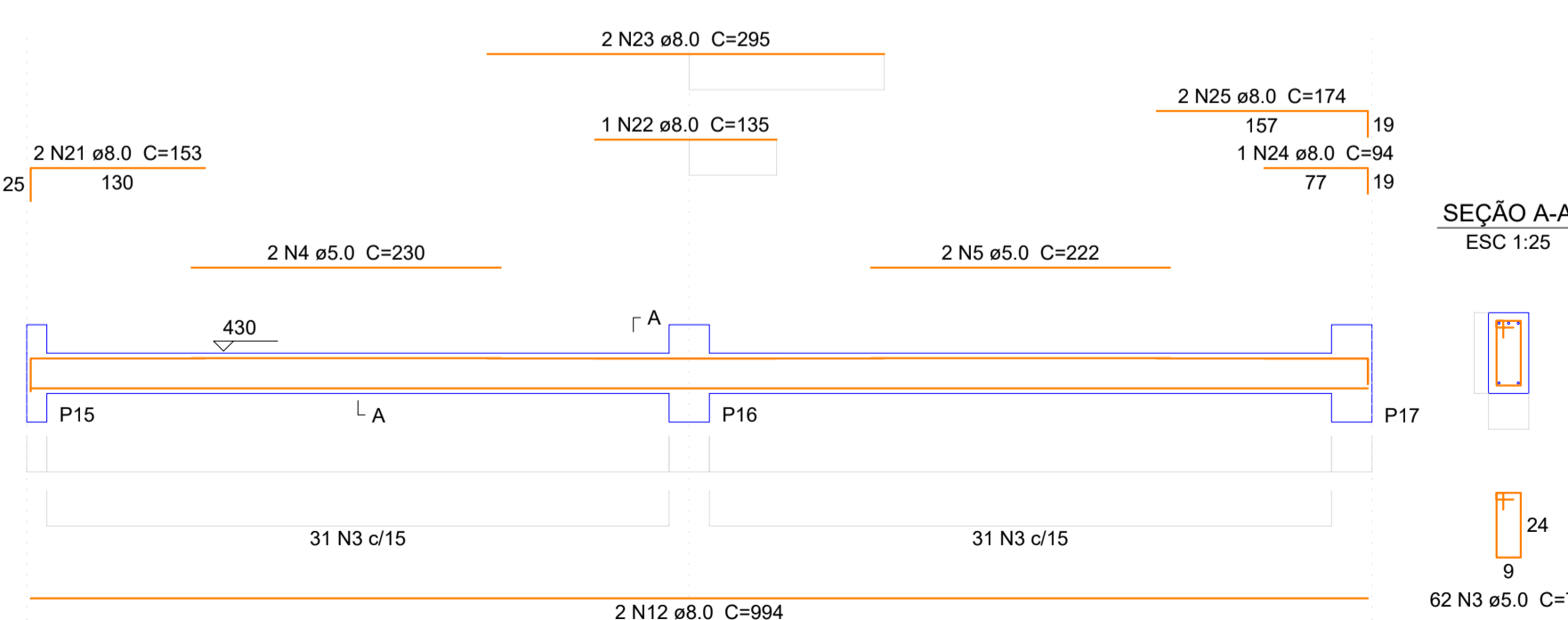


P1=P3=P4=P5=P7=P8=P9=P10=P11=P12=P13=P14=P15=P16=P17

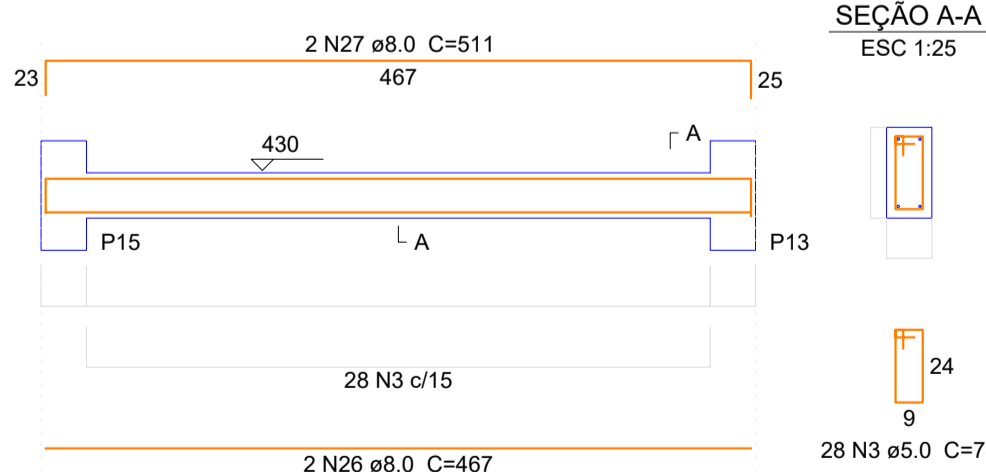


Forma do pavimento Terreo 01
escala 1:50

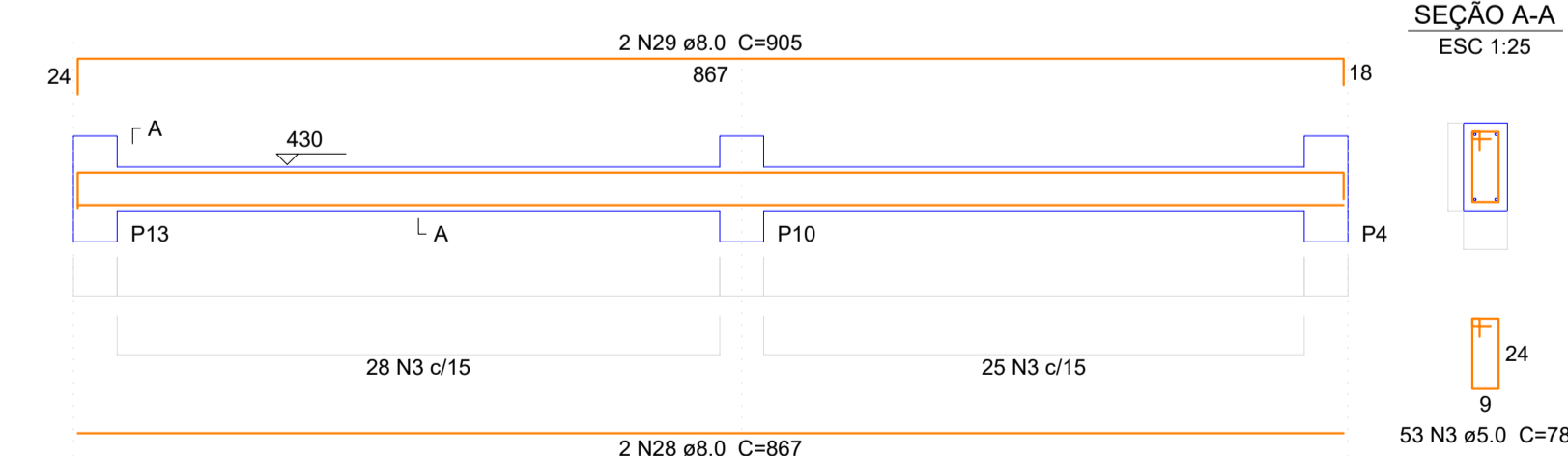
V6



V7



V8



PREF. MUN. DE SÃO CRISTÓVÃO DO SUL

TÍTULO: PROJETO ESTRUTURAL
PRANCHA: ES/04

REFERENCIA: PLANTA FORMA TÉRREO 01
DETALHAMENTOS VIGAS TÉRREO 01
DETALHAMENTOS PILARES TÉRREO 01

PROPRIETÁRIO: PREFEITURA SCS
CPF/CGC: _____

RESPONSÁVEL TÉCNICO: ENG. CIRO FONTANA SURDI
CREA/SC: 063545-0

DESENHO: 01
ESCALA: INDICADA
DATA - REV 02: 30/12/2023

Rua Juvenino França de Moraes, 19
São Cristóvão do Sul
FONE 49 3253-1200