

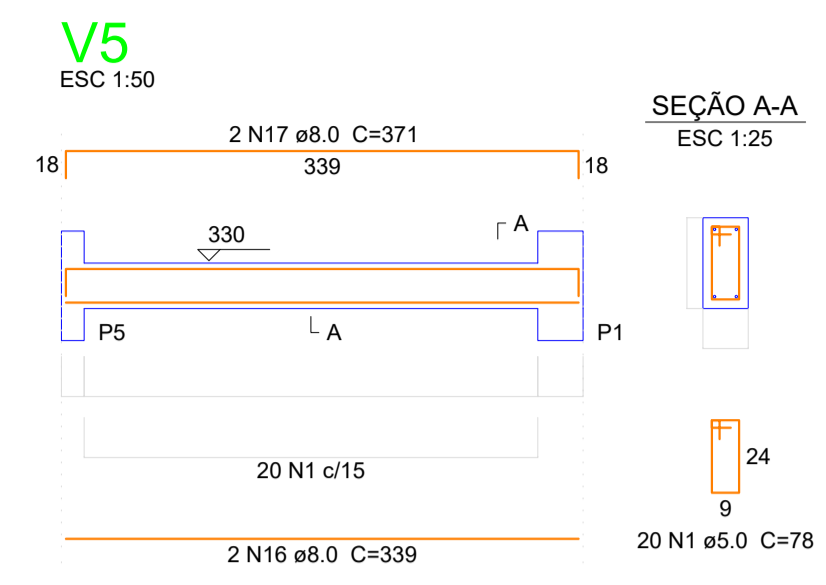
Vigas			
Nome	Seção (cm)	Elevação (cm)	Nível (cm)
V1	15x40	0	30
V2	15x40	-5	25
V3	15x40	0	30
V4	20x40	0	30
V6	15x40	0	30
V7	15x40	-5	25
V8	15x40	0	30
V9	15x40	0	30
V10	15x40	0	30
V11	15x40	0	30
V12	15x40	0	30
V13	15x40	0	30
V14	15x40	0	30
V15	15x40	0	30
V16	15x40	0	30
V17	15x40	-5	25
V18	15x40	0	30
V19	15x40	-5	25

Características dos materiais		
fck	Ecs	
(kgf/cm²)	(kgf/cm²)	
300	260716	

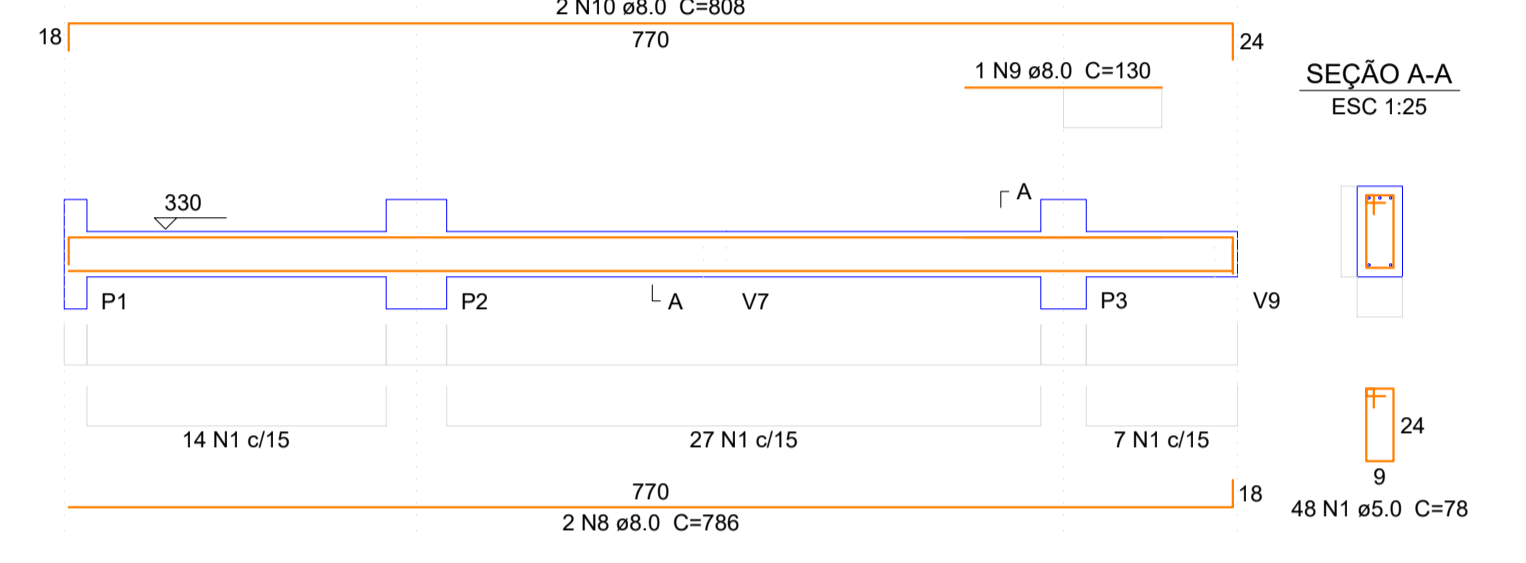
Dimensão máxima do agregado = 19 mm

Resumo do aço			
AÇO	DIAM (mm)	C.TOTAL (m)	PESO + 10 % (kg)
CA50	8.0	235.7	103.1
	10.0	40.1	27.2
	12.5	237.8	251.9
CA60	5.0	633.7	107.4
PESO TOTAL (kg)			
CA50			382.2
CA60			107.4

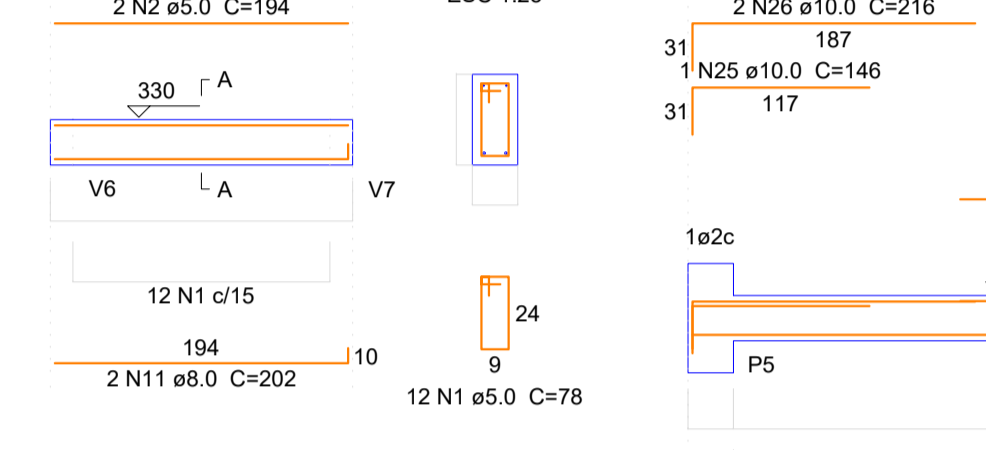
Volume de concreto (C-30) = 5,35 m³
Área de forma = 96,30 m²



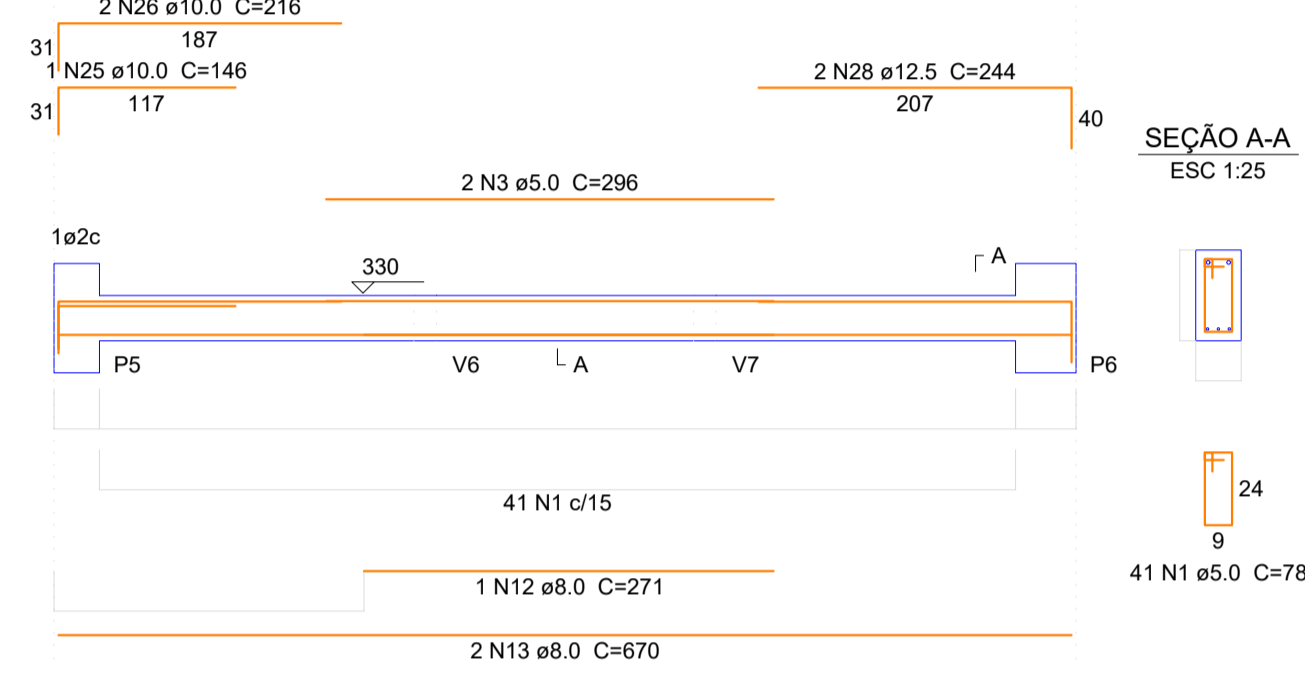
V1 ESC 1:50



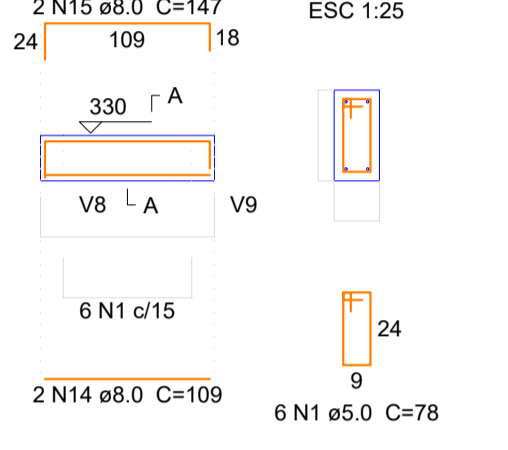
V2 ESC 1:50



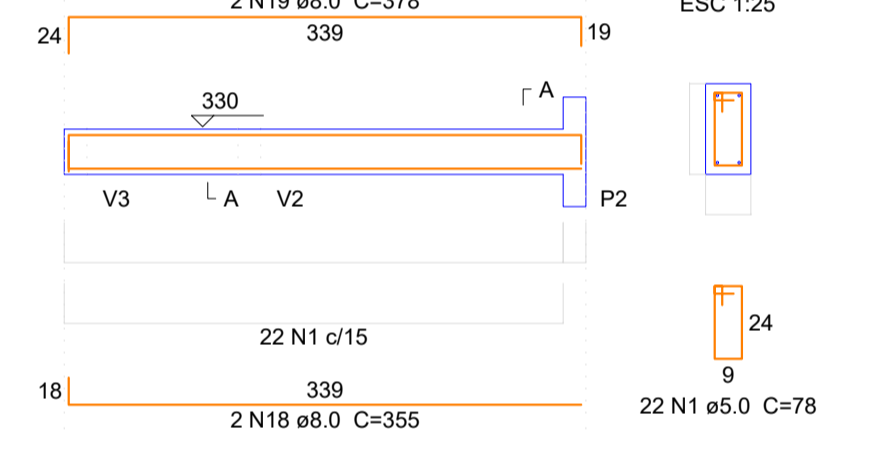
V3 ESC 1:50



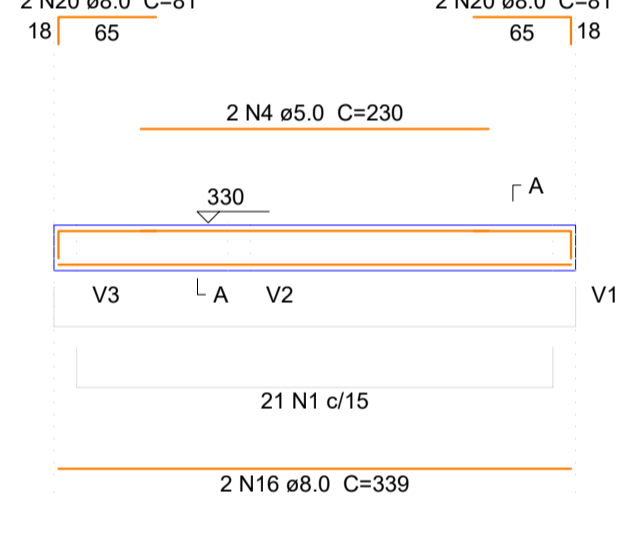
V4 ESC 1:50



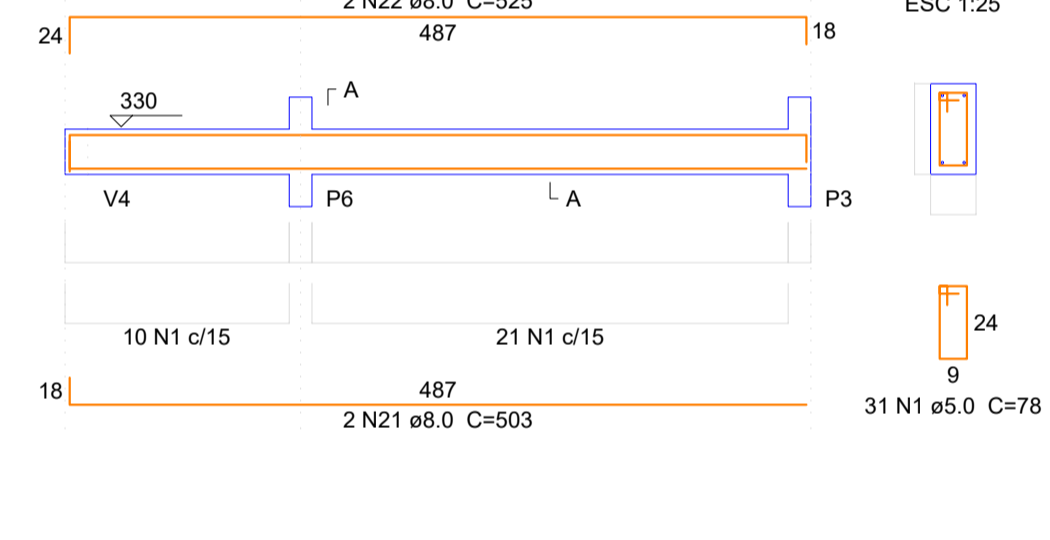
V6 ESC 1:50



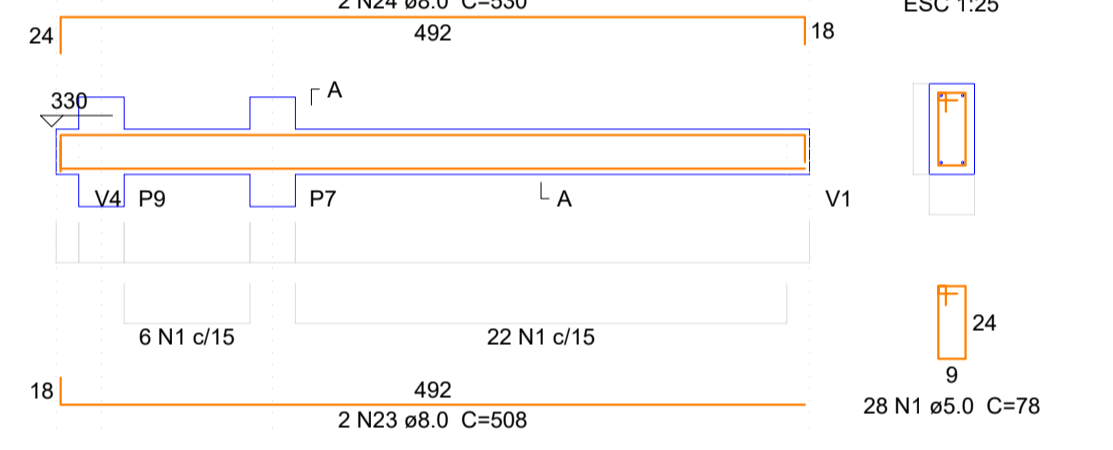
V7 ESC 1:50



V8 ESC 1:50

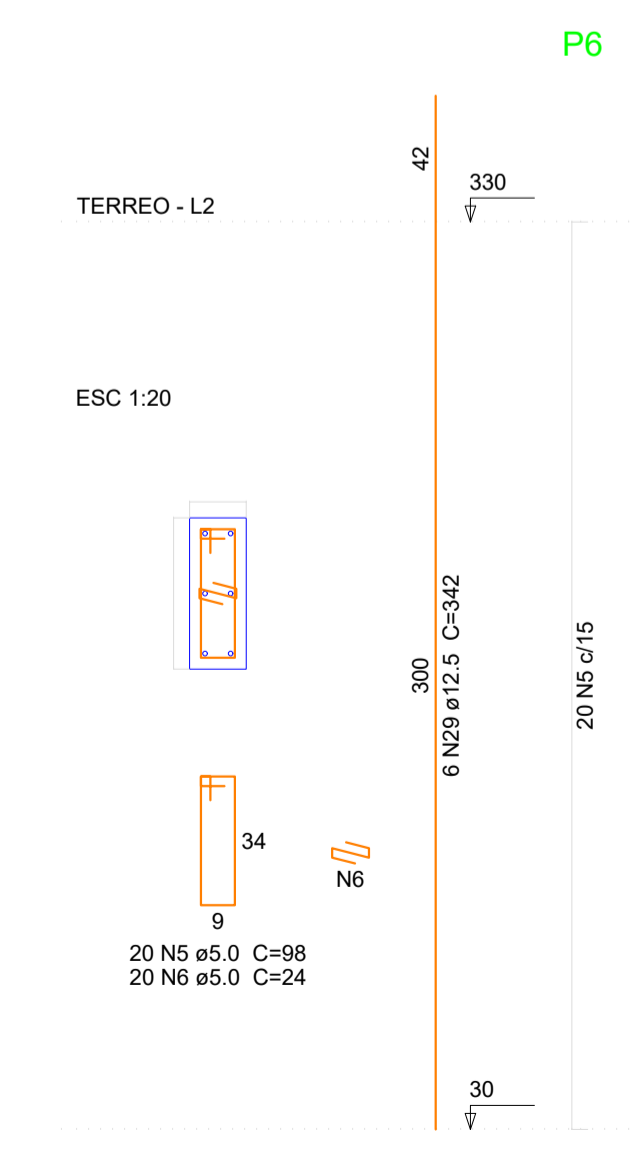
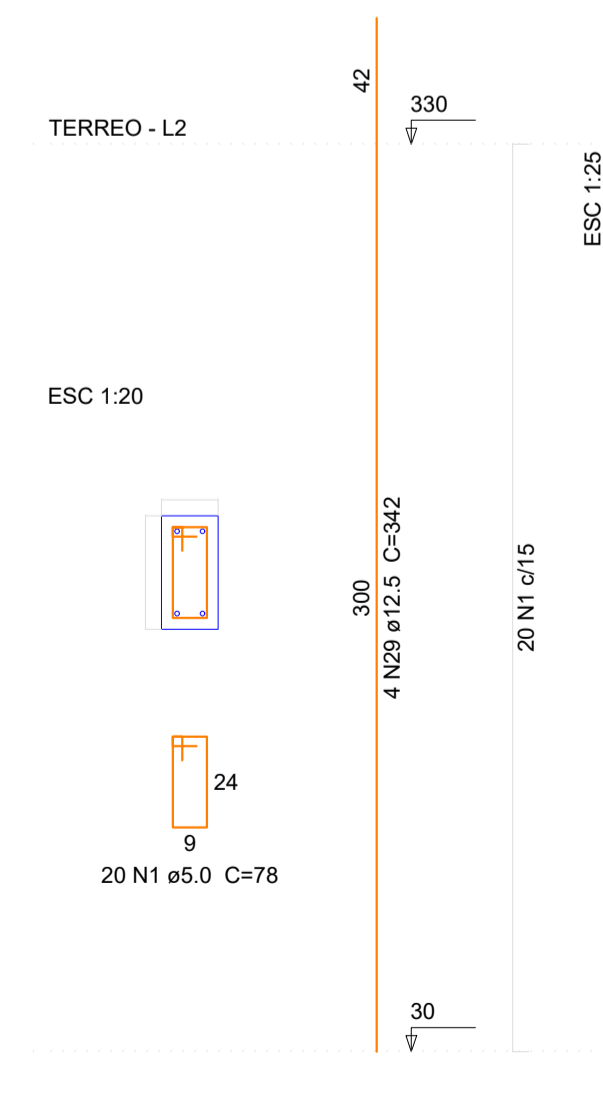
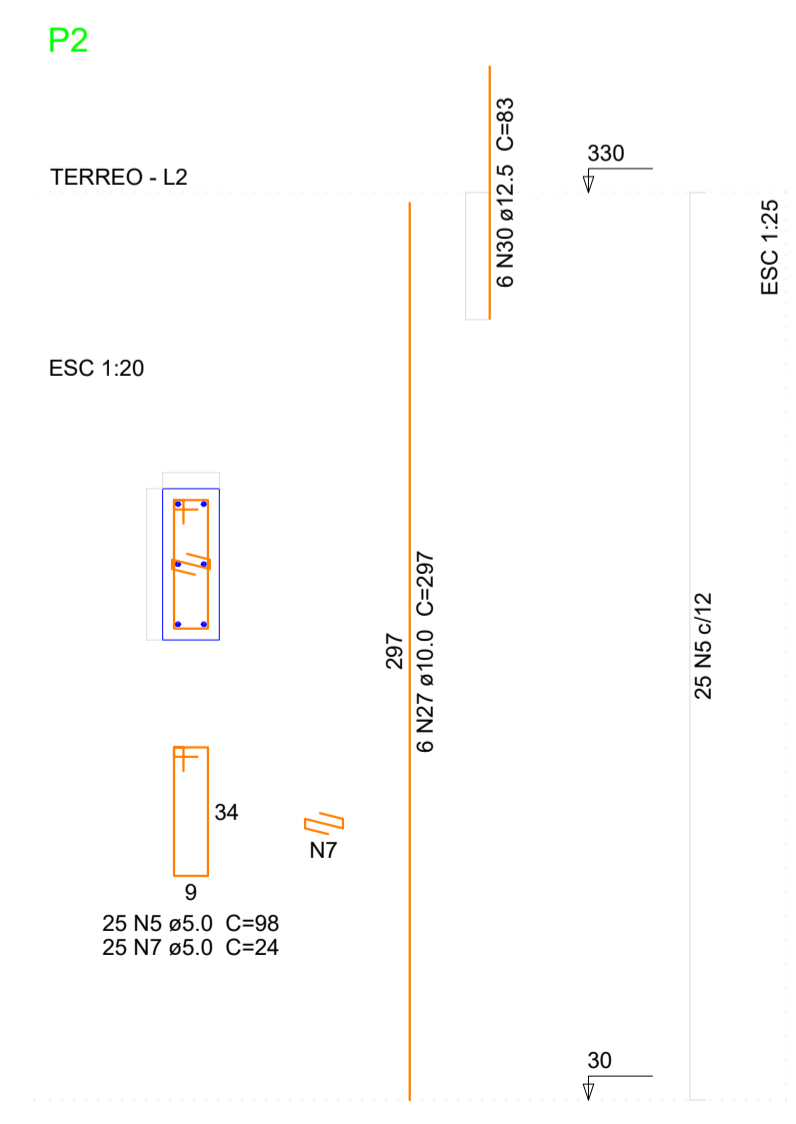


V9 ESC 1:50



Forma do pavimento Fundação escala 1:50

P1=P3=P4=P5=P7=P8=P9=P10=P11=P12=P13=P14=P15=P17



PREF. MUN. DE SÃO CRISTÓVÃO DO SUL		
	TÍTULO PROJETO ESTRUTURAL	PRANCHA ES/03
	REFERÊNCIA PLANTA FORMA BALDRAME DETALHAMENTOS VIGAS TÉRREO DETALHAMENTOS PILARES TÉRREO	
PROPRIETÁRIO PREFEITURA SCS CPF/CGC	ASSINATURA	
RESPONSÁVEL TÉCNICO ENG. CIRO FONTANA SURDI CREA/SC 063545-0	PREFEITURA	
DESENHO 01	ESCALA INDICADA DATA - REV 02 30/12/2023	PREFEITURA