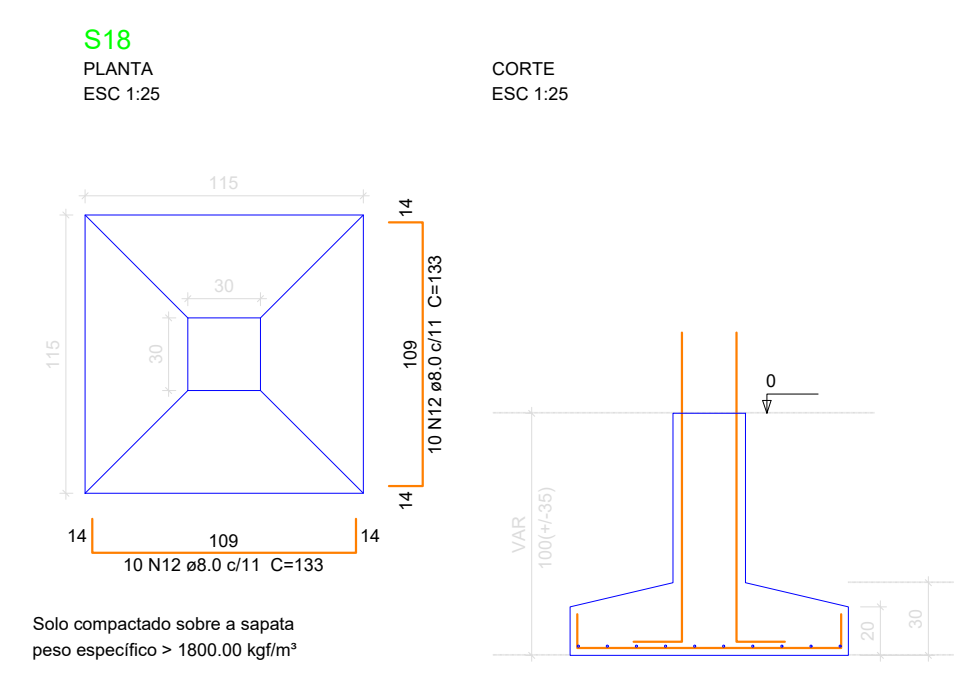
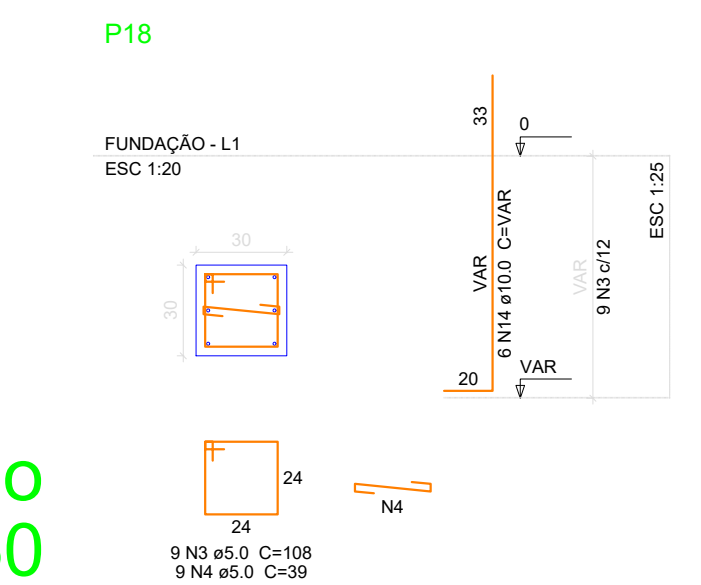
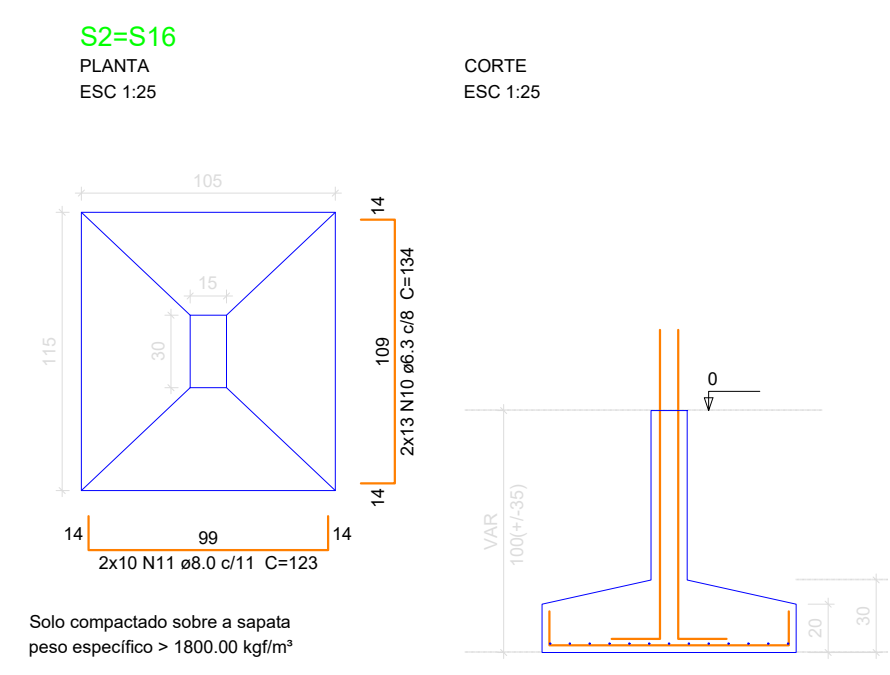
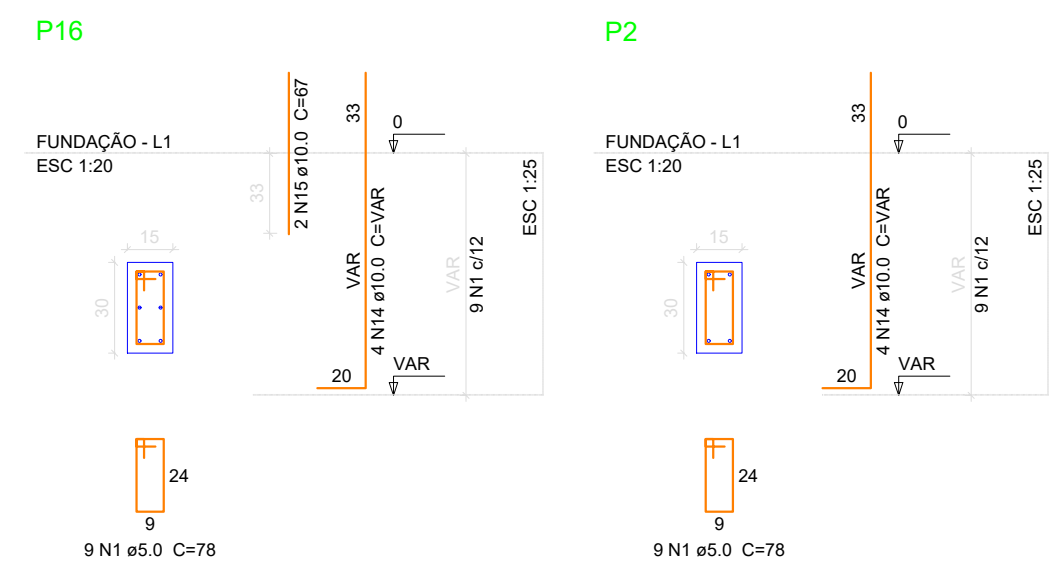
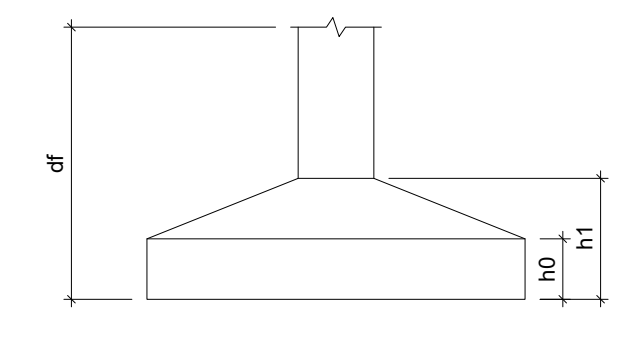


Planta de locação escala 1:50

Nome	Seção (cm)	X (cm)	Y (cm)	Pilar				Fundação						
				Carga Máx. (tf)	Carga Min. (tf)	Mx (kgf.m)	My (kgf.m)	Fx (tf)	Fy (tf)	Lado B (cm)	Lado H (cm)	h0 / ha (cm)	h1 / hb (cm)	df (cm)
P1	15x30	7.50	-15.00	6.2	4.9	400	100	0.1	0.4	70	85	25	25	100
P2	15x30	322.50	-15.00	15.8	12.7	300	100	0.1	0.3	105	115	20	30	100
P3	30x30	835.00	-15.00	12.7	10.1	500	600	0.5	0.4	105	105	25	25	100
P4	15x30	1082.50	-15.00	6.3	5.1	300	100	0.1	0.2	70	85	25	25	100
P5	15x30	1439.50	-7.50	10.2	8.2	100	300	0.2	0.1	85	100	25	25	100
P6	15x30	1722.50	-15.00	7.3	5.7	300	100	0.1	0.2	70	85	25	25	100
P7	15x30	1040.00	-172.50	10.5	7.8	500	400	0.4	0.6	90	105	25	25	100
P8	15x30	1439.50	-172.50	10.3	7.5	100	400	0.4	0.1	85	100	25	25	100
P9	15x30	7.50	-337.75	8.2	6.5	200	100	0.1	0.1	70	85	25	25	100
P10	15x30	322.50	-337.75	18.9	12.5	200	500	0.5	0.1	115	130	20	35	100
P11	20x30	1720.00	-315.15	7.8	6.1	200	100	0.1	0.1	70	85	25	25	100
P12	30x30	835.00	-455.00	14.5	9.4	400	400	0.5	0.2	105	105	25	25	100
P13	15x30	7.50	-667.50	7.8	6.2	200	100	0.1	0.2	70	85	25	25	100
P14	15x30	322.50	-667.50	19.1	12.6	300	500	0.5	0.2	115	130	20	35	100
P15	15x30	1040.00	-637.80	11.1	8.2	500	300	0.2	0.5	90	105	25	25	100
P16	15x30	1314.70	-637.80	14.9	11.2	500	500	0.5	0.5	105	115	20	30	100
P17	15x30	1715.00	-637.80	10.4	8.1	100	600	0.6	0.1	90	105	25	25	100
P18	30x30	835.00	-895.00	16.0	10.5	600	400	0.5	0.5	115	115	20	30	100
P19	15x30	7.50	-990.00	7.1	5.0	500	300	0.5	0.8	75	90	25	25	120
P20	15x30	315.00	-997.50	16.7	10.2	300	1900	4.1	0.6	120	135	20	35	120
P21	15x30	1090.00	-1012.50	11.1	8.0	300	900	1.8	0.3	95	110	20	30	120
P22	15x30	1320.00	-1020.00	25.7	18.1	1200	500	1.1	1.8	135	150	20	40	120
P23	15x30	1715.00	-1012.50	20.3	14.6	300	1600	3.6	0.5	125	140	20	40	120
P24	15x30	15.00	-1342.50	2.3	1.2	200	600	0.9	0.3	75	90	25	25	120
P25	15x30	315.00	-1342.50	6.5	3.6	200	900	1.7	0.2	80	95	25	25	120
P26	30x30	835.00	-1335.00	10.1	6.5	1100	1200	2.3	2.0	110	110	20	30	120
P27	15x30	1082.50	-1335.00	5.1	3.8	600	200	0.3	0.9	75	90	25	25	120
P28	15x30	1327.50	-1342.50	17.8	12.3	400	800	1.6	0.8	120	135	20	35	120
P29	15x30	1722.50	-1335.00	12.0	8.0	600	500	1.1	0.8	95	110	20	30	120



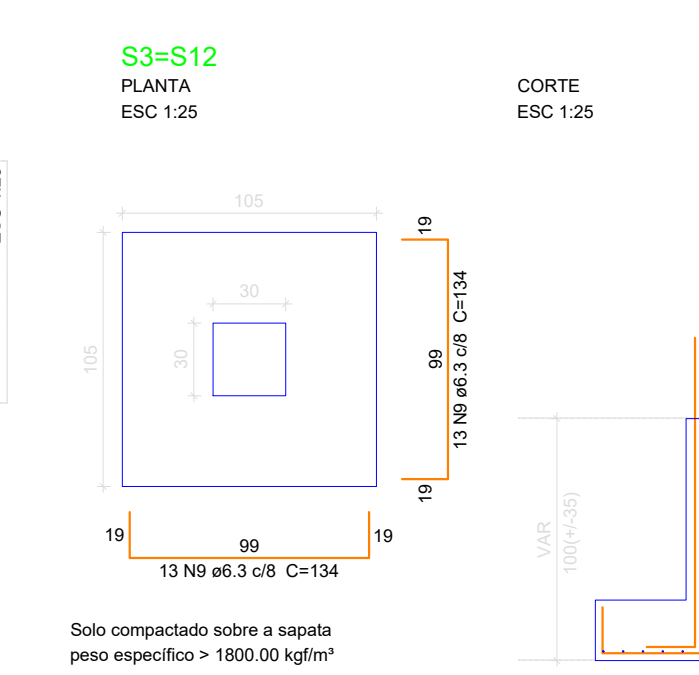
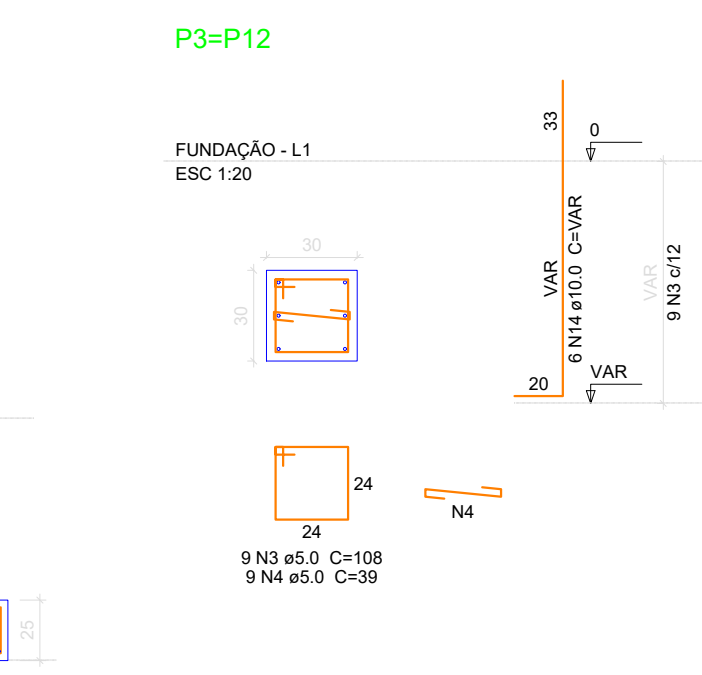
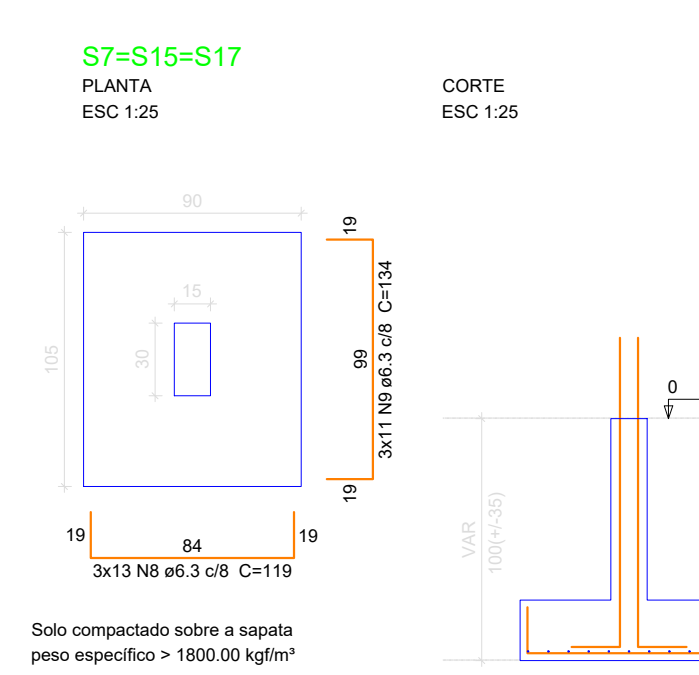
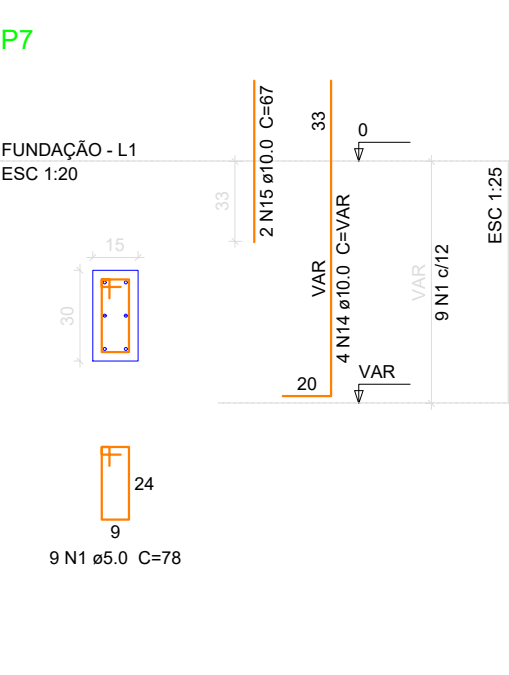
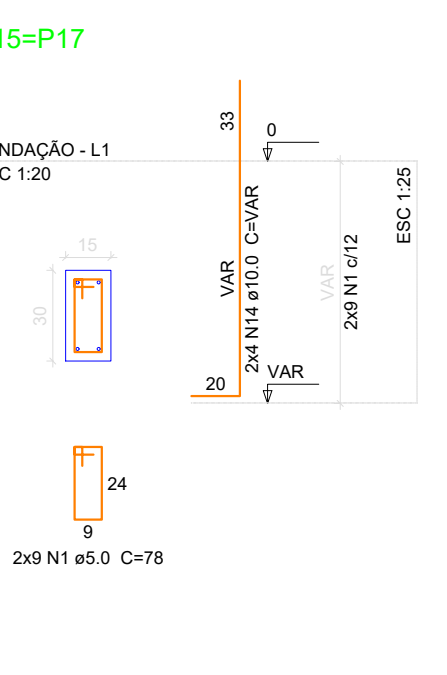
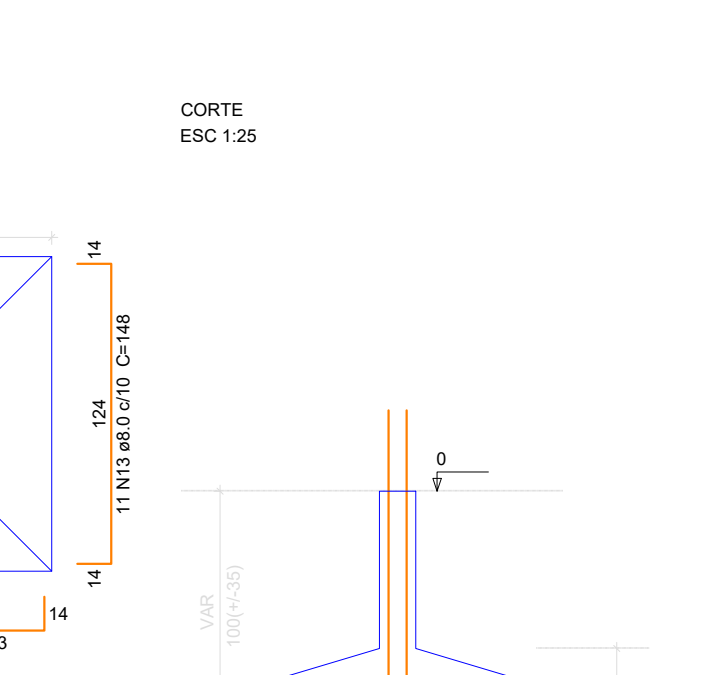
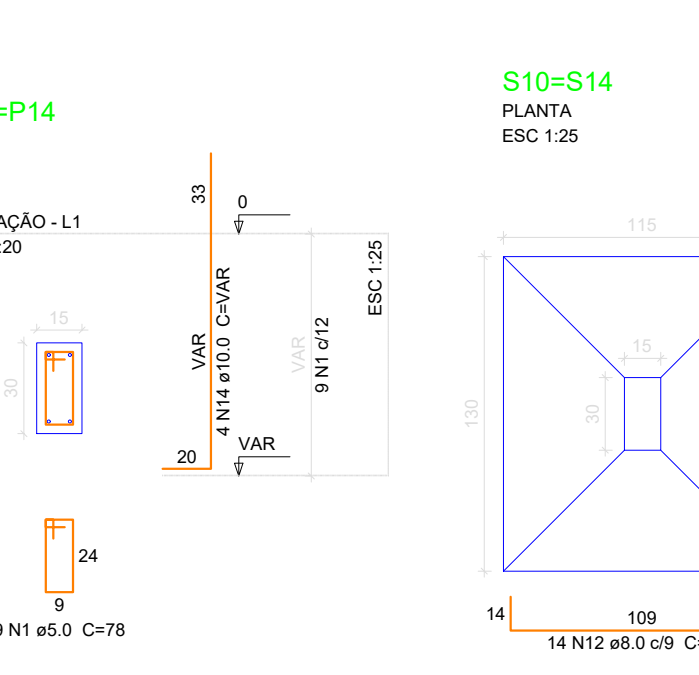
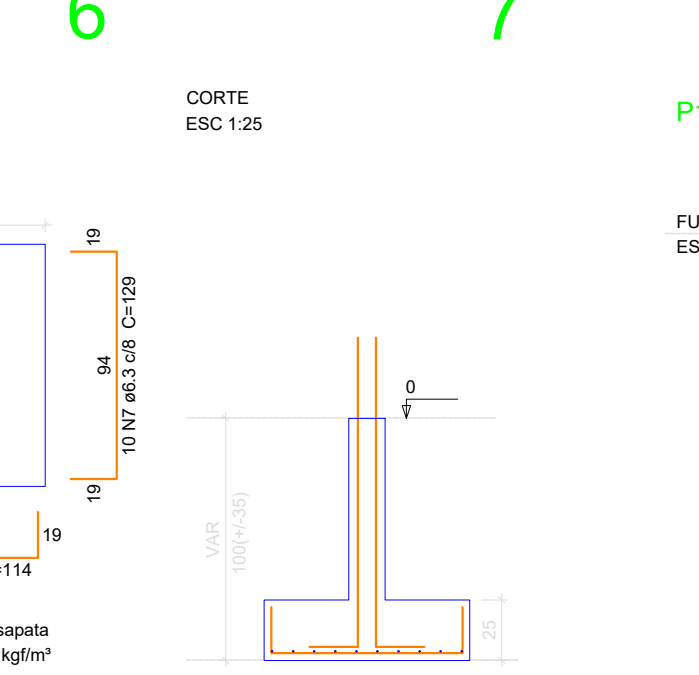
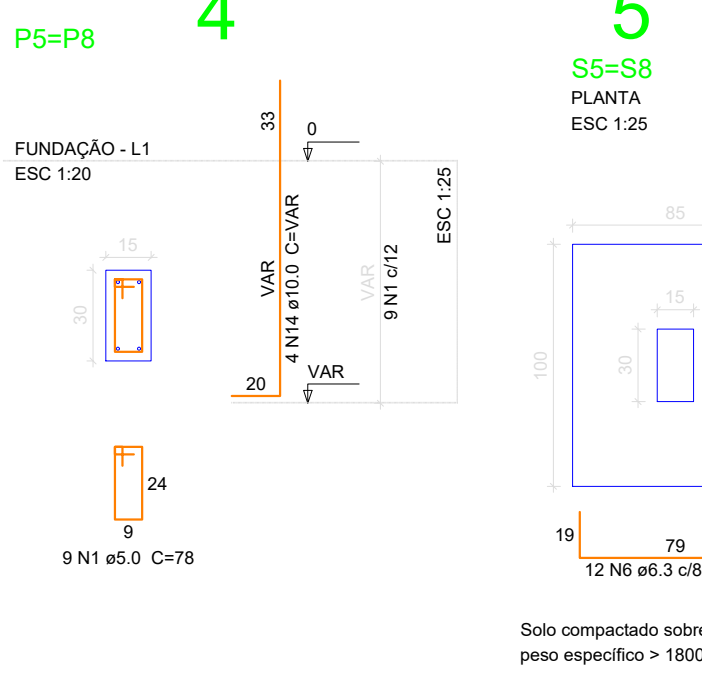
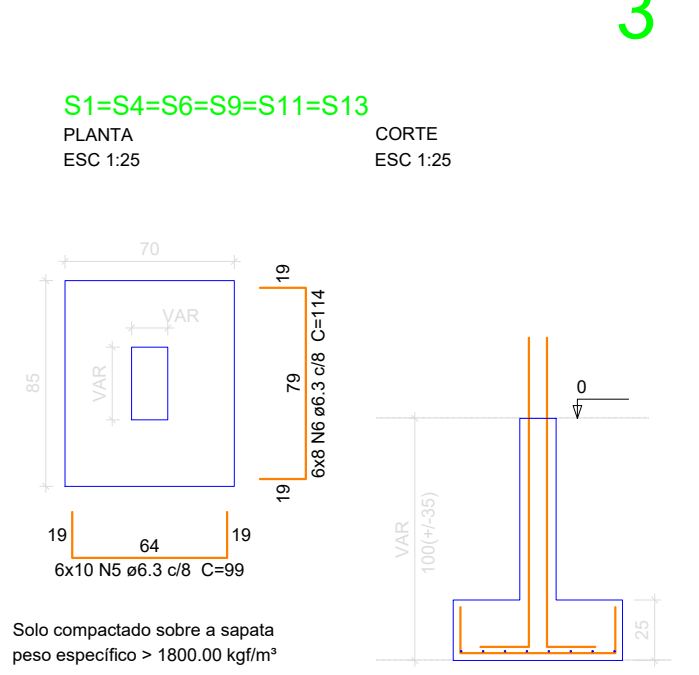
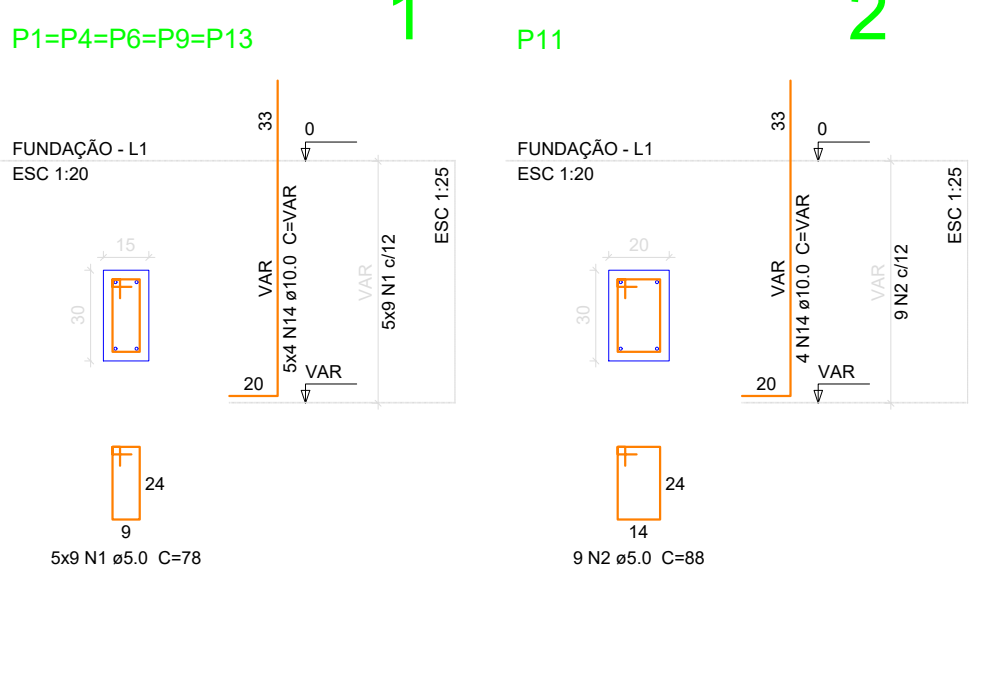
Relação do aço

ACO	N	DIAM (mm)	QUANT (Barras)	UNIT (cm)	C.TOTAL (cm)
CA00	1	5.0	126	78	9828
CA00	2	5.0	9	88	792
CA00	3	5.0	27	108	2916
CA00	4	5.0	27	99	1553
CA50	5	6.3	60	99	5940
CA50	6	6.3	72	114	8208
CA50	7	6.3	20	129	2580
CA50	8	6.3	39	119	4641
CA50	9	6.3	85	134	11390
CA50	10	6.3	26	134	3464
CA50	11	8.0	20	123	2460
CA50	12	8.0	48	133	6384
CA50	13	8.0	22	148	3256
CA50	14	10.0	78	148	11424
CA50	15	10.0	4	67	268

Resumo do aço

ACO	DIAM (mm)	C.TOTAL (m)	PESO + 10% (kg)
CA50	6.3	362.5	97.6
CA50	8.0	121	52.5
CA50	10.0	118.2	80.1
CA50	5.0	145.9	24.7
CA50	230.2		24.7

Volume de concreto (C-30) = 5.22 m³
Área de forma = 33.37 m²



PREF. MUN. DE SÃO CRISTÓVÃO DO SUL

PROJETO AMPLIAÇÃO ETAPA 02 NÚCLEO EDUCACIONAL MEU POSTINHO

PROJ. ESTRUTURAL - PAV FUNDAÇÃO PLANTA LOCAÇÃO, DETALHES SAPATAS

MUNICÍPIO DE SÃO CRISTÓVÃO DO SUL

ENG. CIRO FONTANA SURDI

234,22m²

INDICADA

14/03/2023