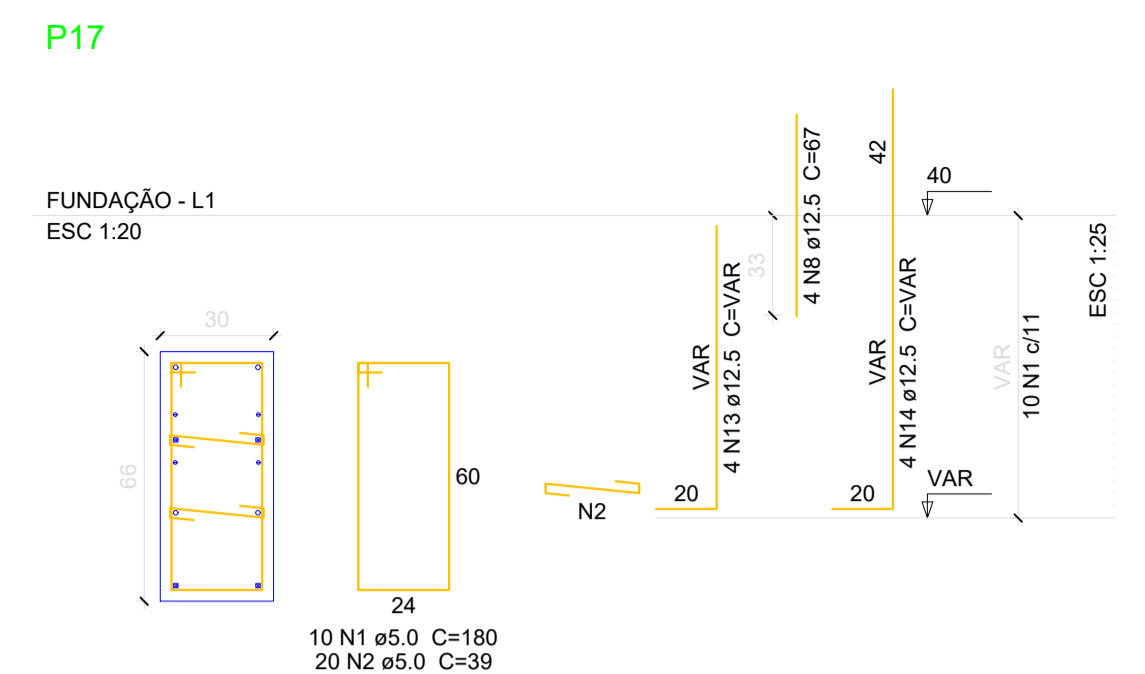
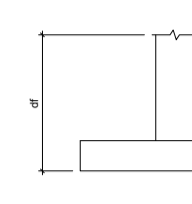
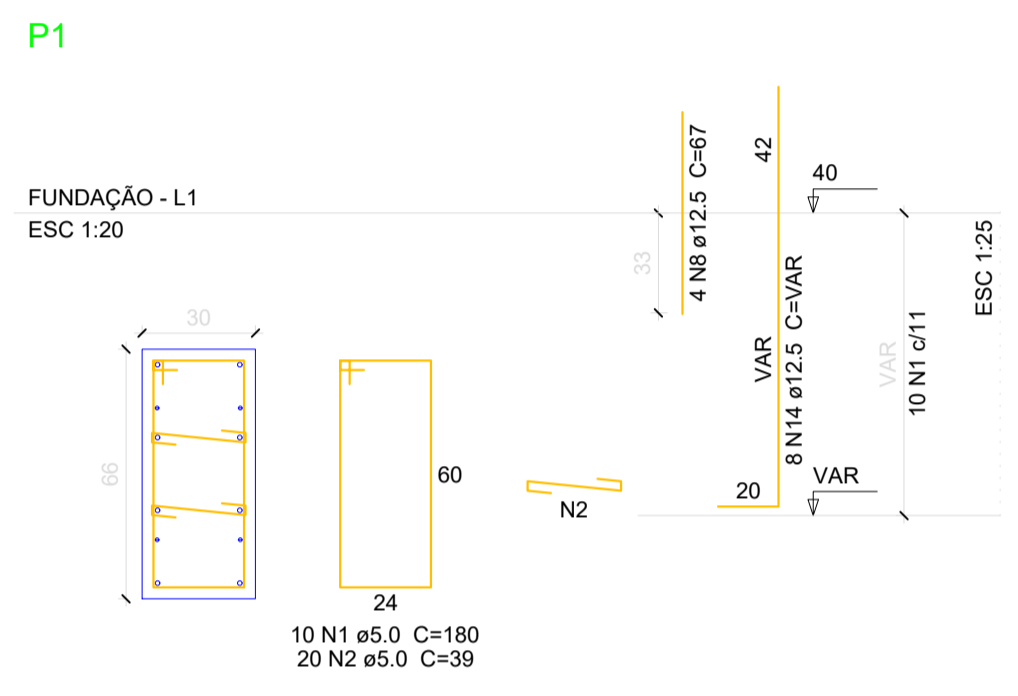
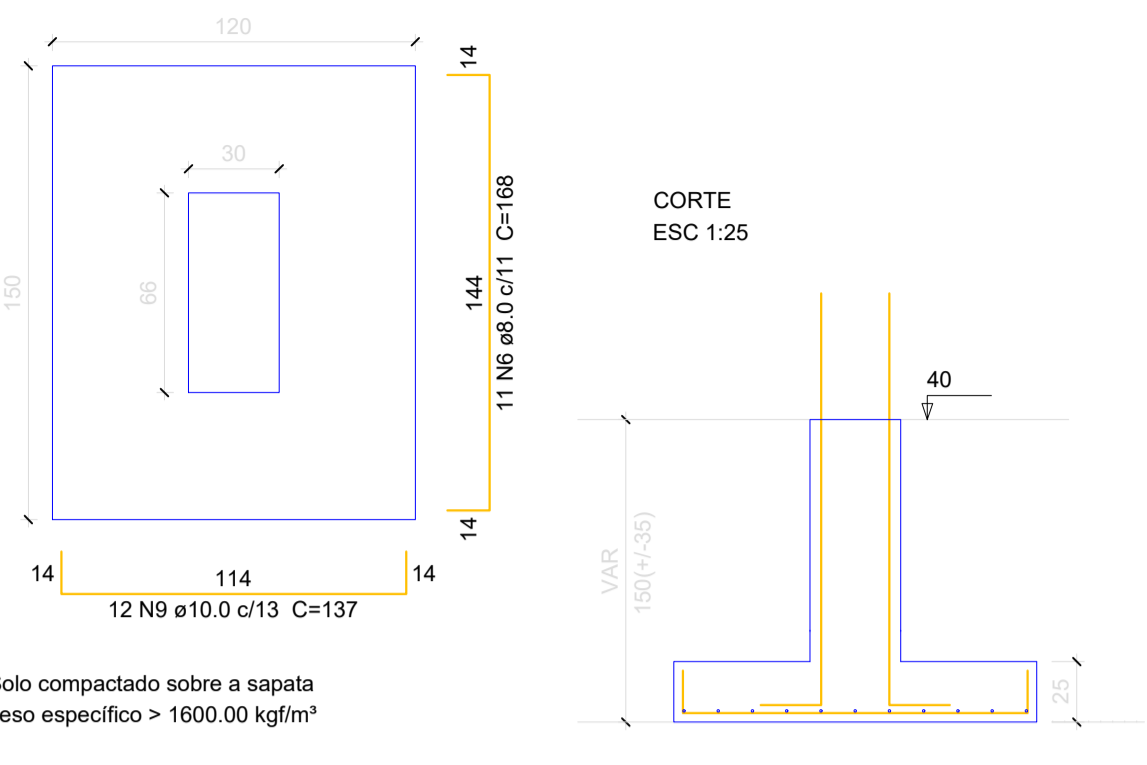


Planta de locação escala 1:100

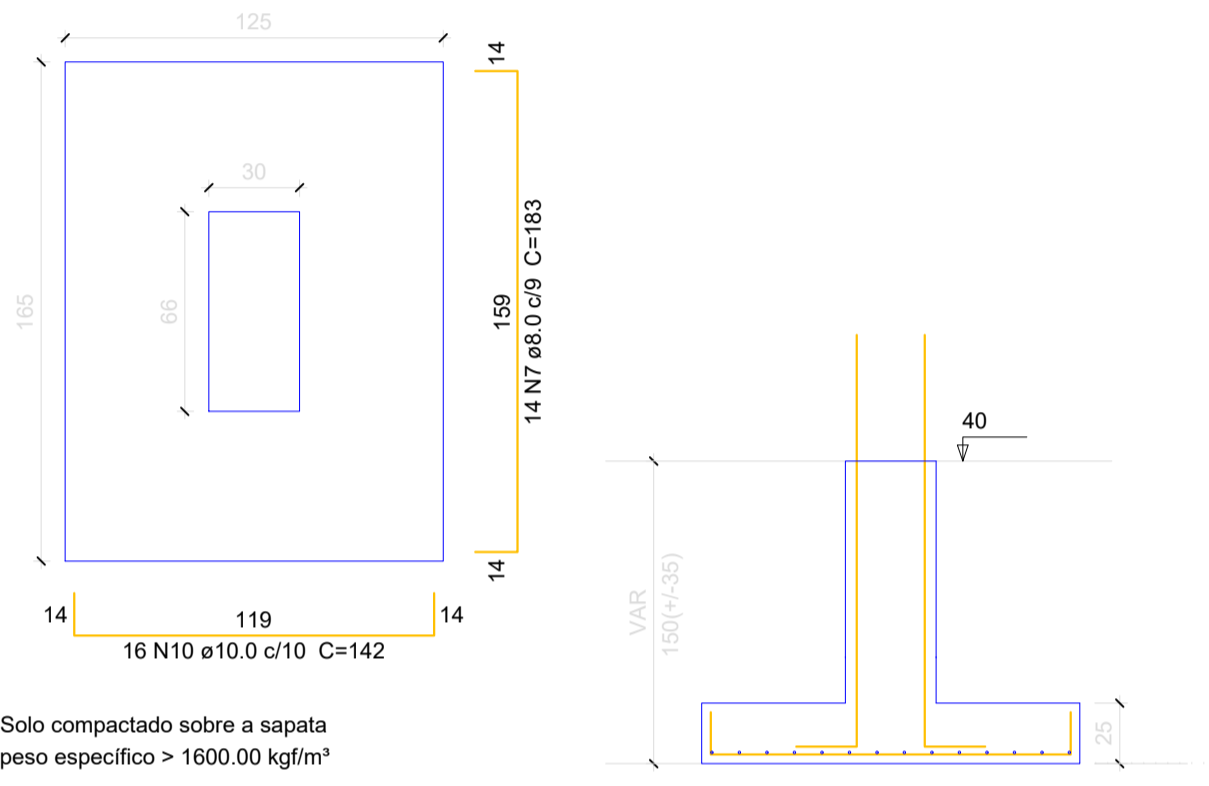
Nome	Seção	X (mm)	Y (mm)	Compr. Máx. (mm)	Área (mm²)	Vol. (m³)	Perímetro (m)	Área (m²)	Vol. (m³)	Perímetro (m)	Área (m²)	Vol. (m³)
P1	20x40	1000	4000	4000	80000	3.2	120	1.2	120	1.2	120	1.2
P2	20x40	1000	4000	4000	80000	3.2	120	1.2	120	1.2	120	1.2
P3	20x40	1000	4000	4000	80000	3.2	120	1.2	120	1.2	120	1.2
P4	20x40	1000	4000	4000	80000	3.2	120	1.2	120	1.2	120	1.2
P5	20x40	1000	4000	4000	80000	3.2	120	1.2	120	1.2	120	1.2
P6	20x40	1000	4000	4000	80000	3.2	120	1.2	120	1.2	120	1.2
P7	20x40	1000	4000	4000	80000	3.2	120	1.2	120	1.2	120	1.2
P8	20x40	1000	4000	4000	80000	3.2	120	1.2	120	1.2	120	1.2
P9	20x40	1000	4000	4000	80000	3.2	120	1.2	120	1.2	120	1.2
P10	20x40	1000	4000	4000	80000	3.2	120	1.2	120	1.2	120	1.2
P11	20x40	1000	4000	4000	80000	3.2	120	1.2	120	1.2	120	1.2
P12	20x40	1000	4000	4000	80000	3.2	120	1.2	120	1.2	120	1.2
P13	20x40	1000	4000	4000	80000	3.2	120	1.2	120	1.2	120	1.2
P14	20x40	1000	4000	4000	80000	3.2	120	1.2	120	1.2	120	1.2



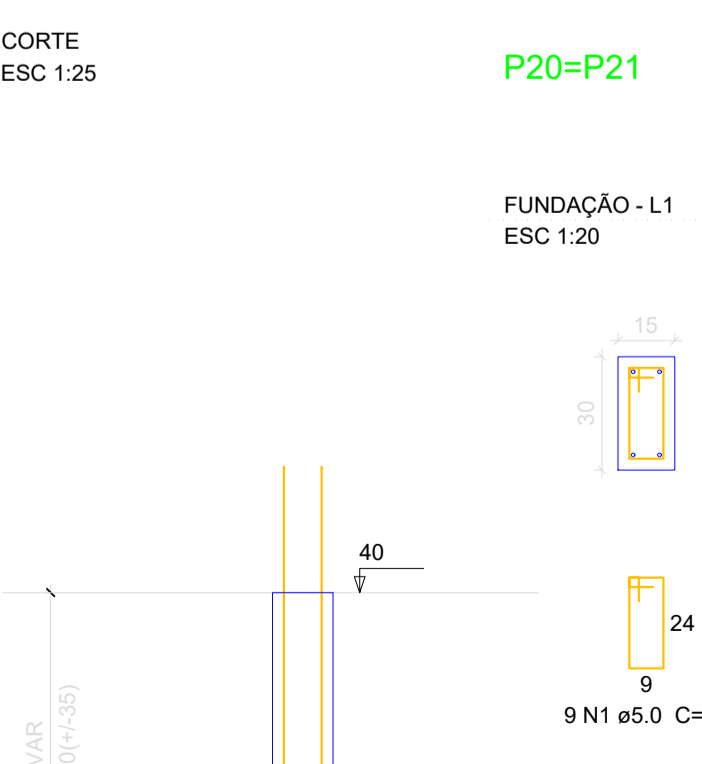
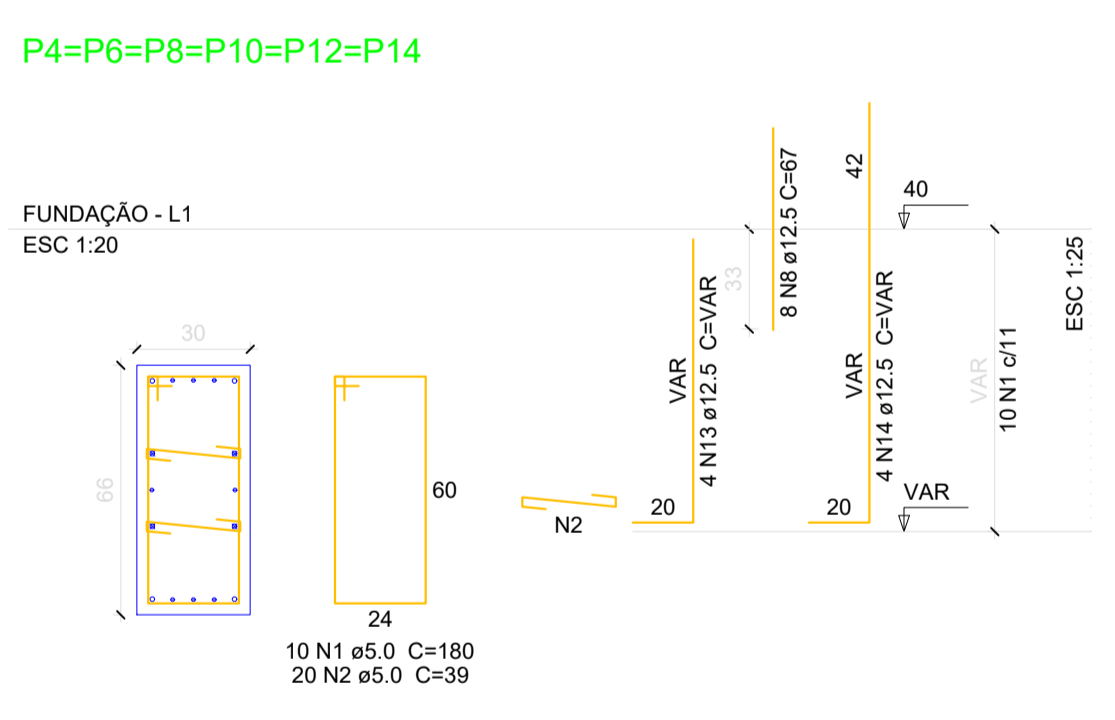
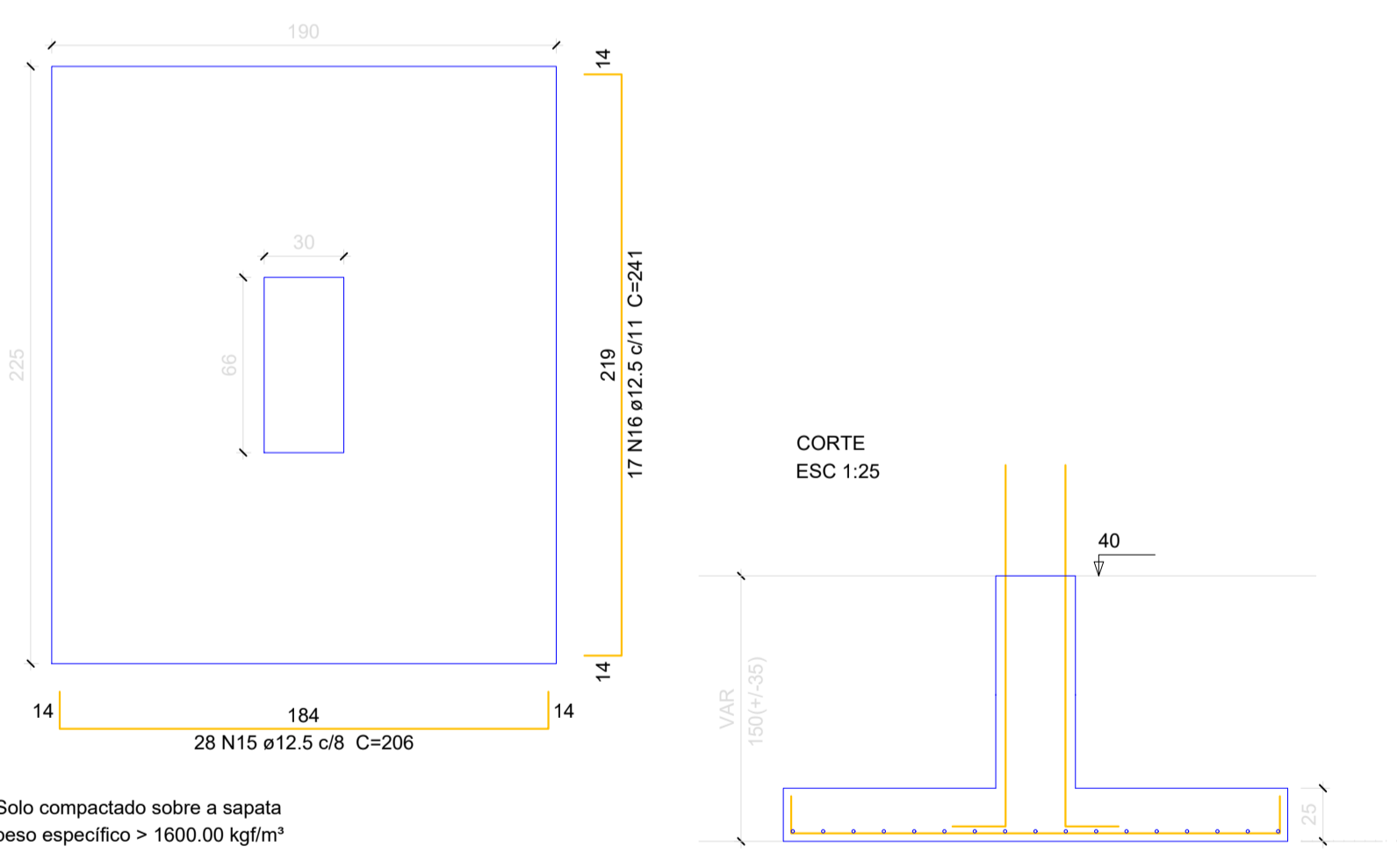
S17
PLANTA
ESC 1:25



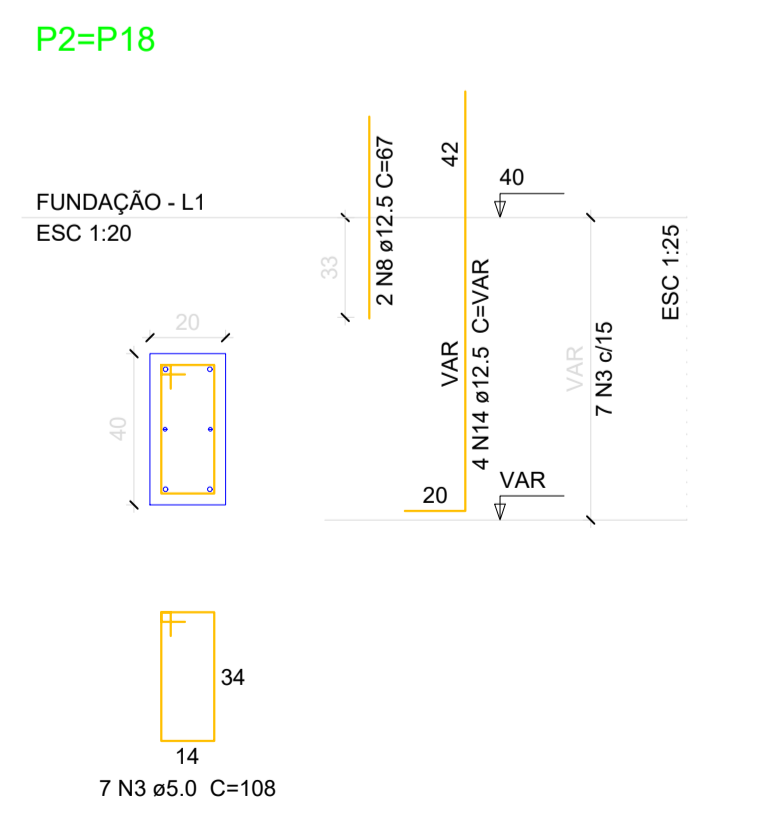
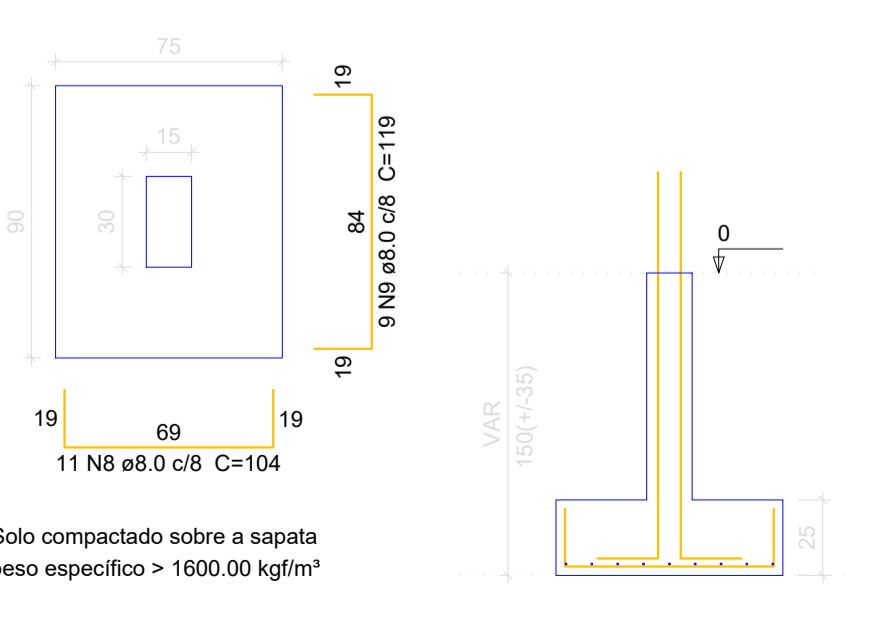
S1
PLANTA
ESC 1:25



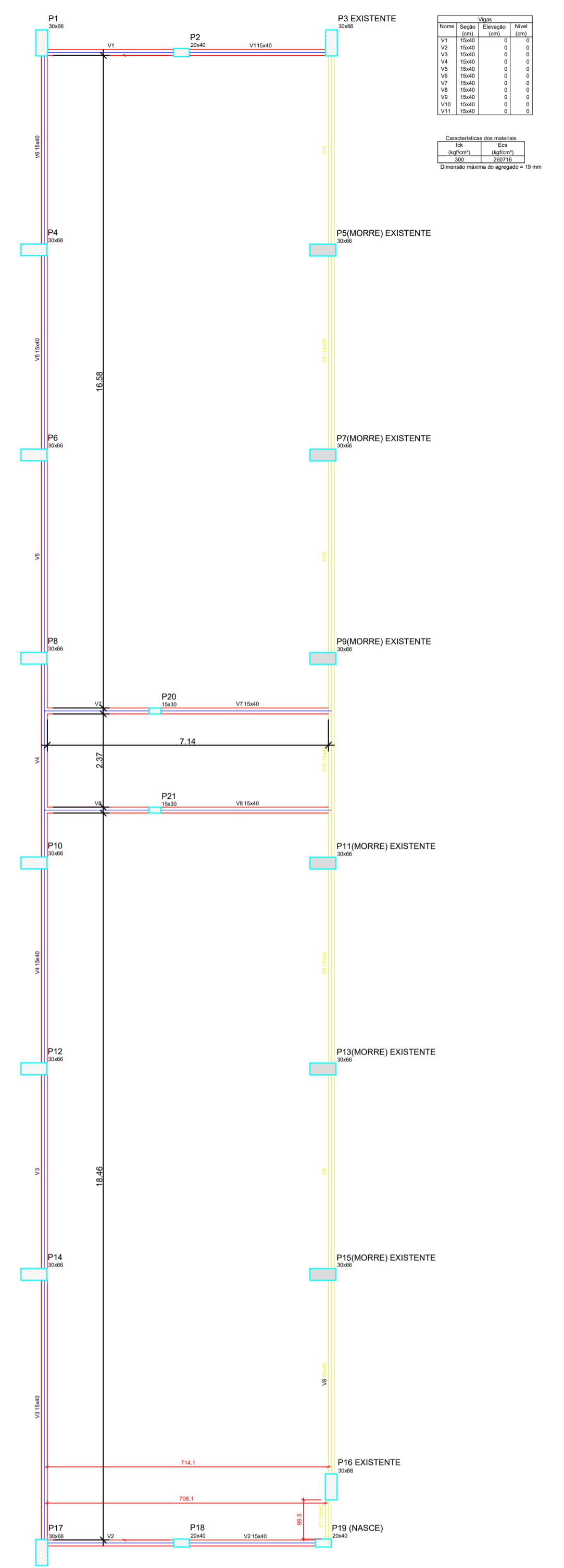
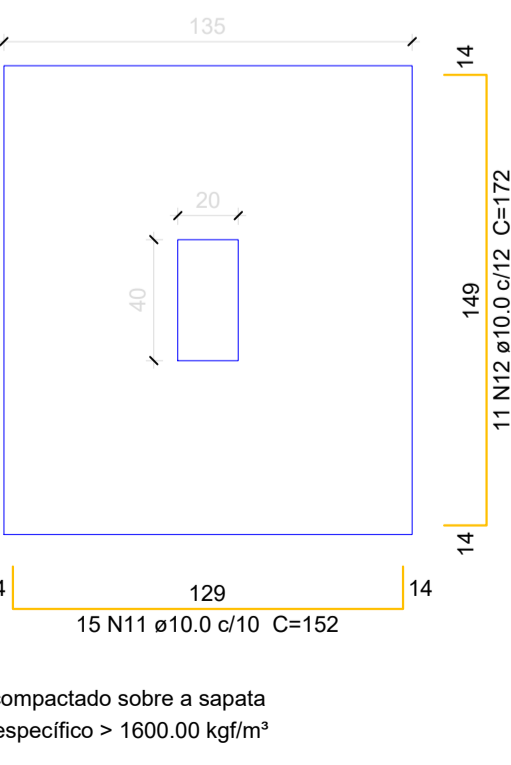
S4=S6=S8=S10=S12=S14
PLANTA
ESC 1:25



S20=S21
PLANTA
ESC 1:25



S2=S18
PLANTA
ESC 1:25



Forma do pavimento Fundação escala 1:100

Resumo do aço

ÁÇO	DIAM (mm)	C.TOTAL (m) + 10%	BARRAS
CA50	8.0	97.2	9.0
CA50	10.0	134.9	12.0
CA50	12.5	868.1	73.0
CA60	5.0	259.1	22

Volume de concreto (C-30) = 12,15 m³

DEMOLIÇÃO / RETIRADA

ESTADO DE SANTA CATARINA
PREFEITURA MUNICIPAL DE SÃO CRISTÓVÃO DO SUL
SECRETARIA DE OBRAS - DEPARTAMENTO DE ENGENHARIA

PRANCHA 05 | 08

OBRA: AMPLIAÇÃO DO GINÁSIO MUNICIPAL - CENTRO

LOCAL: Rua Francisco Rauen

PROJETO:	PROJETO ESTRUTURAL
ARQUIVO:	Projeto Estrutural Ampliação ginásio de Esporte.dwg
ESCALA:	INDICADA UNIDADE: METRO
ÁREA TERRENO:	2.520,00 m²
AMPLIAÇÃO:	91,61 m²
ÁREA TOTAL CONST C/ AMP:	1.287,10 m²
ADMINISTRAÇÃO MUNICIPAL:	2021/2024
DATA:	03/01/2022
REVISÃO:	

Eng. Ciro Fontana Sardi - CREA/SC 063545-0 (e-mail: engenhariasaocristovaosul@gmail.com)