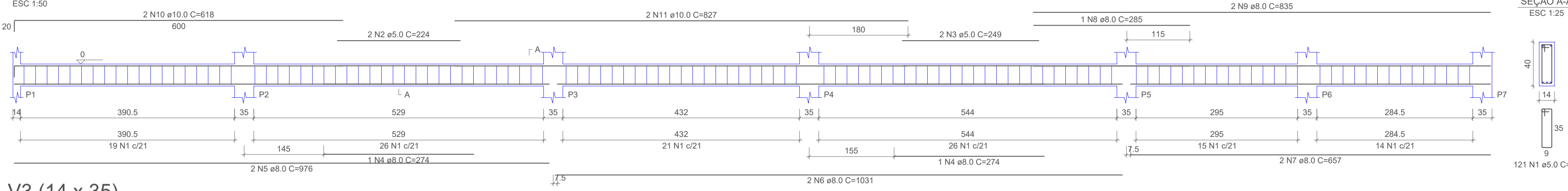
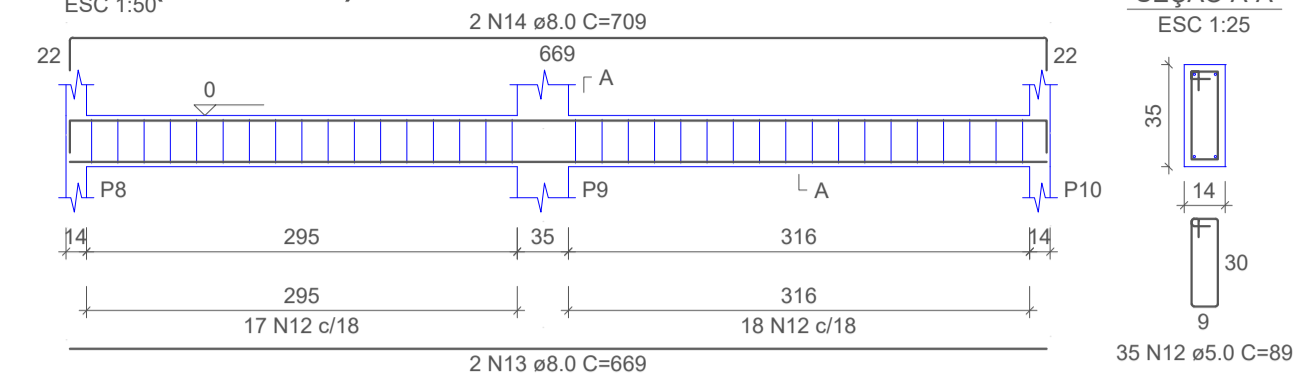


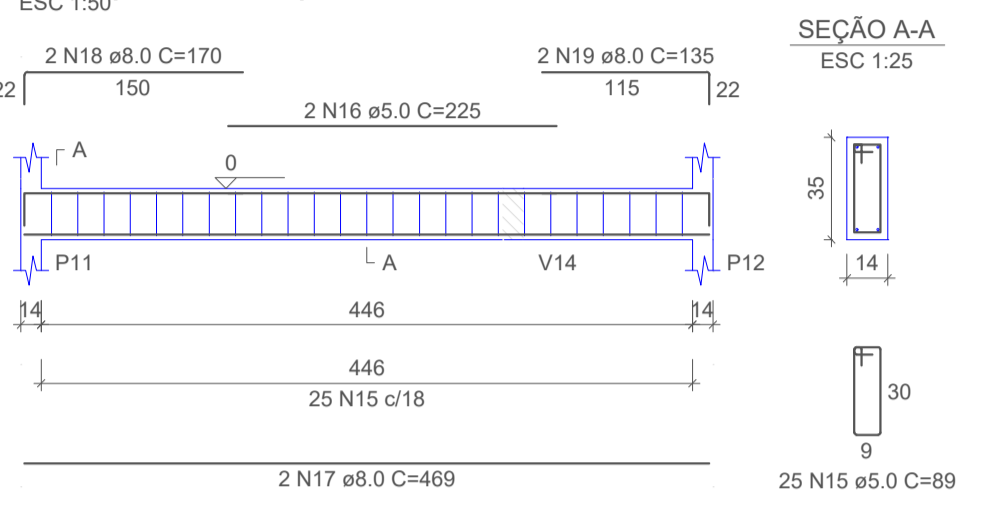
V1 (14 x 40)



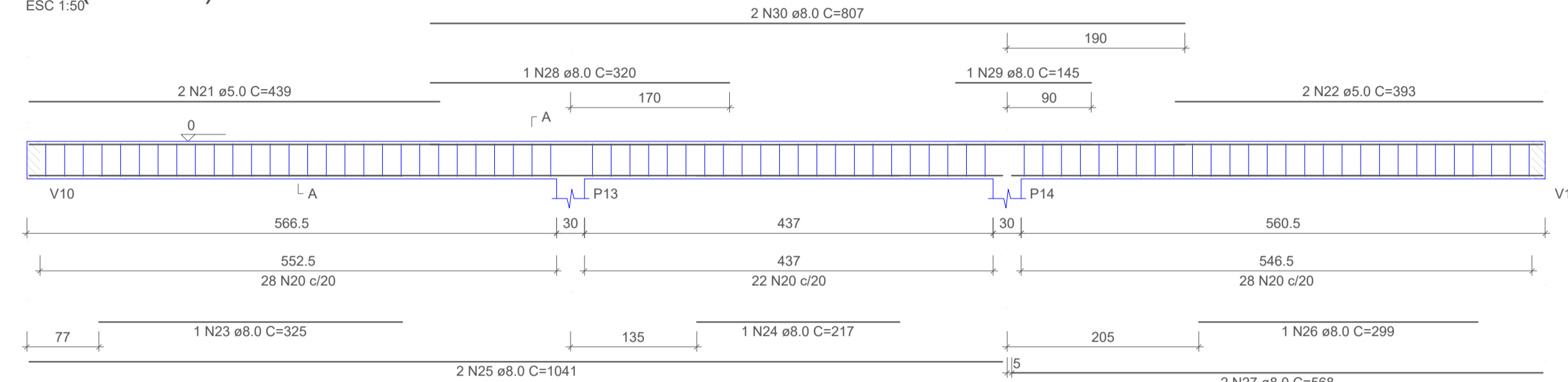
V2 (14 x 35)



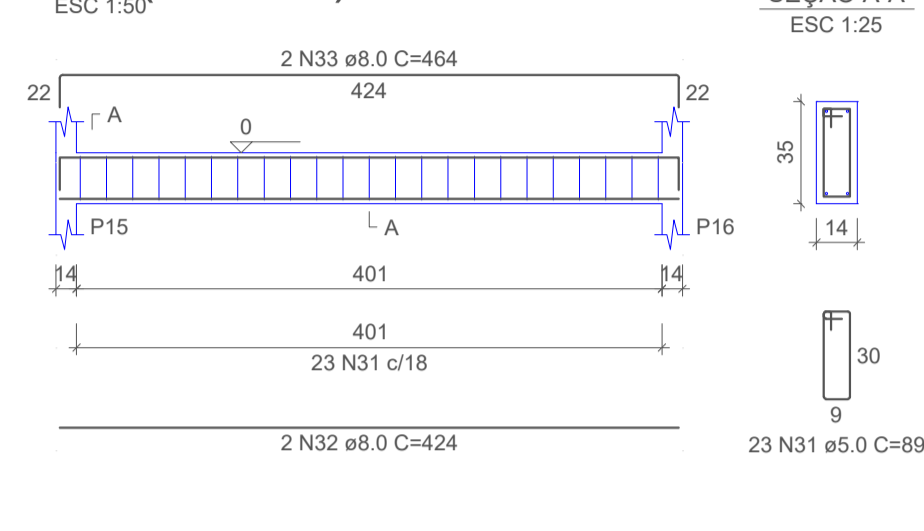
V3 (14 x 35)



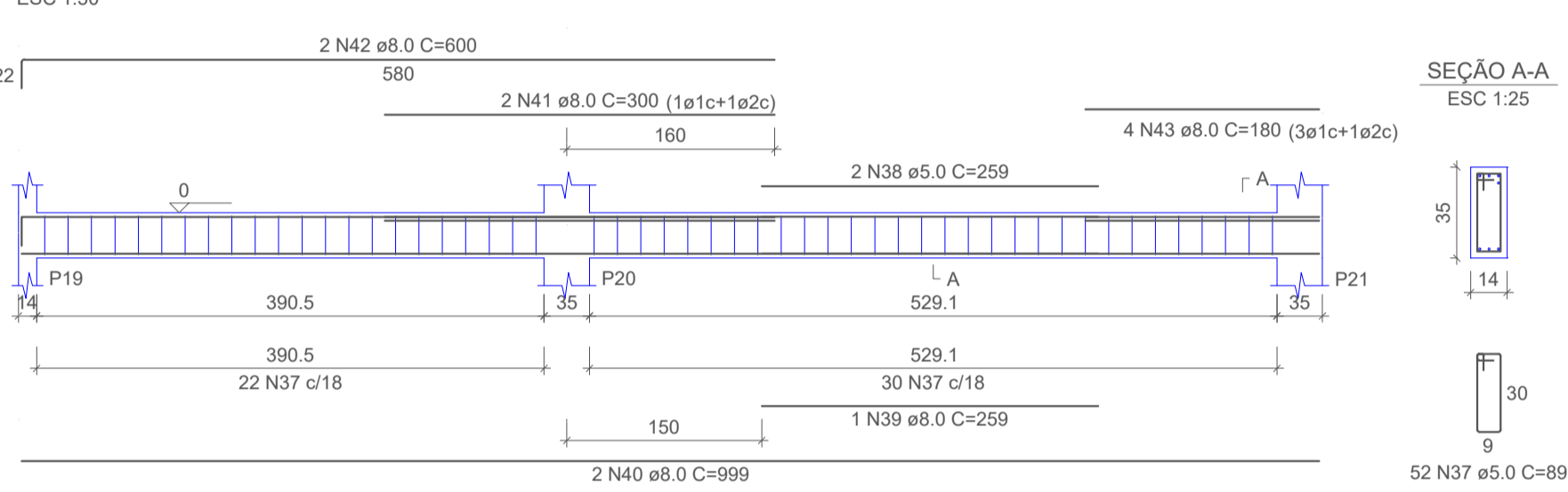
V4 (20 x 40)



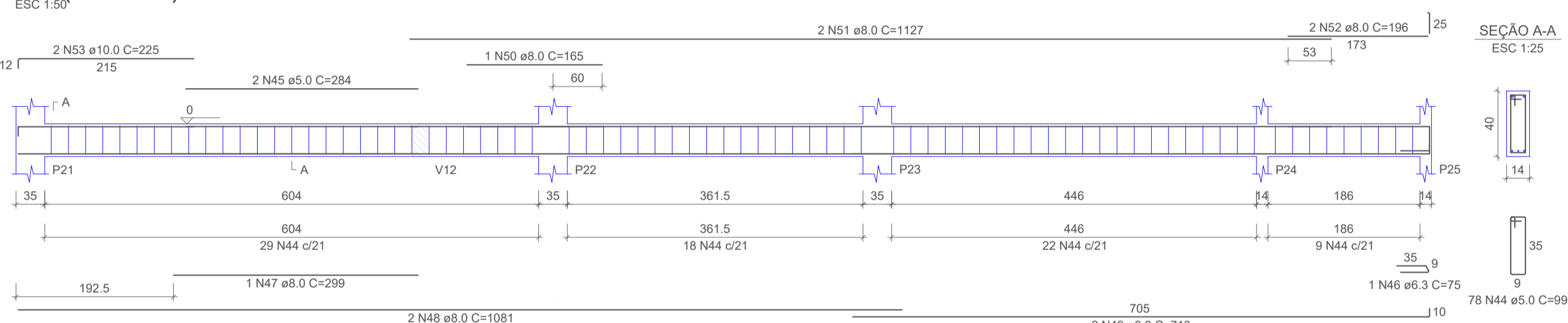
V5 (14 x 35)



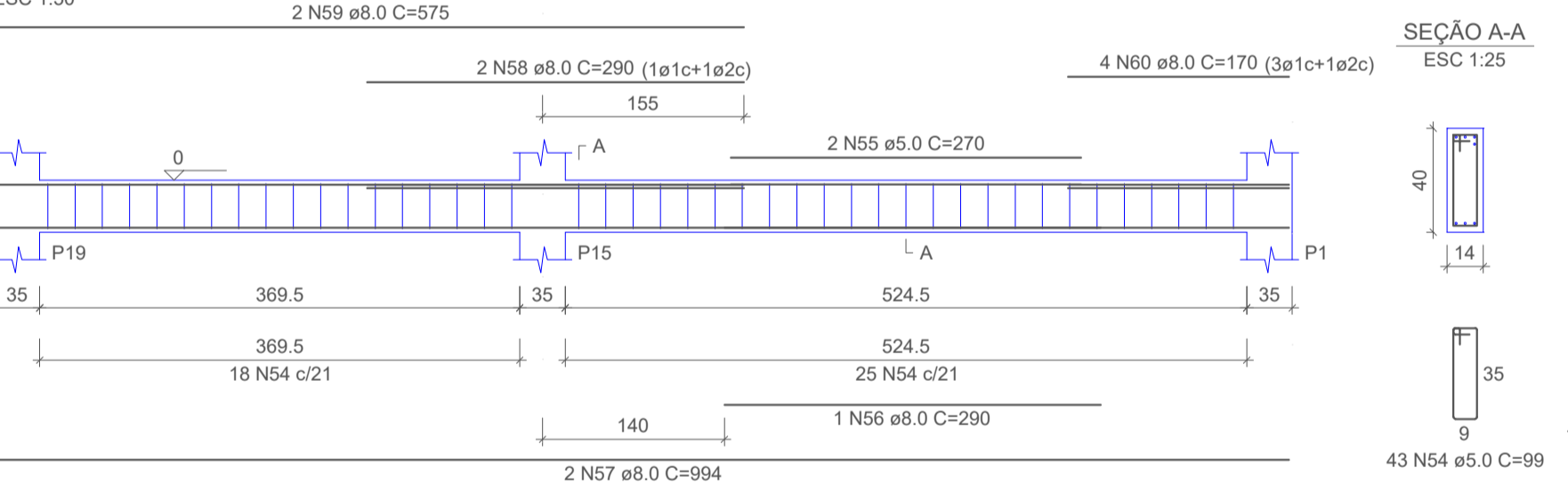
V7 (14 x 35)



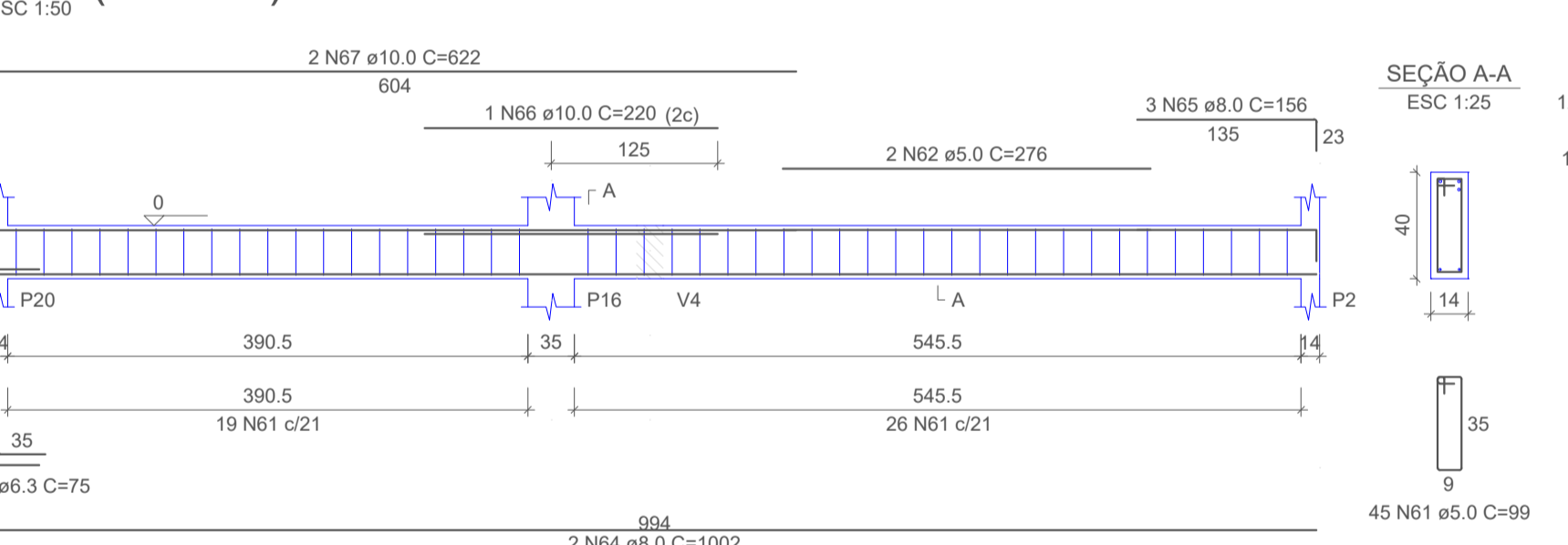
V8 (14 x 40)



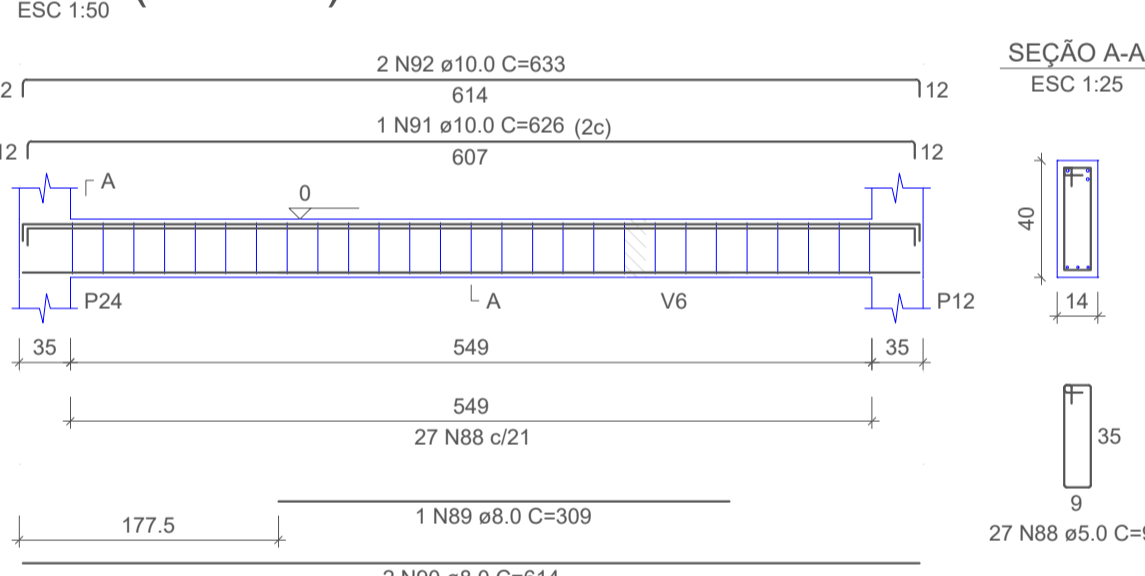
V9 (14 x 40)



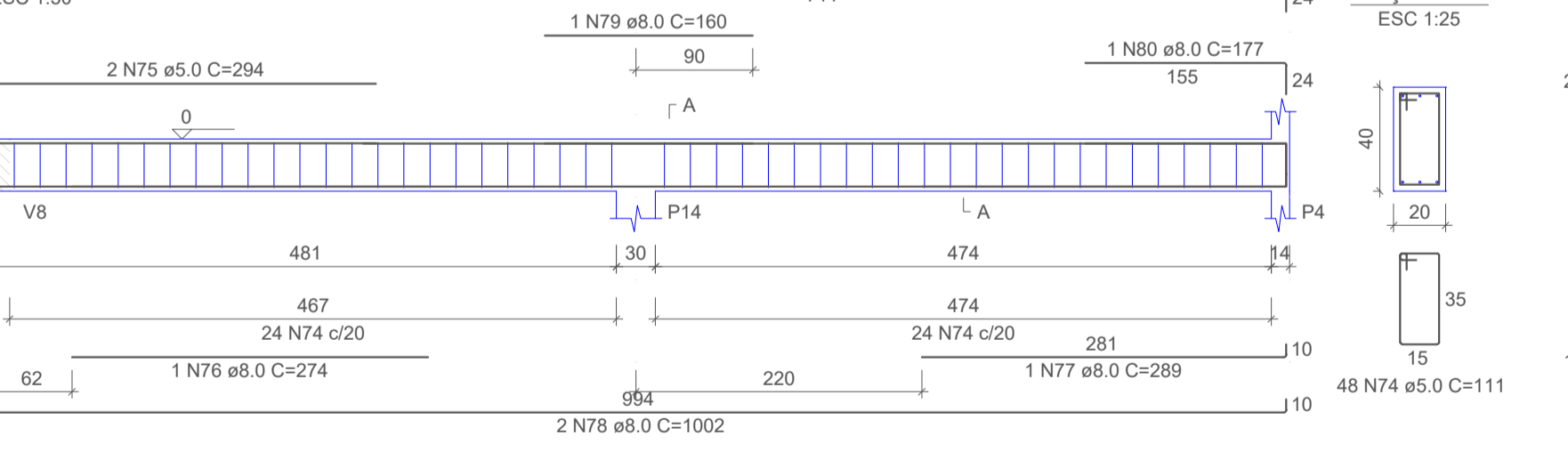
V10 (14 x 40)



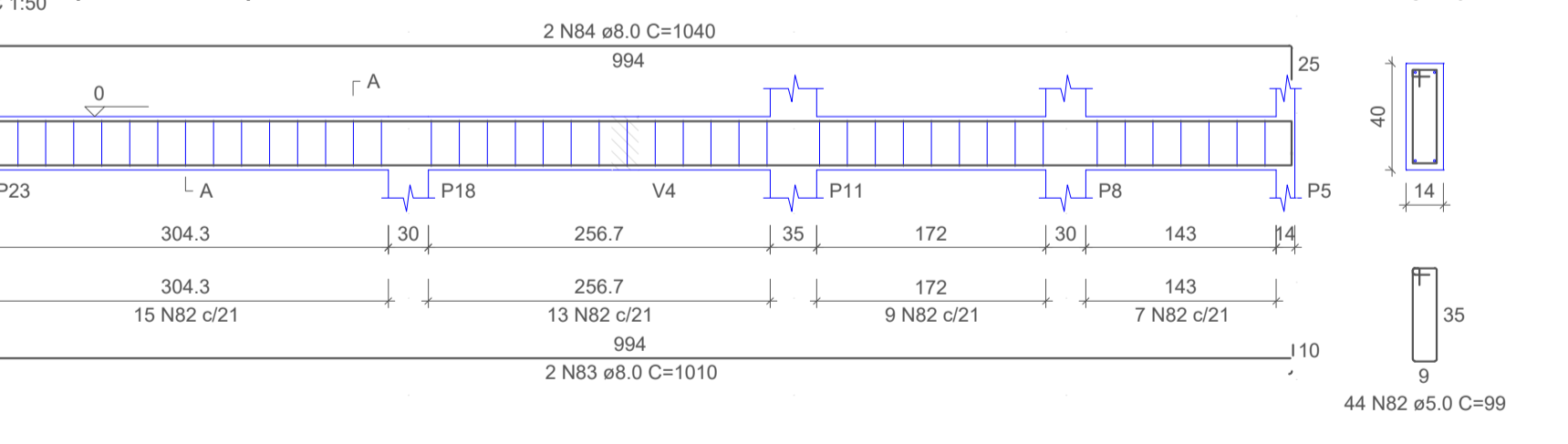
V15 (14 x 40)



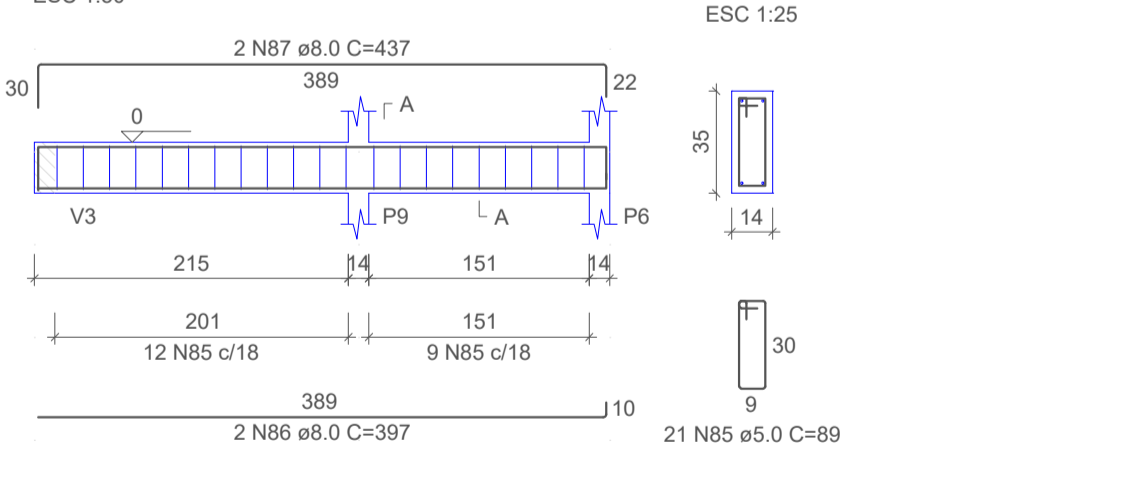
V12 (20 x 40)



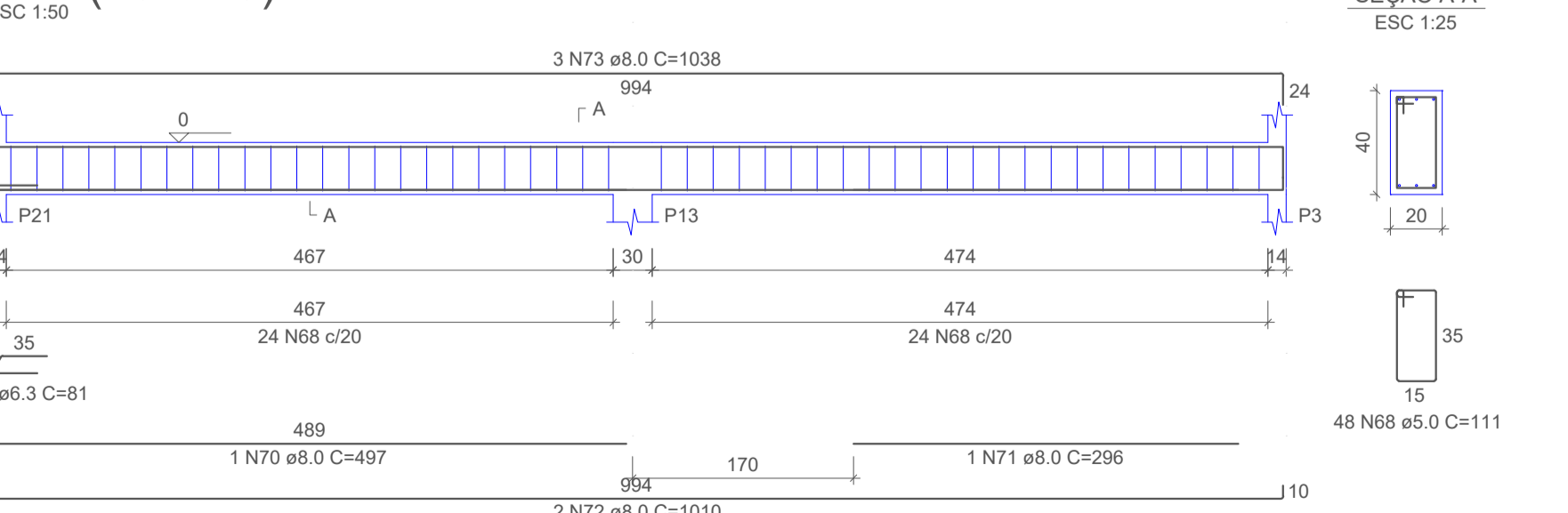
V13 (14 x 40)



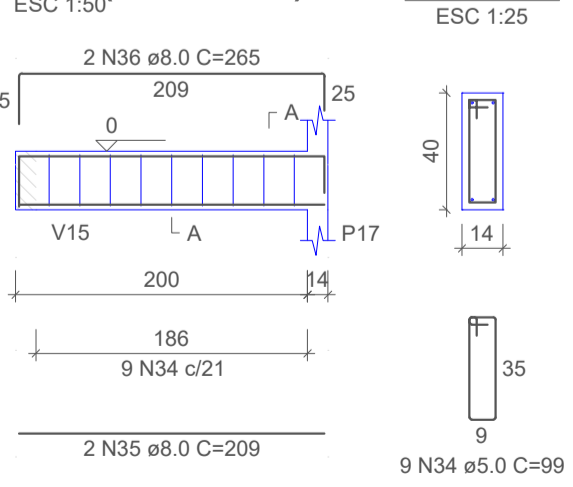
V14 (14 x 35)



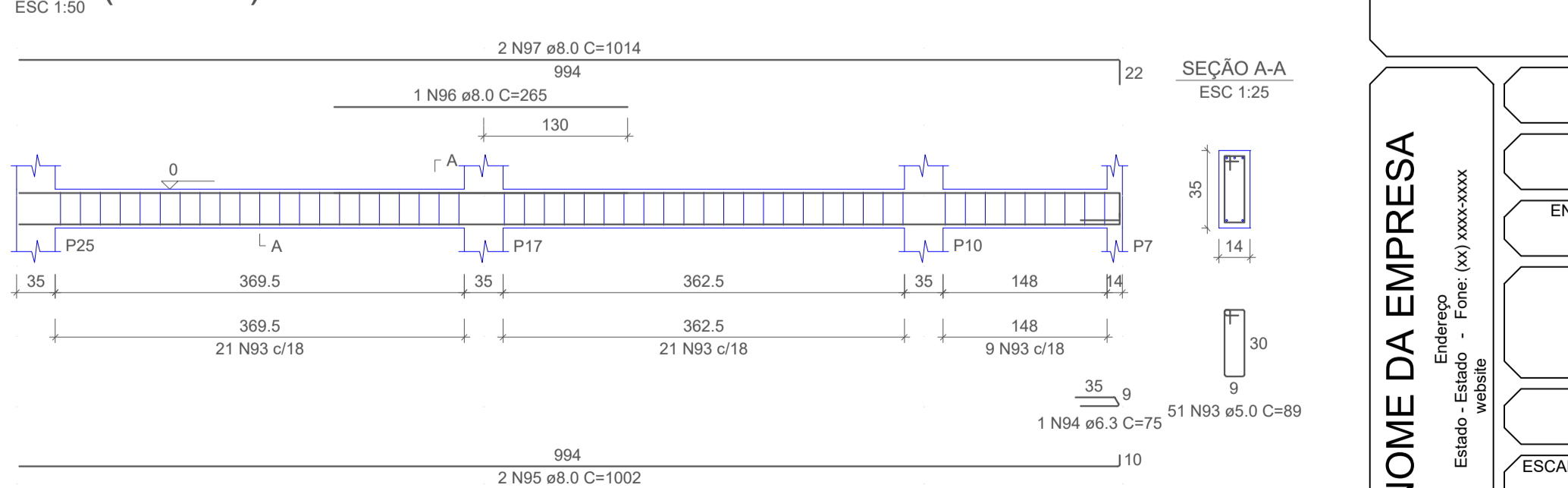
V11 (20 x 40)



V6 (14 x 40)



V16 (14 x 35)



RELAÇÃO DO AÇO

ELEMENTO	AÇO	N	DIAM (mm)	QUANT	C.UNIT (cm)	C.TOTAL (cm)
V1	CA60	1	5.0	121	99	11979
	CA80	2	5.0	2	224	448
	CA80	3	5.0	2	249	498
	CA50	4	8.0	2	274	548
	CA50	5	8.0	2	976	1952
	CA50	6	8.0	2	1031	2062
	CA50	7	8.0	2	657	1314
	CA50	8	8.0	1	285	285
	CA50	9	8.0	2	835	1670
	CA50	10	10.0	2	618	1236
V2	CA50	11	10.0	2	827	1654
	CA60	12	5.0	35	89	3115
	CA50	13	8.0	2	669	1338
	CA50	14	8.0	2	709	1418
	CA60	15	5.0	25	89	2225
	CA60	16	5.0	2	225	450
	CA50	17	8.0	2	469	938
	CA50	18	8.0	2	170	340
	CA50	19	8.0	2	155	310
	CA60	20	5.0	78	111	8658
V3	CA60	21	5.0	2	439	878
	CA50	22	5.0	2	393	786
	CA50	23	8.0	1	325	325
	CA50	24	8.0	1	217	217
	CA50	25	8.0	2	1041	2082
	CA50	26	8.0	1	299	299
	CA50	27	8.0	2	568	1136
	CA50	28	8.0	1	320	320
	CA50	29	8.0	1	145	145
	CA50	30	8.0	2	807	1614
V4	CA60	31	5.0	23	89	2047
	CA50	32	8.0	2	424	848
	CA50	33	8.0	2	464	928
	CA60	34	5.0	9	99	891
	CA50	35	8.0	2	209	418
	CA50	36	8.0	2	265	530
	CA60	37	5.0	89	4628	4628
	CA60	38	5.0	2	259	518
	CA50	39	8.0	1	259	259
	CA50	40	8.0	2	999	1998
V5	CA50	41	8.0	2	300	600
	CA50	42	8.0	2	600	1200
	CA50	43	8.0	4	180	720
	CA60	44	5.0	78	99	7722
	CA60	45	5.0	2	284	568
	CA50	46	6.3	1	75	75
	CA50	47	8.0	2	269	538
	CA50	48	8.0	2	1081	2162
	CA50	49	8.0	2	713	1426
	CA50	50	8.0	2	165	330
V6	CA50	51	8.0	2	1127	2254
	CA50	52	8.0	2	196	392
	CA50	53	10.0	2	225	450
	CA60	54	5.0	43	99	4257
	CA60	55	5.0	2	270	540
	CA50	56	8.0	1	290	290
	CA50	57	8.0	2	994	1988
	CA50	58	8.0	2	290	580
	CA50	59	8.0	2	575	1150
	CA60	60	8.0	4	170	680
V7	CA60	61	5.0	45	99	4455
	CA60	62	5.0	2	278	556
	CA60	63	6.3	1	75	75
	CA50	64	8.0	2	1002	2004
	CA50	65	8.0	3	156	468
	CA50	66	10.0	1	220	220
	CA50	67	10.0	2	622	1244
	CA60	68	5.0	48	111	5328
	CA50	69	6.3	1	81	81
	CA50	70	8.0	1	497	497
V8	CA50	71	8.0	1	296	296
	CA50	72	8.0	2	1010	2020
	CA50	73	8.0	3	1038	3114
	CA60	74	5.0	48	111	5328
	CA60	75	5.0	2	294	588
	CA50	76	8.0	1	274	274
	CA50	77	8.0	1	289	289
	CA50	78	8.0	2	1002	2004
	CA50	79	8.0	1	160	160
	CA50	80	8.0	1	177	177
V9	CA50	81	8.0	2	733	1466
	CA60	82	5.0	44	89	4356
	CA50	83	8.0	2	1010	2020
	CA50	84	8.0	2	1040	2080
	CA60	85	5.0	21	89	1869
	CA50	86	8.0	2	397	794
	CA50	87	8.0	2	437	874
	CA60	88	5.0	27	99	2673
	CA50	89	8.0	1	309	309
	CA50	90	8.0	2	614	1228
V10	CA50	91	10.0	1	626	626
	CA50	92	10.0	2	633	1266
	CA60	93	5.0	51	89	4539
	CA50	94	6.3	1	75	75
	CA50	95	8.0	2	1002	2004
	CA50	96	8.0	1	265	265
	CA50	97	8.0	2	1014	2028

RESUMO DO AÇO

AÇO	DIAM (mm)	C.TOTAL (m)	PESO + 10% (kg)
CA50	6.3	3.1	0.8
CA50	8.0	615.3	267.1
CA60	10.0	67	45.4
CA60	5.0	799	135.5
PESO TOTAL (kg)			
CA50		313.3	
CA60		135.5	

Volume de concreto (C-25) = 8.74 m³
Área de forma = 135.39 m²

PROJETO ESTRUTURAL

OBRA: EDIFICAÇÃO ALVENARIA CONVENCIONAL

CLIENTE: Município de Sao Cristovao do Sul
CNPJ: 95.991.261/0001-27

ENDEREÇO: RITA DE CÁSSIA OLIVEIRA, SN
INTEGRAÇÃO, SAO CRISTOVAO DO SUL

RESPONSÁVEL TÉCNICO: ANDERSON JOSE COUSSEAU CREA: 159371-8

CONTEÚDO: Vigas Baldrame

ESCALA: Indicada DATA: 27/10/2022 PRANCHA: 03/05

UNIDADE: cm ARQUIVO: Xxx REVISÃO: 00

NOME DA EMPRESA
Endereço - Estado - Fone: (xx) xxx-xxxx
website