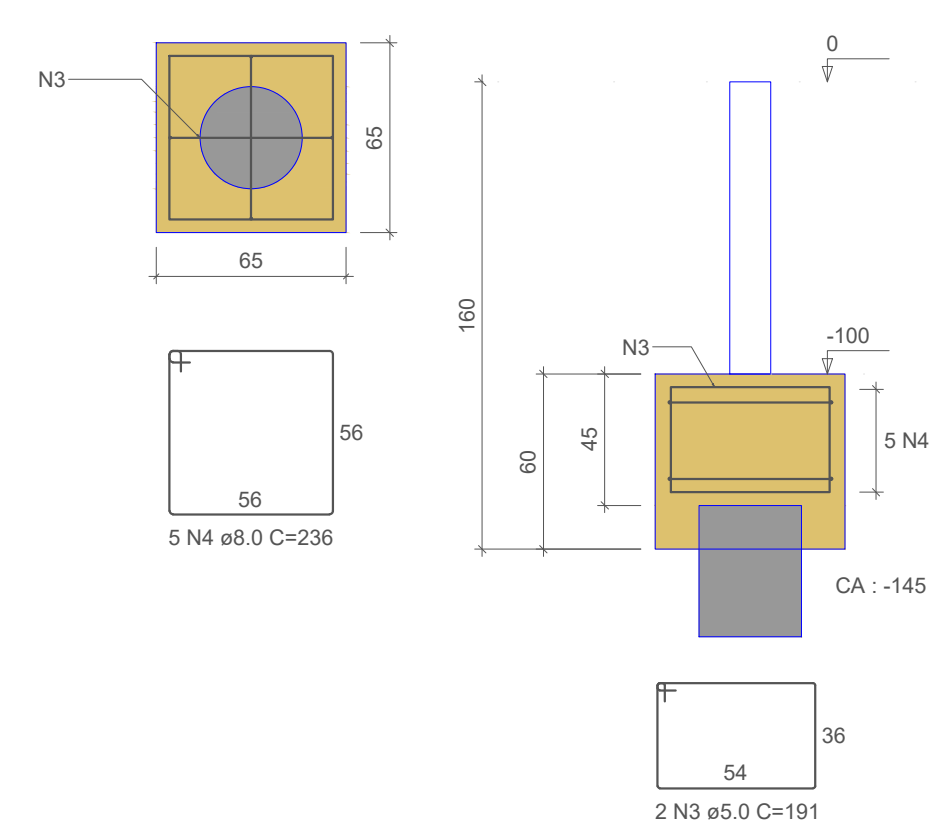
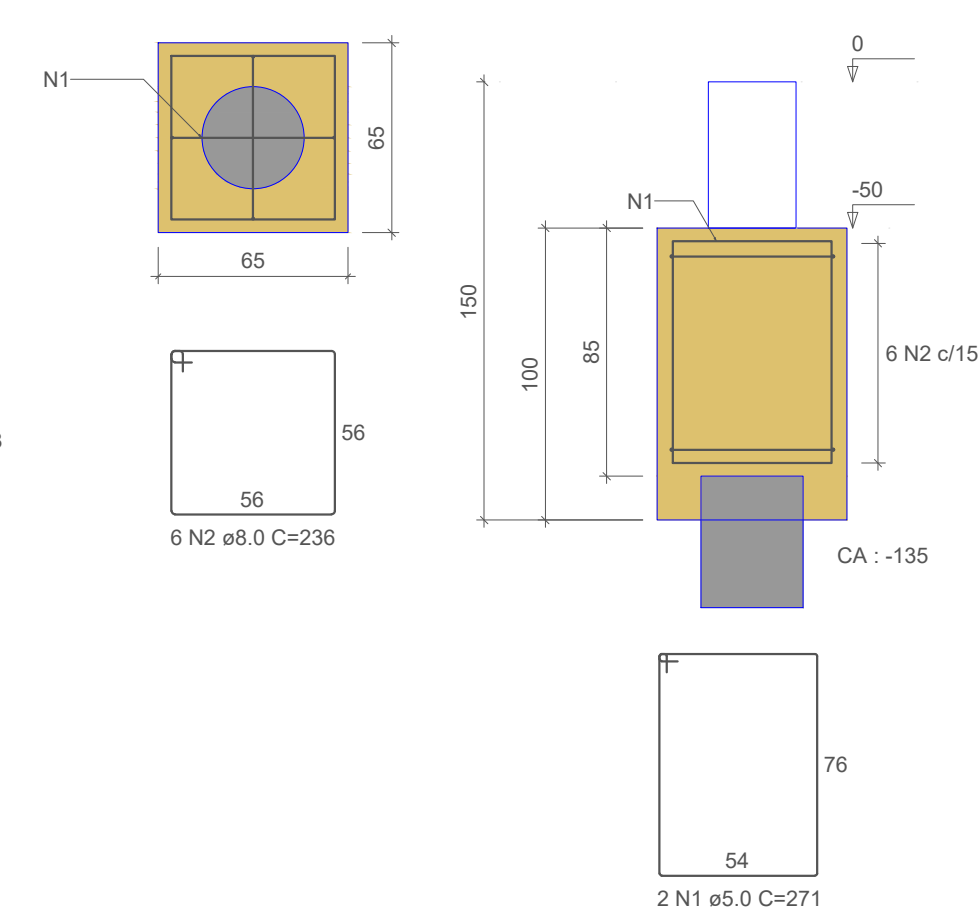


B1=B2=B3=B4=B5=B6=B7=B8=B9=B10=B11=B12
 =B14=B15=B16=B17=B18=B19=B20=B21=B22
 =B23=B24=B25
 1xC35 - 7m
 PLANTA
 ESC 1:25



B13
 1xC35 - 7m
 PLANTA
 ESC 1:25



RELAÇÃO DO AÇO

ELEMENTO	AÇO	N	DIAM (mm)	QUANT	C.UNIT (cm)	C.TOTAL (cm)
B13	CA80	1	5.0	2	271	542
	CA50	2	8.0	6	236	1416
24xB25	CA60	3	5.0	48	191	9168
	CA50	4	8.0	236		28320

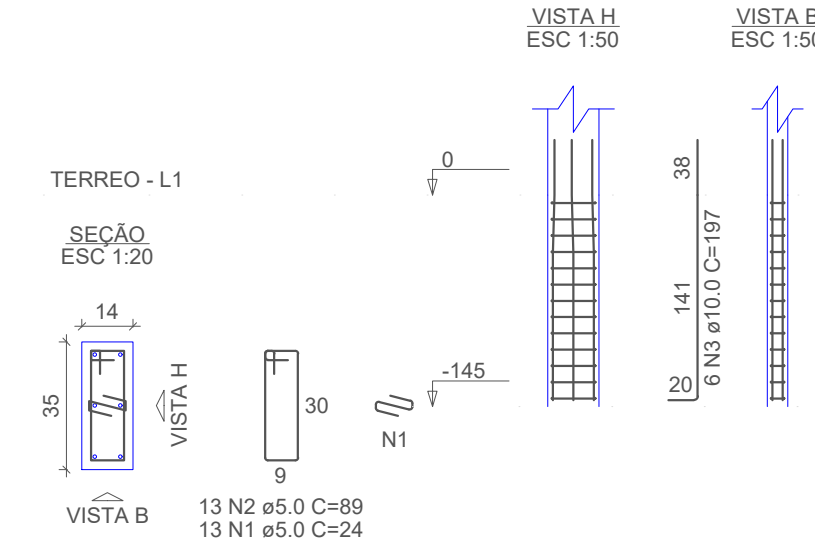
RESUMO DO AÇO

AÇO	DIAM (mm)	C.TOTAL (m)	PESO + 10% (kg)
CA50	8.0	297.4	129.1
CA60	5.0	97.1	16.5

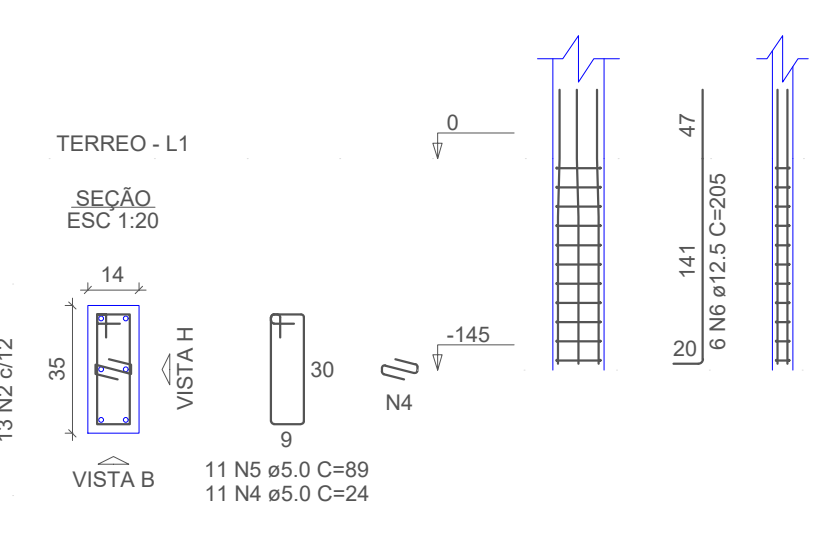
PESO TOTAL (kg)
 CA50 129.1
 CA60 16.5

Volume de concreto (C-25) = 6.15 m³
 Área de forma = 40.04 m²

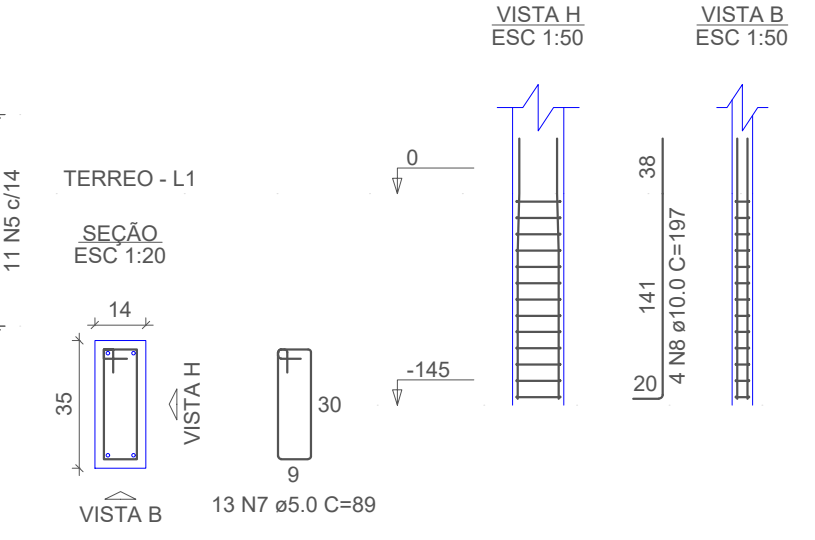
P1=P3=P4=P5=P7=P15=
 =P17=P19=P21=P22=P23=
 =P25



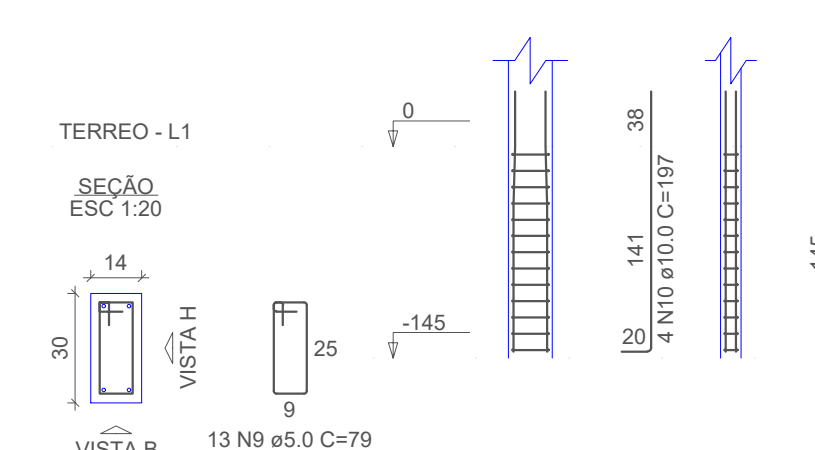
P2



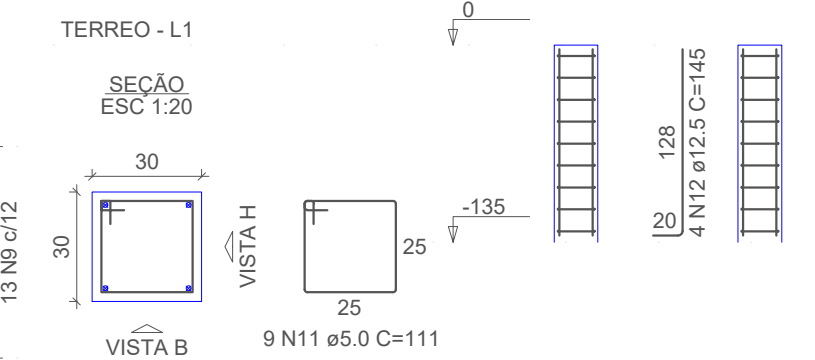
P6=P9=P10=P11=P12=
 =P16=P20=P24



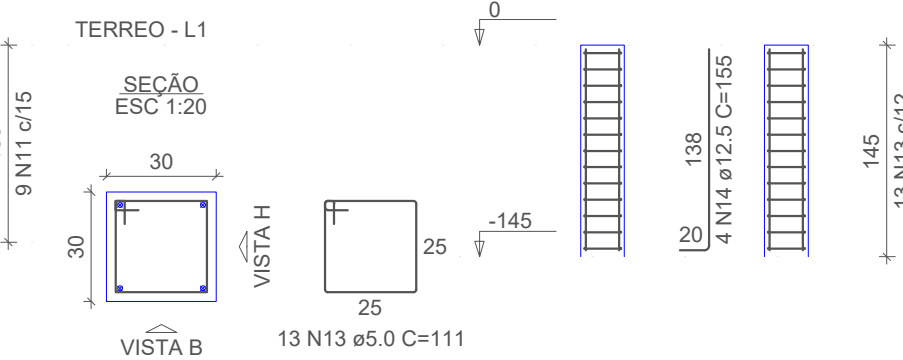
P8



P13



P14=P18



RESUMO DO AÇO

AÇO	DIAM (mm)	C.TOTAL (m)	PESO + 10% (kg)
CA50	10.0	212.8	144.3
CA60	5.0	30.5	32.3
		330.4	56

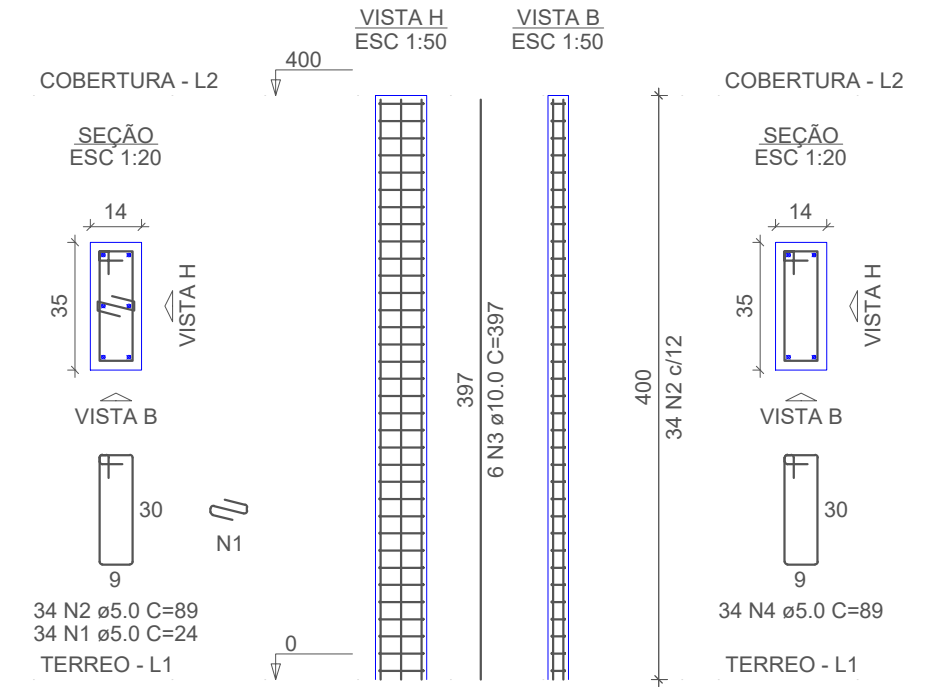
PESO TOTAL (kg)
 CA50 176.6
 CA60 56

Volume de concreto (C-25) = 1.30 m³
 Área de forma = 24.46 m²

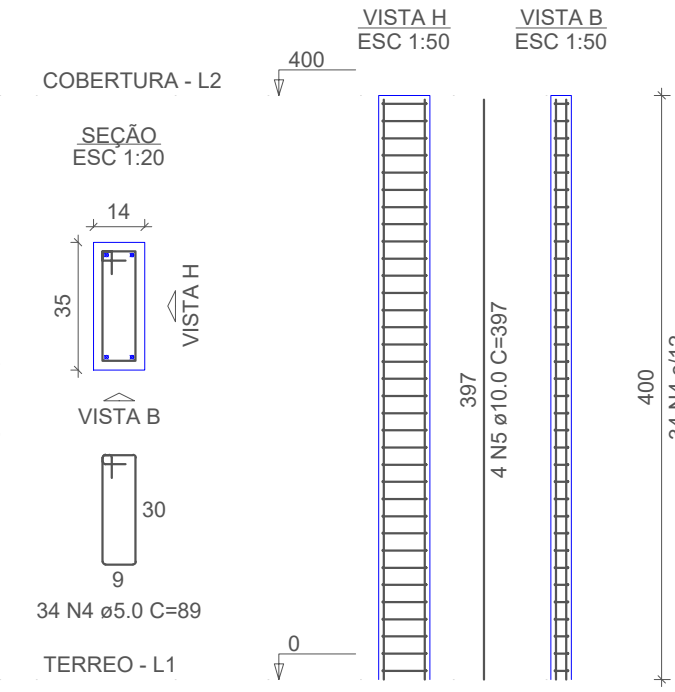
RELAÇÃO DO AÇO

ELEMENTO	AÇO	N	DIAM (mm)	QUANT	C.UNIT (cm)	C.TOTAL (cm)
12xP1	CA60	1	5.0	156	24	3744
	CA60	2	5.0	156	89	13884
	CA50	3	10.0	72	197	14184
P2	CA60	4	5.0	11	24	264
	CA60	5	5.0	11	89	979
	CA50	6	12.5	6	205	1230
8xP6	CA60	7	5.0	104	89	9256
	CA50	8	10.0	32	197	6304
P8	CA60	9	5.0	13	79	1027
	CA50	10	10.0	4	197	788
	CA60	11	5.0	9	111	999
P13	CA50	12	12.5	4	145	580
	CA60	13	5.0	26	111	2886
2xP14	CA50	14	12.5	8	155	1240

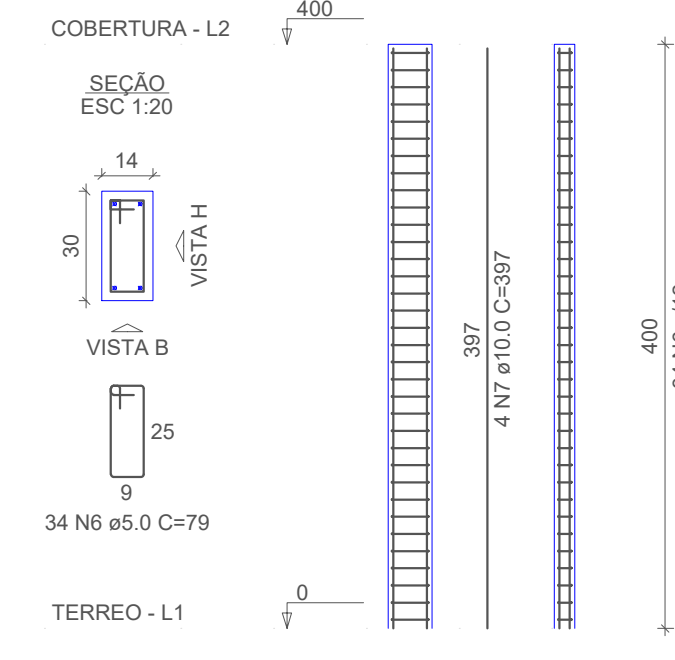
P1=P2=P3=P4=P5=
 =P7=P15=P17=P19=
 =P21=P22=P23=P25



P6=P9=P10=P11=
 =P12=P16=P20=
 =P24



P8



RELAÇÃO DO AÇO

ELEMENTO	AÇO	N	DIAM (mm)	QUANT	C.UNIT (cm)	C.TOTAL (cm)
13xP1	CA60	1	5.0	442	24	10608
	CA60	2	5.0	442	89	39338
	CA50	3	10.0	78	397	30966
8xP6	CA60	4	5.0	272	89	24208
	CA50	5	10.0	32	397	12704
P8	CA60	6	5.0	34	79	2686
	CA50	7	10.0	4	397	1588

RESUMO DO AÇO

AÇO	DIAM (mm)	C.TOTAL (m)	PESO + 10% (kg)
CA50	10.0	452.6	306.9
CA60	5.0	768.4	130.3

PESO TOTAL (kg)
 CA50 306.9
 CA60 130.3

Volume de concreto (C-25) = 4.28 m³
 Área de forma = 85.84 m²

PILARES TERREO
 escala 1:50

PROJETO ESTRUTURAL

NOME DA EMPRESA
 Endereço:
 Estado - Estado - Fone: (xx) xxx-xxxx
 website

OBRA: EDIFICAÇÃO ALVENARIA CONVENCIONAL

CLIENTE: Município de Sao Cristovao do Sul
 CNPJ: 95.991.261/0001-27

ENDEREÇO: RITA DE CASSIA OLIVEIRA, SN
 INTEGRAÇÃO, SAO CRISTOVAO DO SUL

RESPONSÁVEL TÉCNICO:
 ANDERSON JOSE COUSSEAU CREA: 159371-8

CONTEÚDO: Blocos com Estacas e Pilares e Pilares Arranque

ESCALA: Indicada DATA: 27/10/2022 PRANCHA: 01/05

UNIDADE: cm ARQUIVO: Xxx REVISÃO: 00