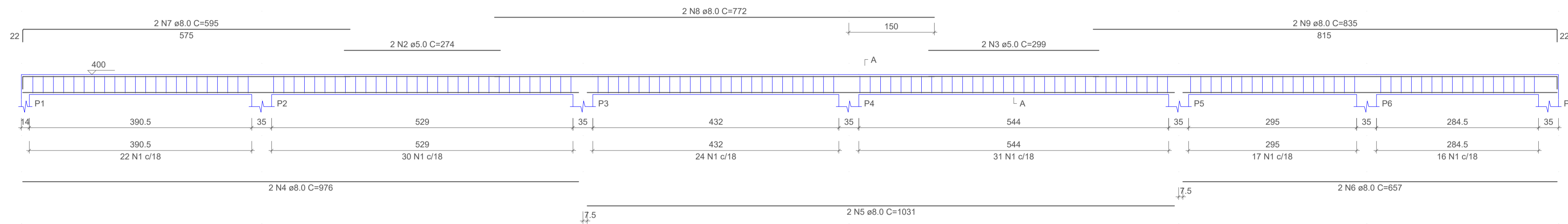


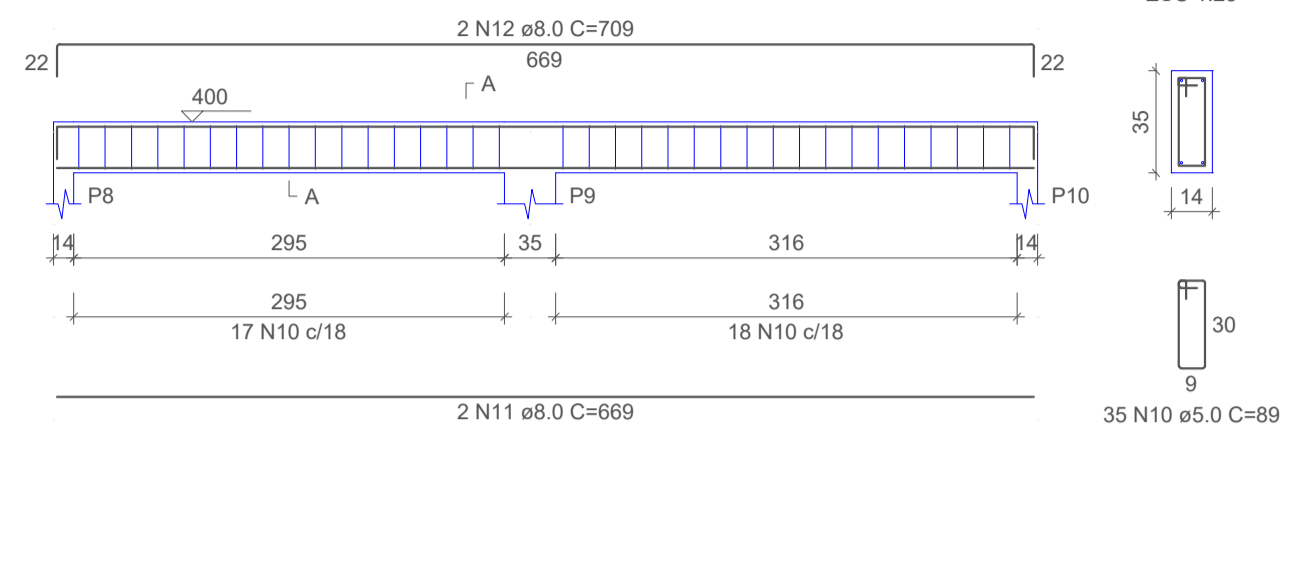
### V1 (14 x 35)

ESC 1:50



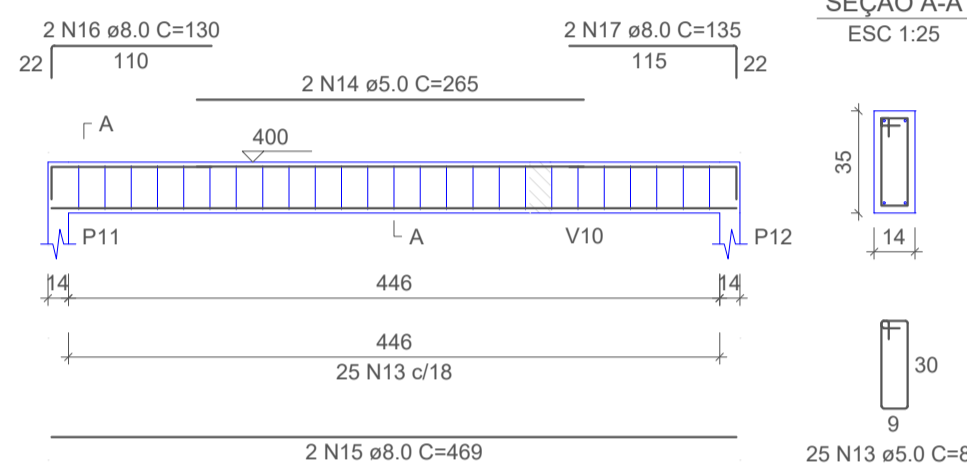
### V2 (14 x 35)

ESC 1:50



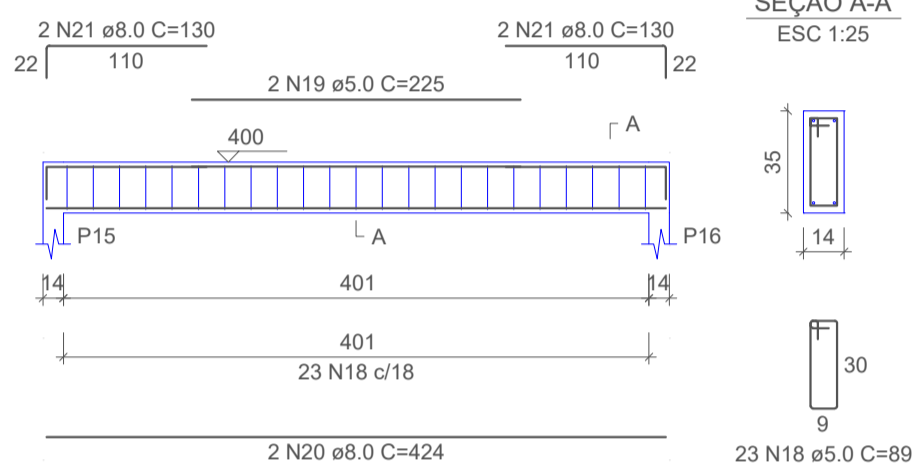
### V3 (14 x 35)

ESC 1:50



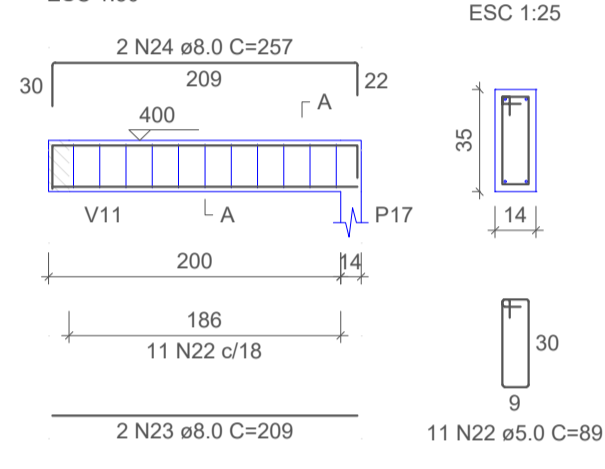
### V4 (14 x 35)

ESC 1:50



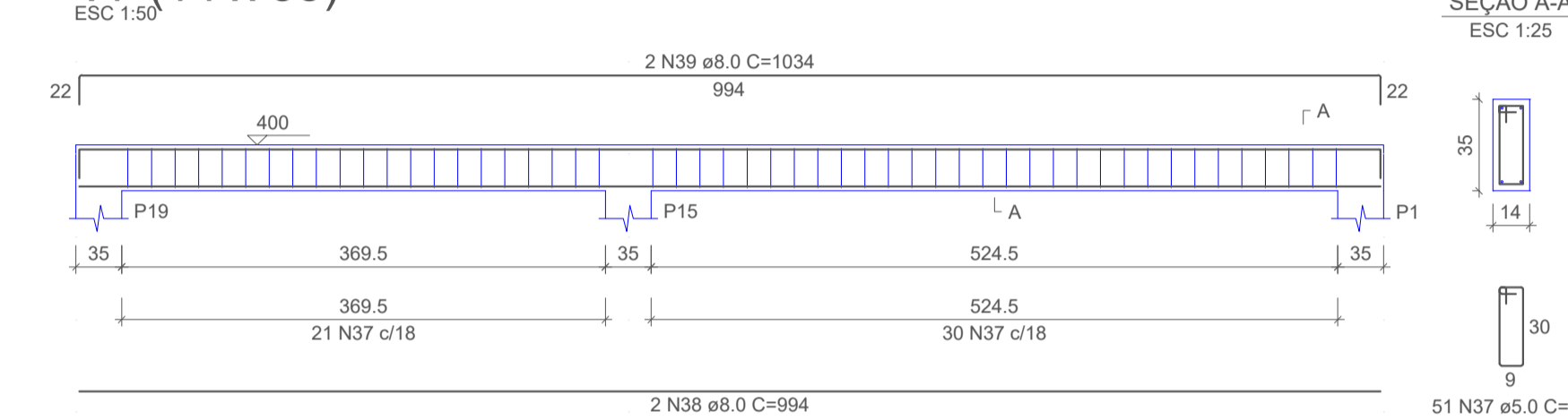
### V5 (14 x 35)

ESC 1:50



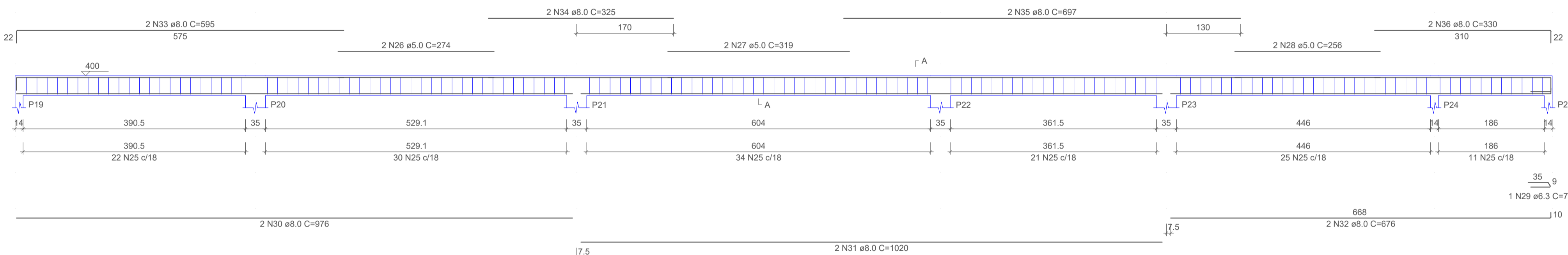
### V7 (14 x 35)

ESC 1:50



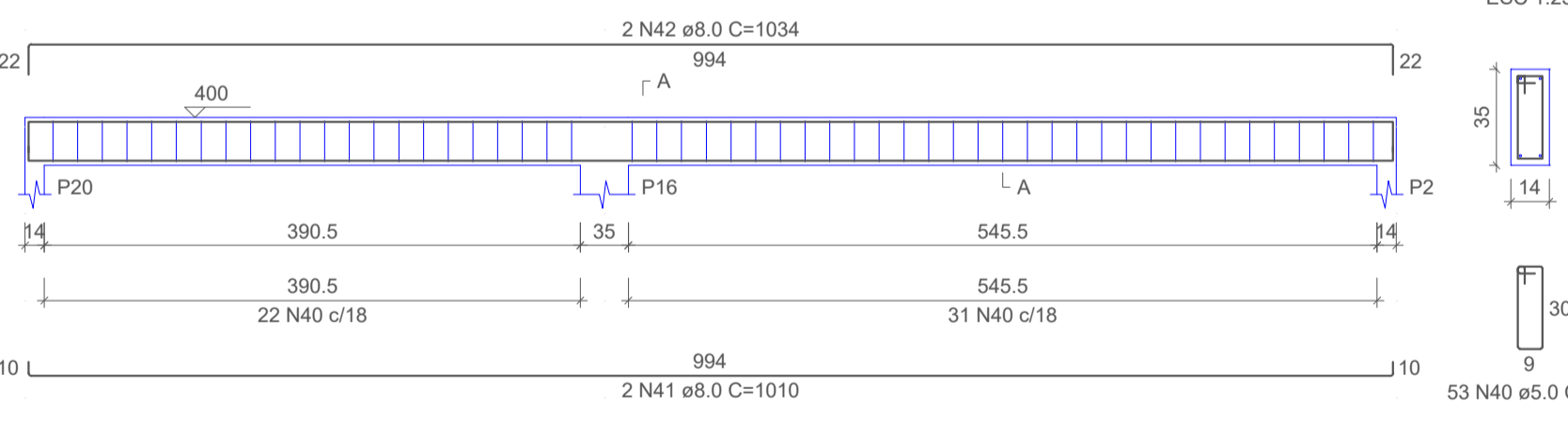
### V6 (14 x 35)

ESC 1:50



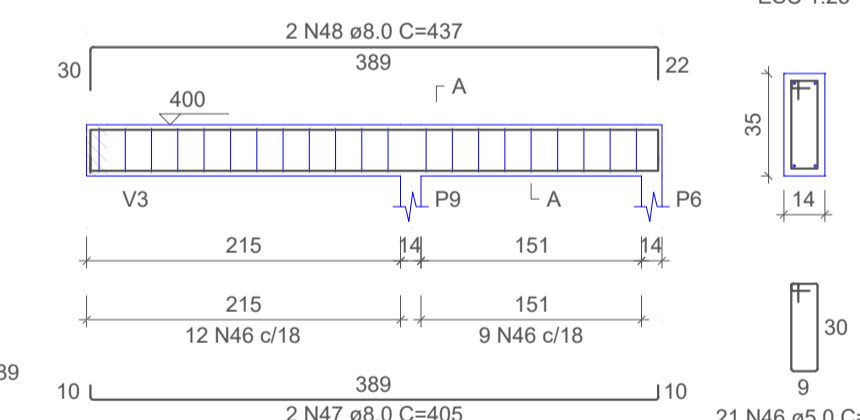
### V8 (14 x 35)

ESC 1:50



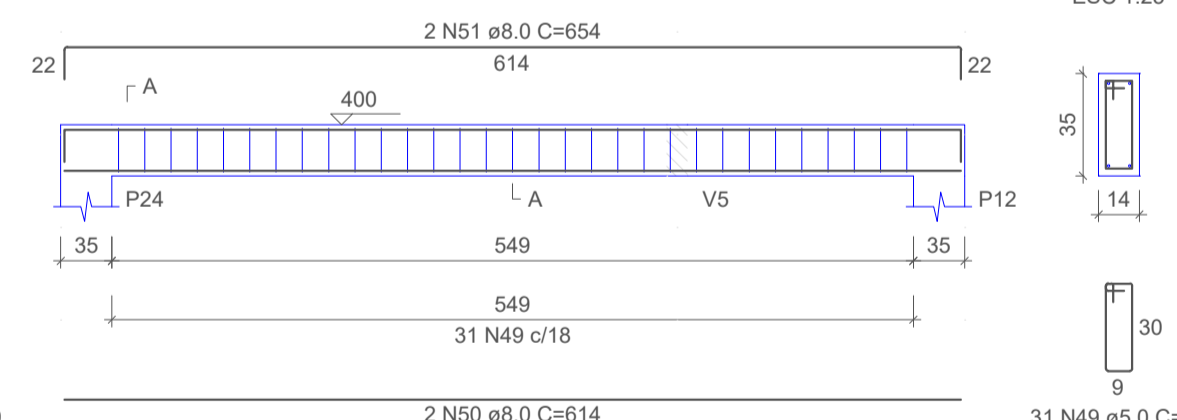
### V10 (14 x 35)

ESC 1:50



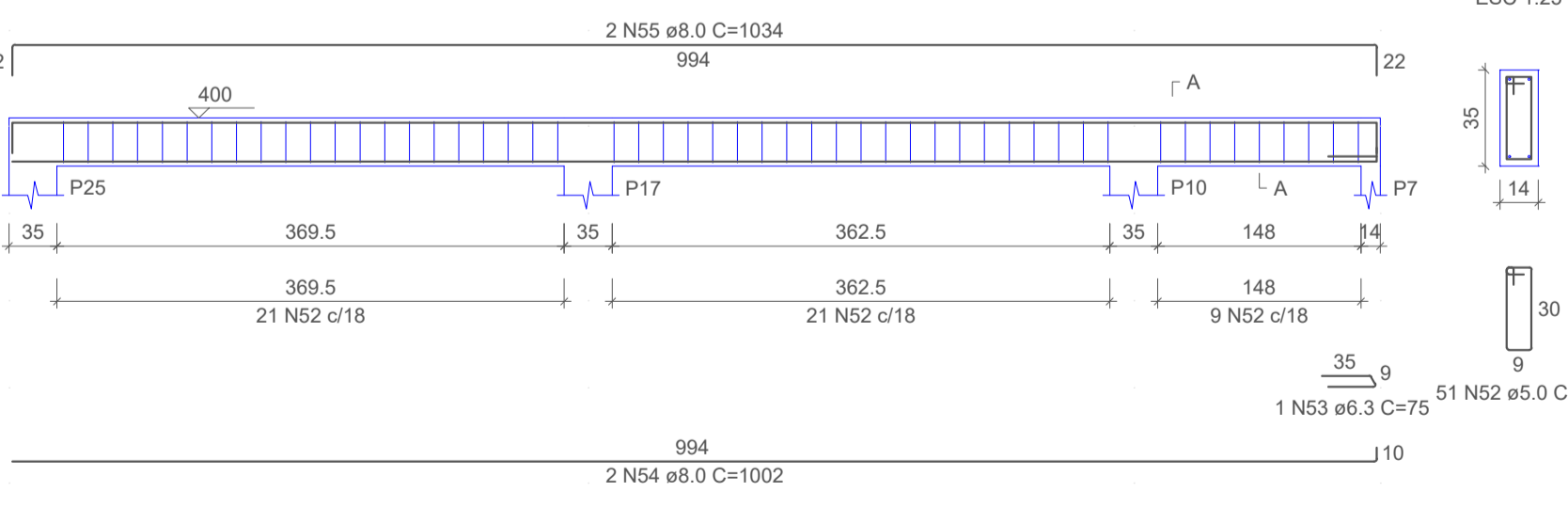
### V11 (14 x 35)

ESC 1:50



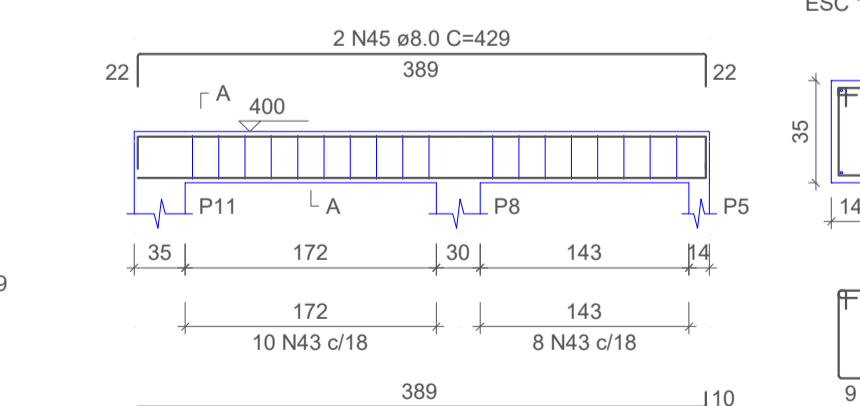
### V12 (14 x 35)

ESC 1:50



### V9 (14 x 35)

ESC 1:50



#### RELAÇÃO DO AÇO

ELEMENTO	AÇO	N	DIAM (mm)	QUANT	C.UNIT (cm)	C.TOTAL (cm)
V1	CA60	1	5.0	140	89	12460
	CA60	2	5.0	2	274	548
	CA60	3	5.0	2	299	598
	CA50	4	8.0	2	976	1952
	CA50	5	8.0	2	1051	2062
	CA50	6	8.0	2	657	1314
	CA50	7	8.0	2	595	1190
	CA50	8	8.0	2	772	1544
	CA50	9	8.0	2	835	1670
	CA60	10	5.0	35	89	3115
	CA50	11	8.0	2	669	1338
V2	CA60	12	8.0	2	709	1418
	CA60	13	5.0	25	89	2225
	CA60	14	5.0	2	265	530
	CA50	15	8.0	2	469	938
	CA50	16	8.0	2	130	260
	CA50	17	8.0	2	135	270
	CA60	18	5.0	23	89	2047
	CA60	19	5.0	2	225	450
	CA50	20	8.0	2	424	848
	CA50	21	8.0	4	130	520
	CA60	22	5.0	11	89	979
V3	CA50	23	8.0	2	209	418
	CA50	24	8.0	2	257	514
	CA60	25	5.0	143	89	12727
	CA60	26	5.0	2	274	548
	CA60	27	5.0	2	319	638
	CA60	28	5.0	2	256	512
	CA50	29	6.3	1	75	75
	CA50	30	8.0	2	976	1952
	CA50	31	8.0	2	1020	2040
	CA50	32	8.0	2	676	1352
	CA50	33	8.0	2	595	1190
V4	CA50	34	8.0	2	325	650
	CA50	35	8.0	2	697	1394
	CA50	36	8.0	2	330	660
	CA60	37	5.0	51	89	4539
	CA50	38	8.0	2	994	1988
	CA50	39	8.0	2	1034	2068
	CA60	40	5.0	53	89	4717
	CA50	41	8.0	2	1010	2020
	CA50	42	8.0	2	1034	2068
	CA60	43	5.0	18	89	1602
	CA50	44	8.0	2	397	794
V5	CA50	45	8.0	2	429	858
	CA60	46	5.0	21	89	1869
	CA50	47	8.0	2	405	810
	CA50	48	8.0	2	437	874
	CA60	49	5.0	31	89	2759
	CA50	50	8.0	2	614	1228
	CA50	51	8.0	2	654	1308
	CA60	52	5.0	51	89	4539
	CA50	53	6.3	1	75	75
	CA50	54	8.0	2	1002	2004
	CA50	55	8.0	2	1034	2068

#### RESUMO DO AÇO

AÇO	DIAM (mm)	C.TOTAL (m)	PESO + 10% (kg)
CA50	6.3	1.5	0.4
CA60	8.0	435.8	189.2
CA60	5.0	574	97.3
PESO TOTAL (kg)			
CA50			189.6
CA60			97.3

Volume de concreto (C-25) = 5.18 m³  
Área de forma = 88.84 m²

## PROJETO ESTRUTURAL

**OBRA:** EDIFICAÇÃO ALVENARIA CONVENCIONAL

**CLIENTE:** Município de São Cristóvão do Sul  
CNPJ: 95.991.261/0001-27

**ENDEREÇO:** RITA DE CÁSSIA OLIVEIRA, SN  
INTEGRAÇÃO, SÃO CRISTÓVAO DO SUL

**RESPONSÁVEL TÉCNICO:**  
ANDERSON JOSE COUSSEAU CREA: 159371-8

**CONTEÚDO:** Vigas Cobertura

**ESCALA:** Indicada **DATA:** 27/10/2022 **PRANCHA:** 05/05

**UNIDADE:** cm **ARQUIVO:** Xxx **REVISÃO:** 00

**NOME DA EMPRESA**  
 Endereço: \_\_\_\_\_  
 Estado: \_\_\_\_\_ Fone: (xx) xxx-xxxx  
 website: \_\_\_\_\_