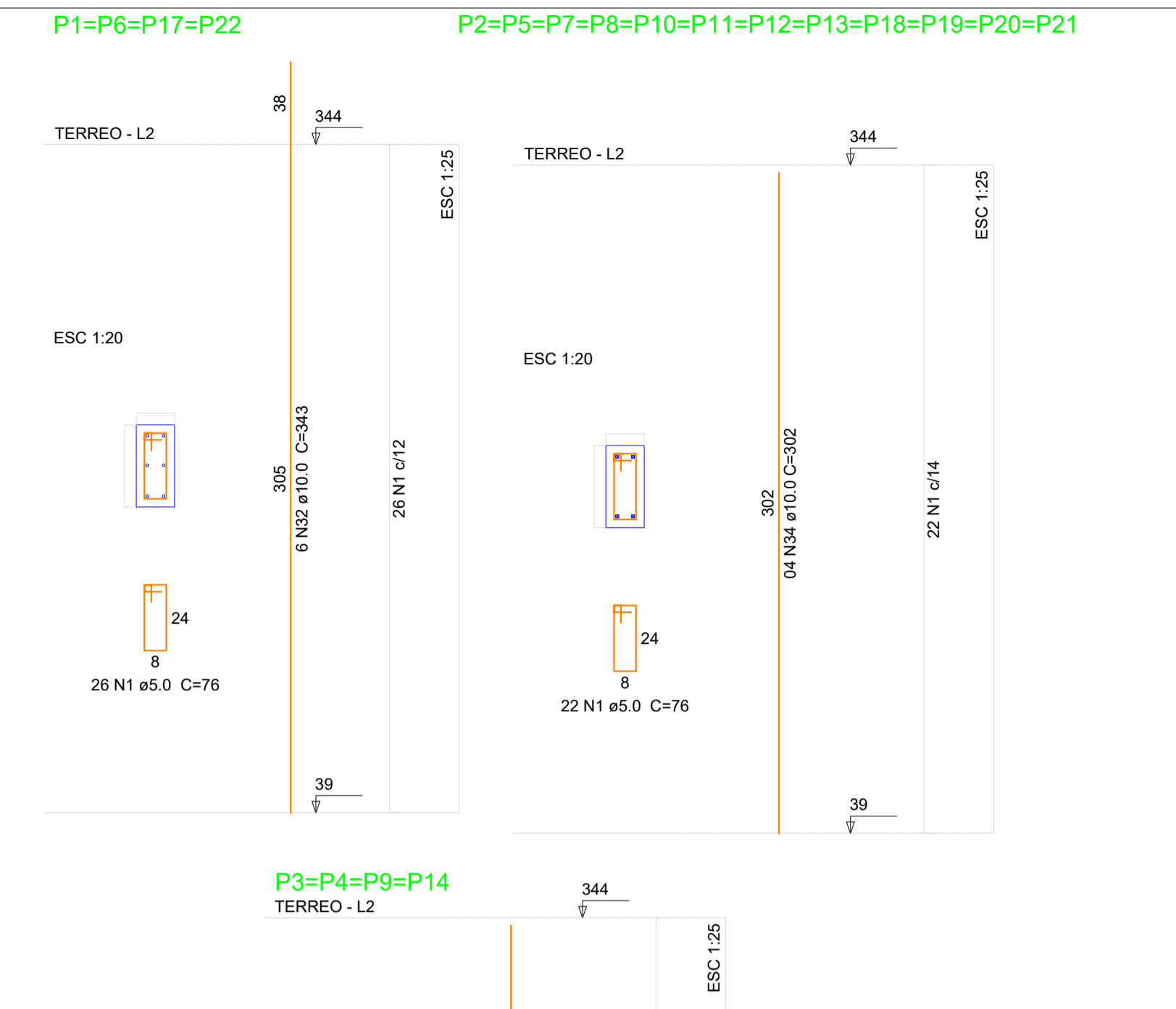
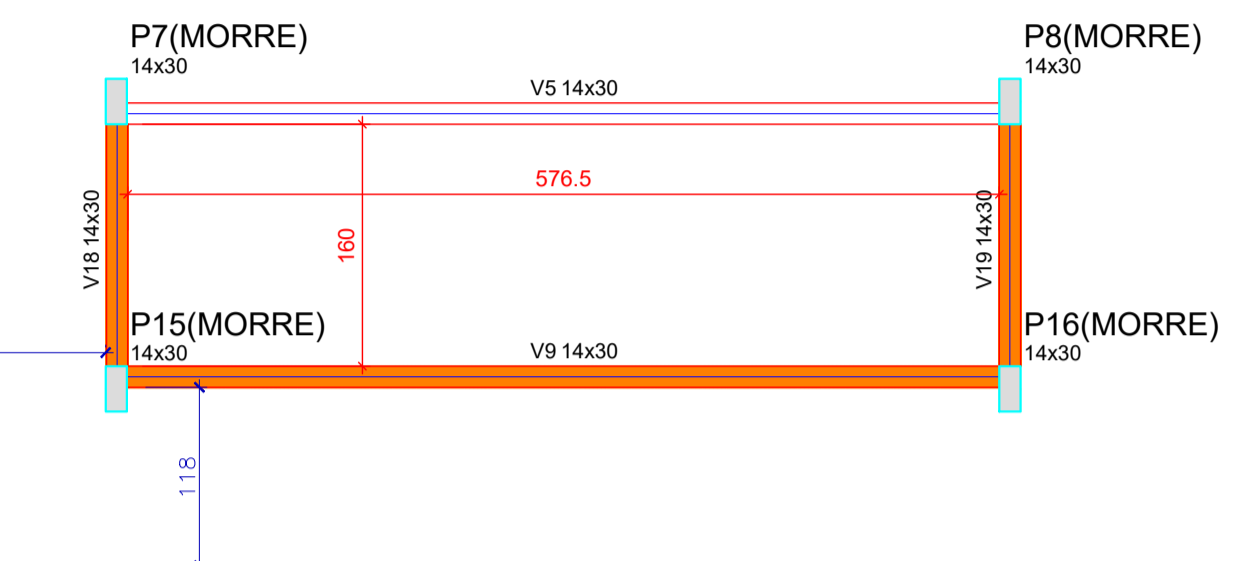


Vigas			
Nome	Seção (cm)	Elevação (cm)	Nível (cm)
V1	14x30	0	344
V2	14x30	0	344
V3	14x30	0	344
V4	14x30	0	344
V5	14x30	0	344
V6	14x30	0	344
V7	14x30	0	344
V8	14x30	0	344
V9	14x30	0	344
V10	14x30	0	344
V11	14x30	0	344
V12	14x30	0	344
V13	14x30	0	344
V14	14x30	0	344
V15	14x30	0	344
V16	14x30	0	344
V17	14x30	0	344
V18	14x30	0	344
V19	14x30	0	344

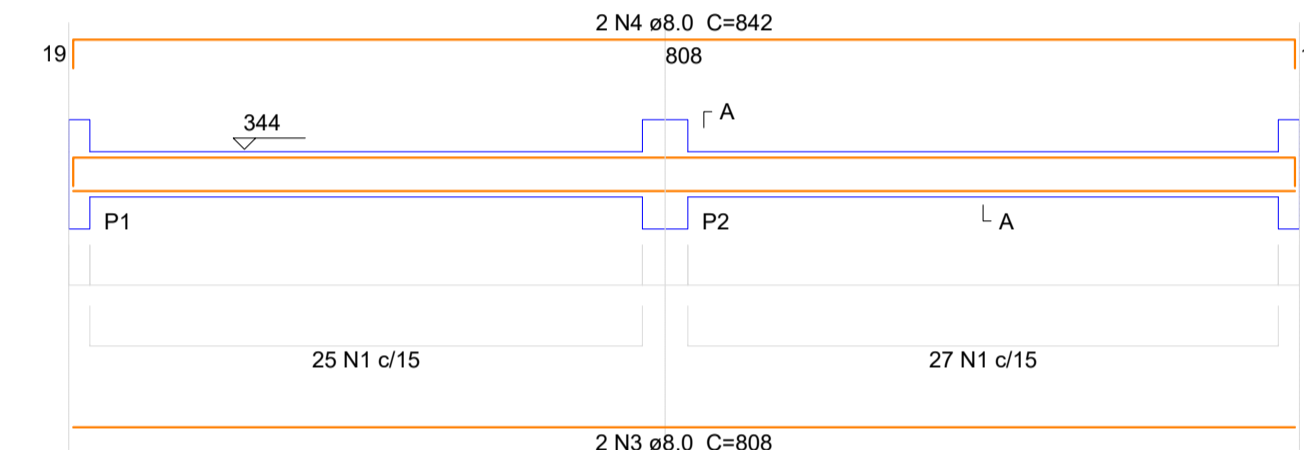
Características dos materiais		
fck	Ecs	
(kgf/cm²)	(kgf/cm²)	
250	238000	

Dimensão máxima do agregado = 19 mm

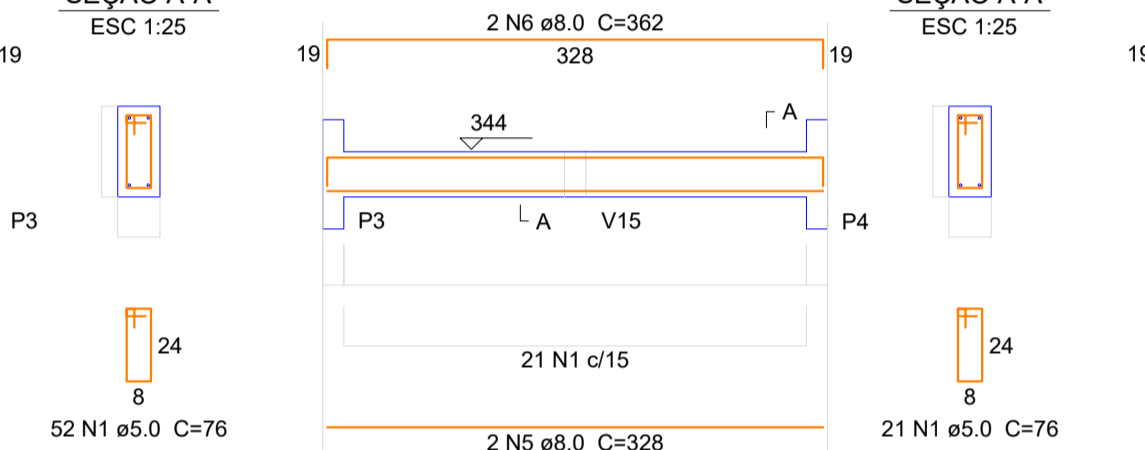


Forma do pavimento Terreo escala 1:50

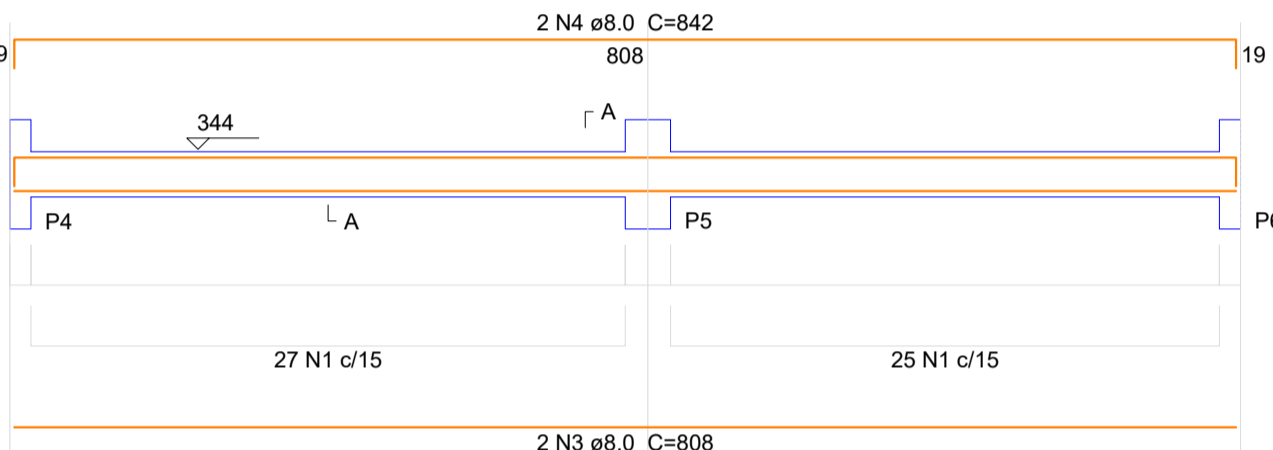
V1 ESC 1:50



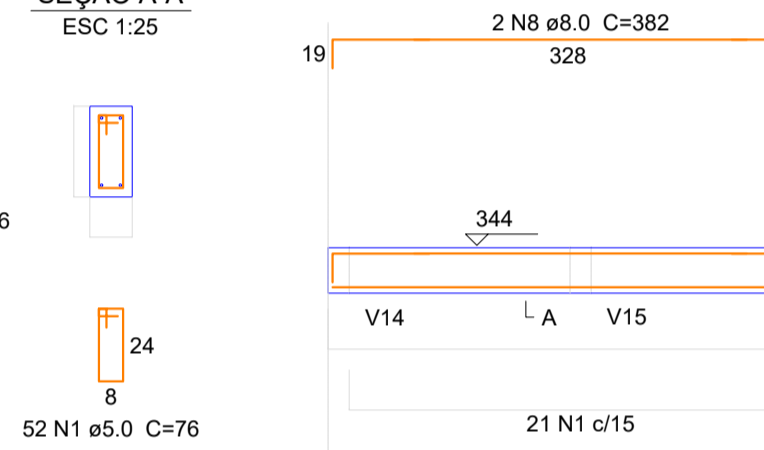
V2 ESC 1:50



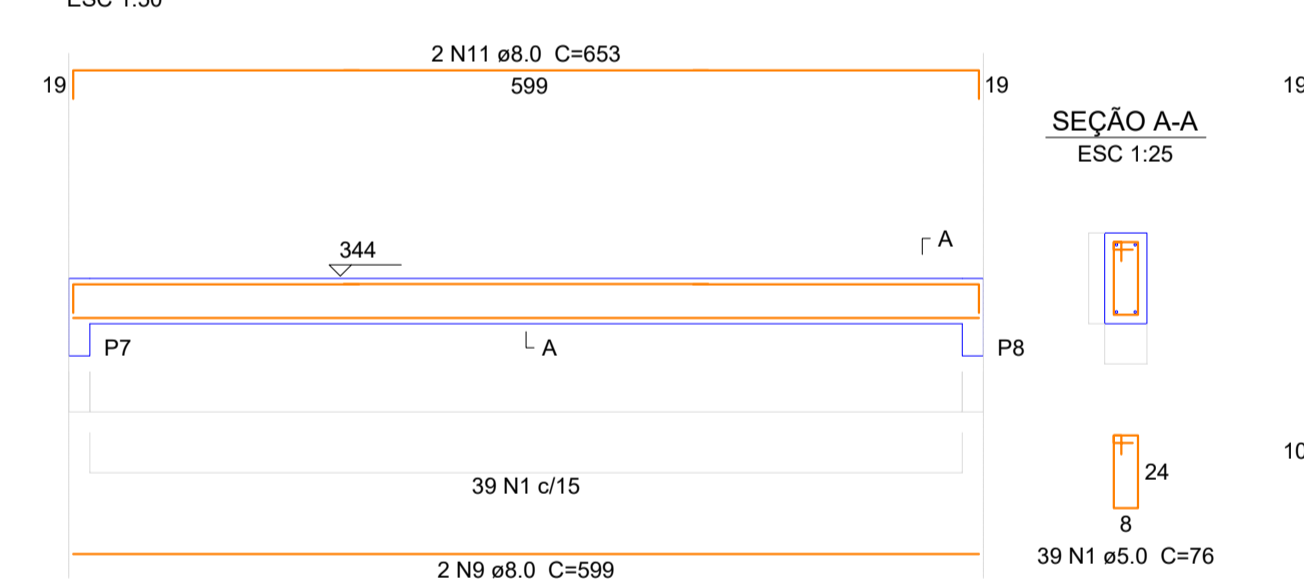
V3 ESC 1:50



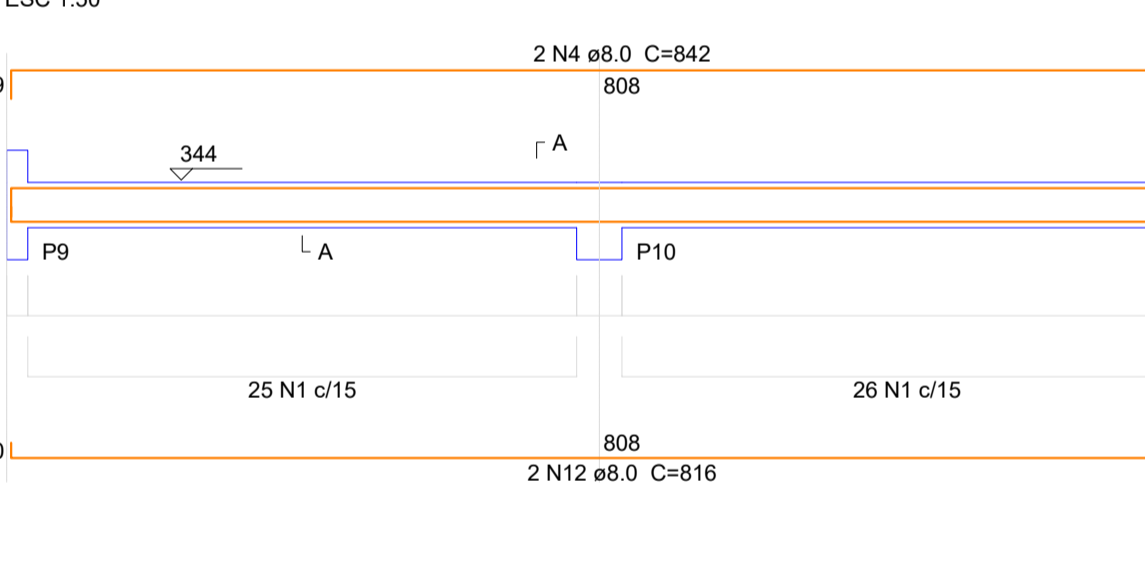
V4 ESC 1:50



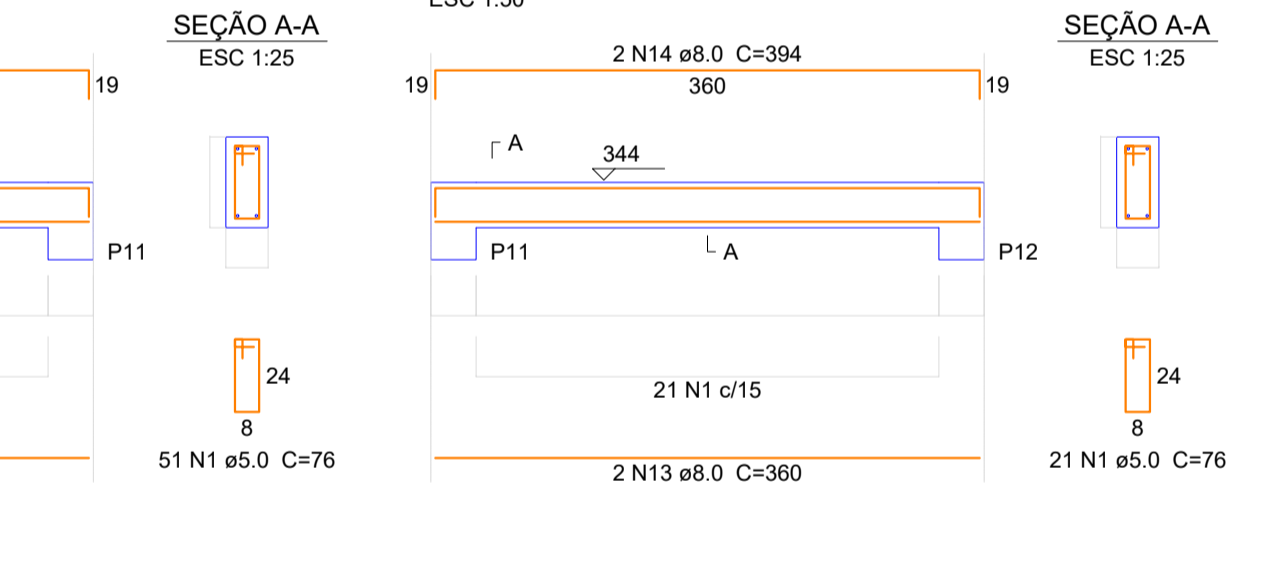
V5 ESC 1:50



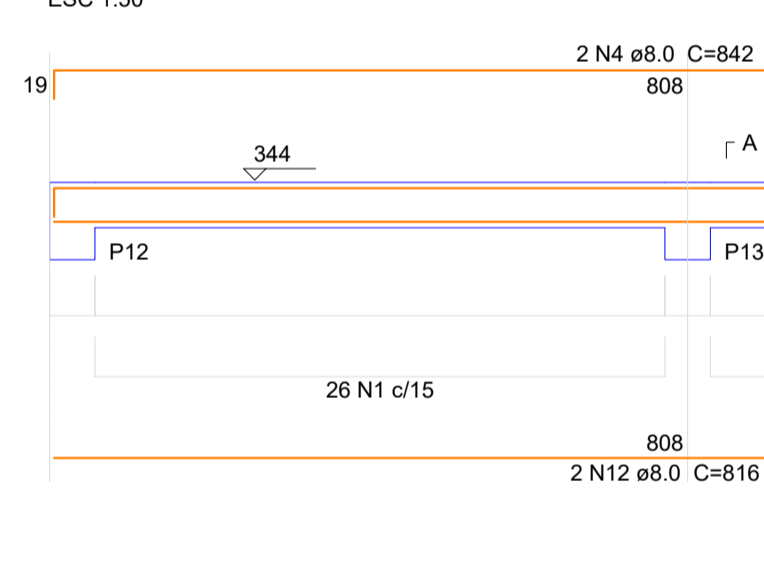
V6 ESC 1:50



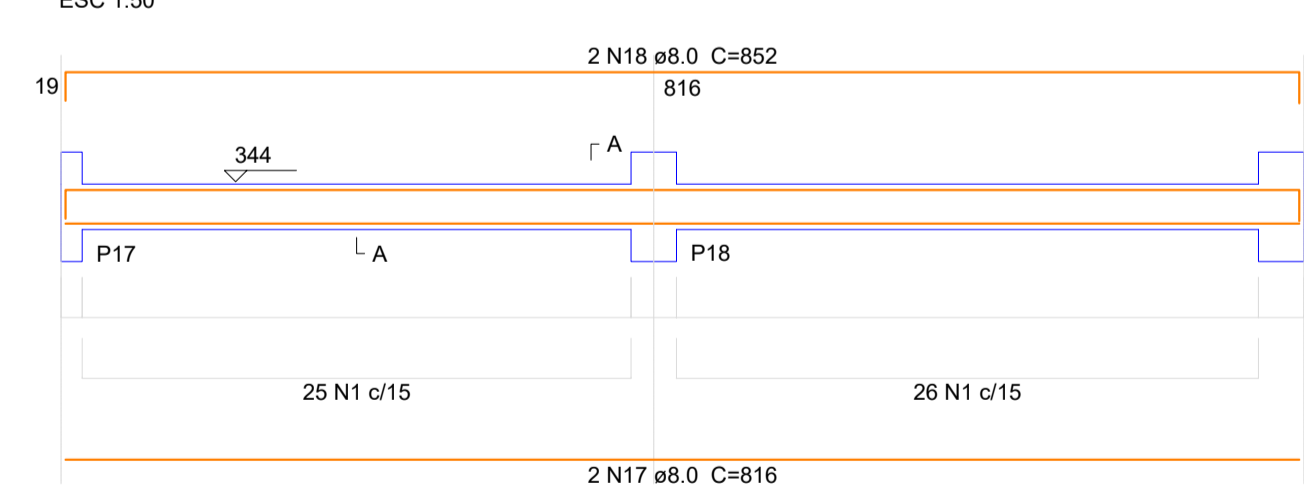
V7 ESC 1:50



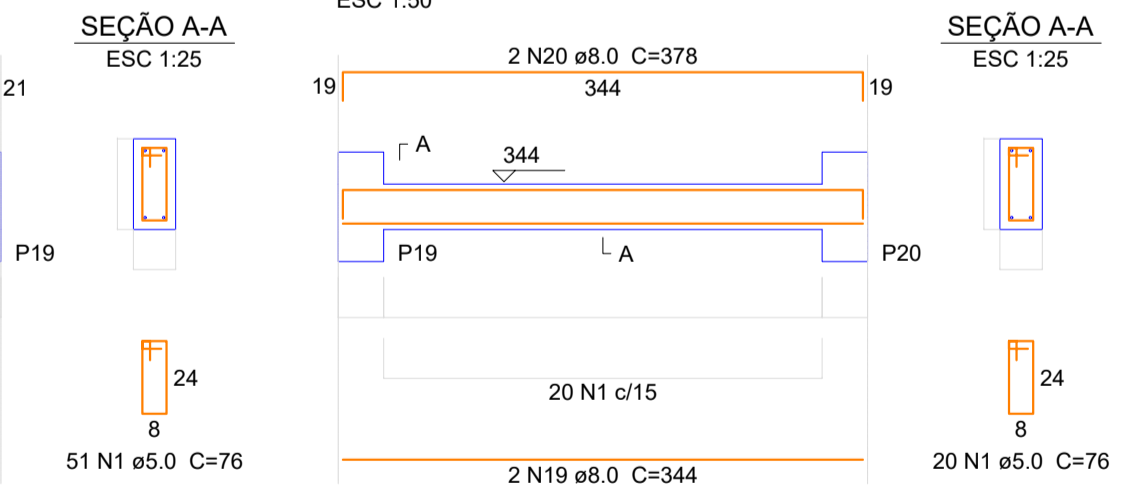
V8 ESC 1:50



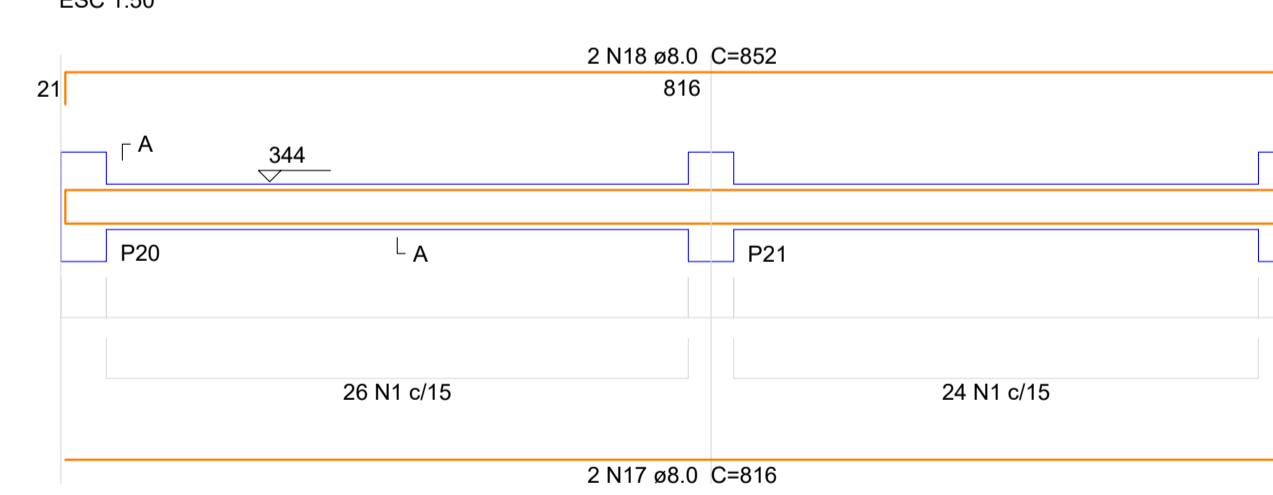
V10 ESC 1:50



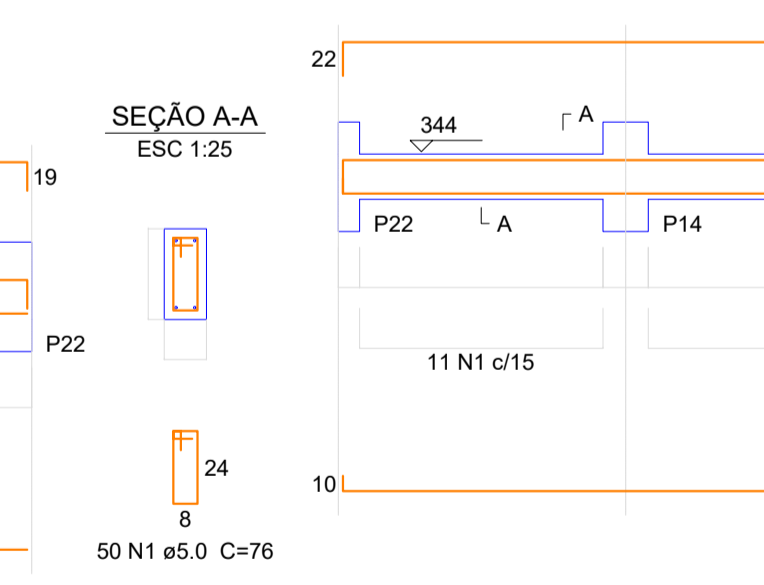
V11 ESC 1:50



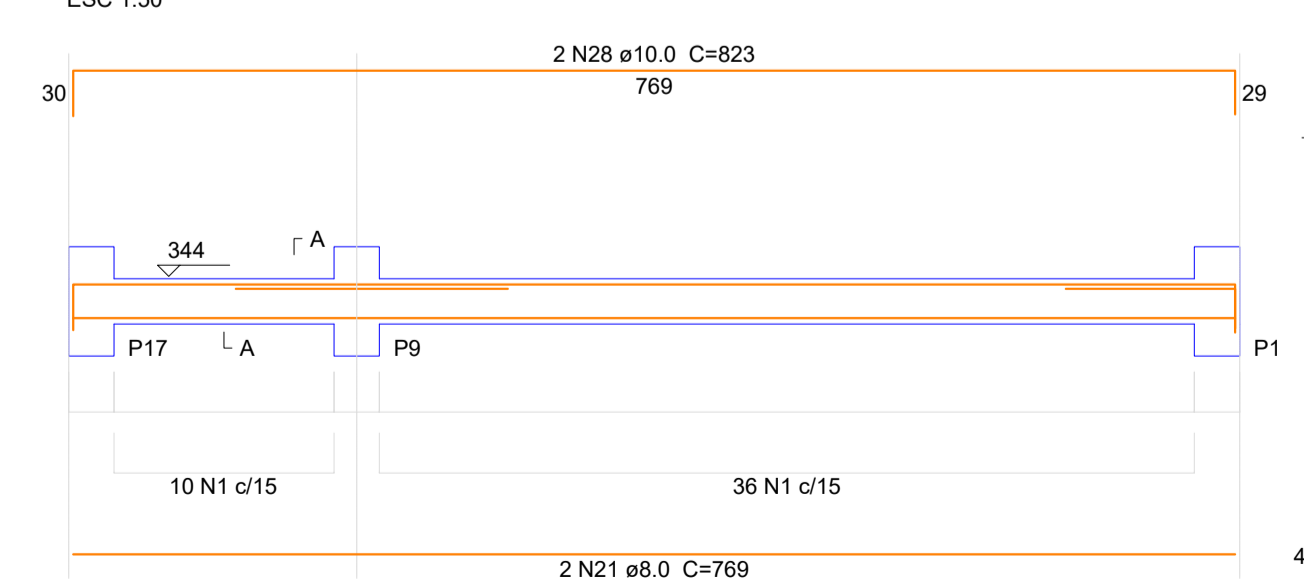
V12 ESC 1:50



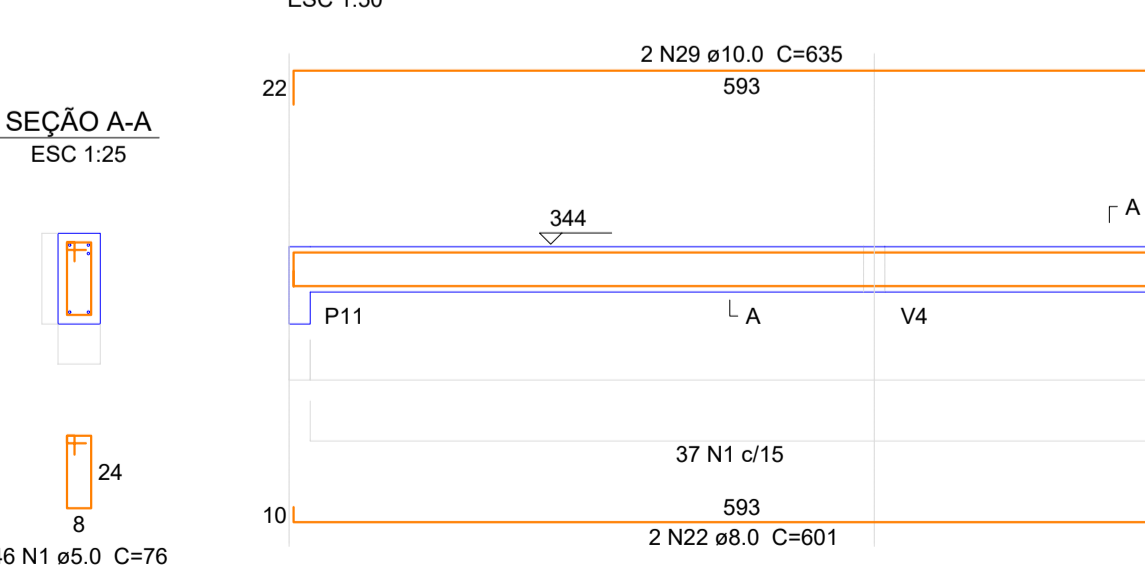
V17 ESC 1:50



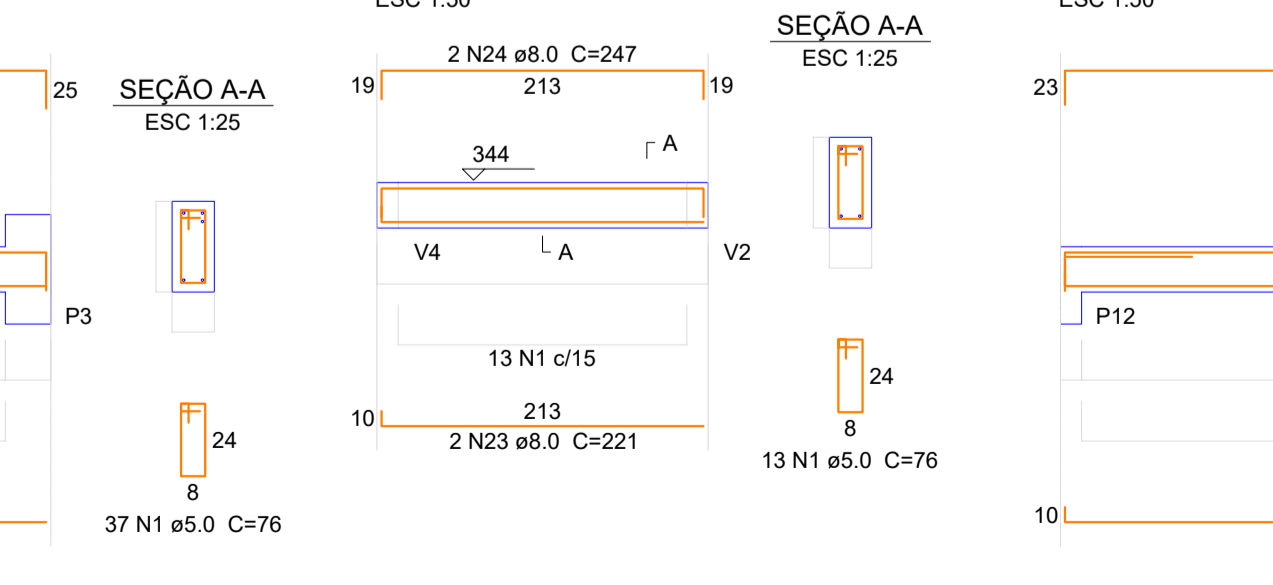
V13 ESC 1:50



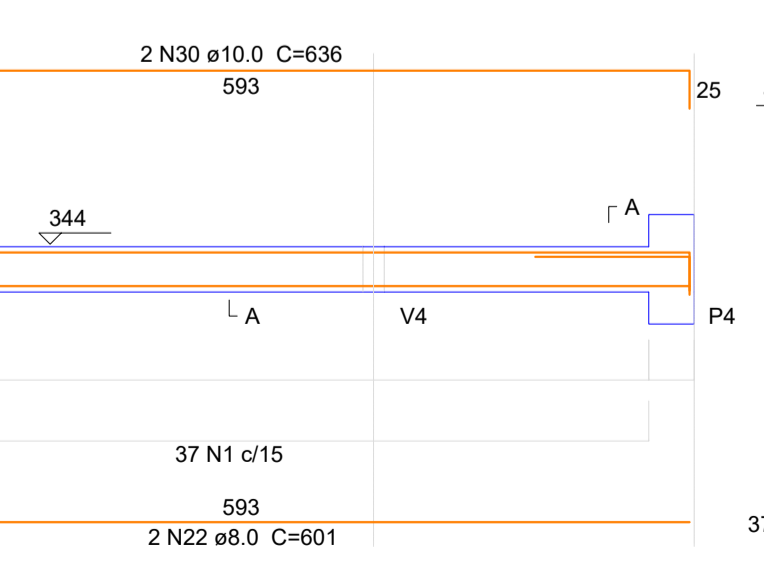
V14 ESC 1:50



V15 ESC 1:50



V16 ESC 1:50



Relação do aço

AÇO	N	DIAM (mm)	QUANT (Barras)	UNIT (cm)	C.TOTAL (cm)
CA60	1	5.0	1142	76	86792
CA50	3	8.0	4	808	3232
	4	8.0	8	842	6736
	5	8.0	4	328	1312
	6	8.0	2	362	724
	7	8.0	4	81	324
	8	8.0	2	220	440
	9	8.0	4	599	2396
	10	8.0	4	206	824
	11	8.0	2	241	482
	12	8.0	4	816	3264
	13	8.0	2	360	720
	14	8.0	2	394	788
	15	8.0	4	166	664
	16	8.0	2	321	642
	17	8.0	4	816	3264
	18	8.0	4	852	3408
	19	8.0	2	344	688
	20	8.0	2	378	756
	21	8.0	2	769	1538
	22	8.0	4	601	2404
	23	8.0	2	221	442
	24	8.0	2	247	494
	25	8.0	4	214	856
	26	8.0	4	248	992
	27	8.0	2	776	1552
	28	10.0	2	823	1646
	29	10.0	2	635	1270
	30	10.0	2	636	1272
	31	10.0	2	822	1644
	32	10.0	24	343	8232
	33	10.0	32	302	9664
	34	10.0	48	302	14496

Resumo do aço

AÇO	DIAM (mm)	C.TOTAL (m)	BARRA + 10% (kg)
CA50	8.0	389.5	36
	10.0	382.24	35
CA60	5.0	867.92	80

Volume de concreto (C-25) = 16.86 m³
Área de forma = 99.44 m²

PREF. MUN. DE SÃO CRISTOVÃO DO SUL

PROJETO AMPLIAÇÃO NÚCLEO EDUCACIONAL MEU POSTINHO

ESTRUTURAL PLANTA FORMA TERREO / DET VIGAS E PILARES TERREO

MUNICÍPIO DE SÃO CRISTOVÃO DO SUL

ENG. CIRO FONTANA SURDI

225,61M²

INDICADA

03/01/2021