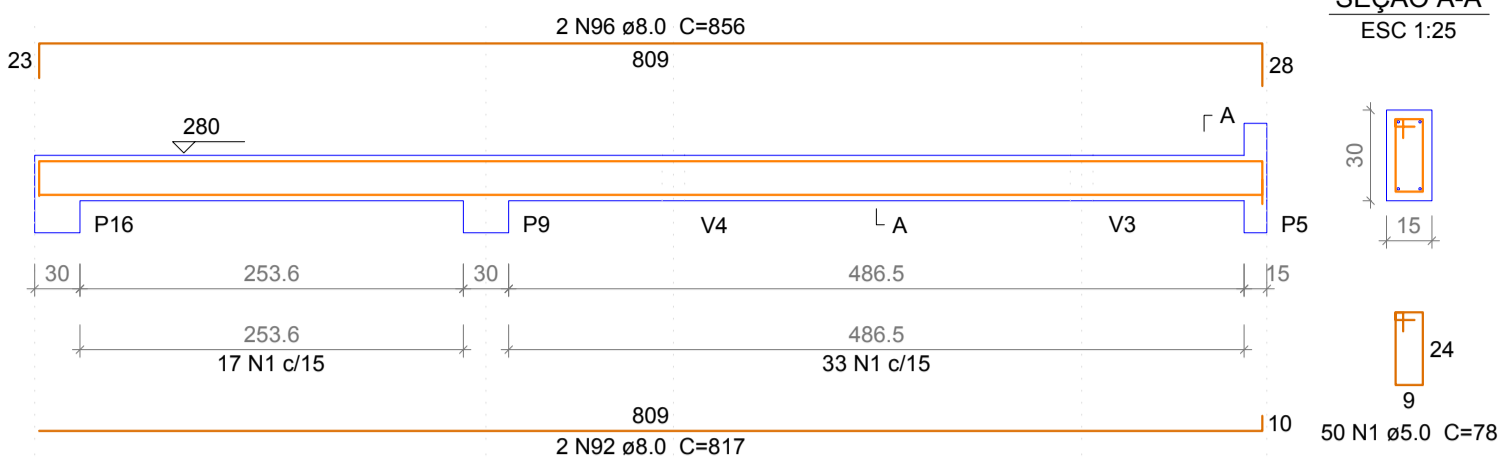
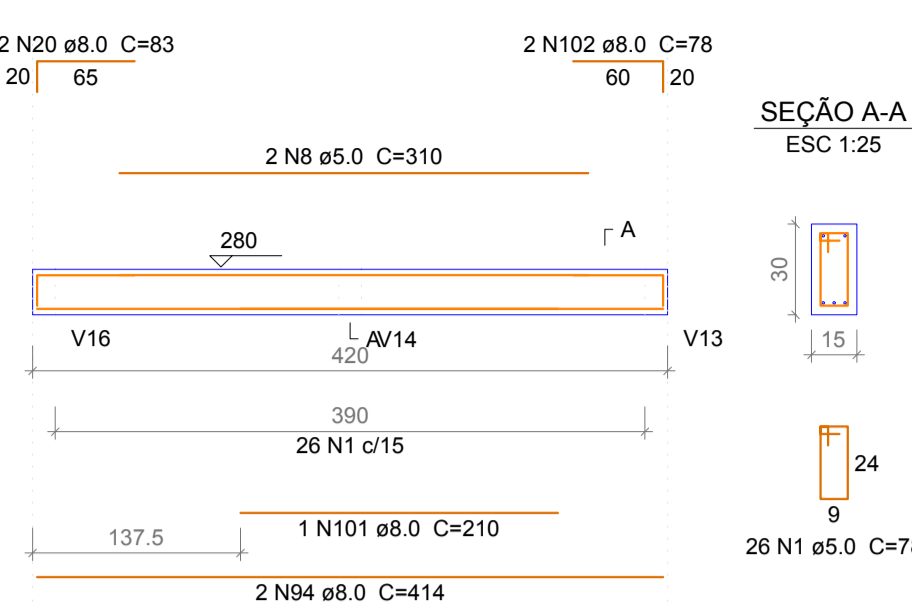


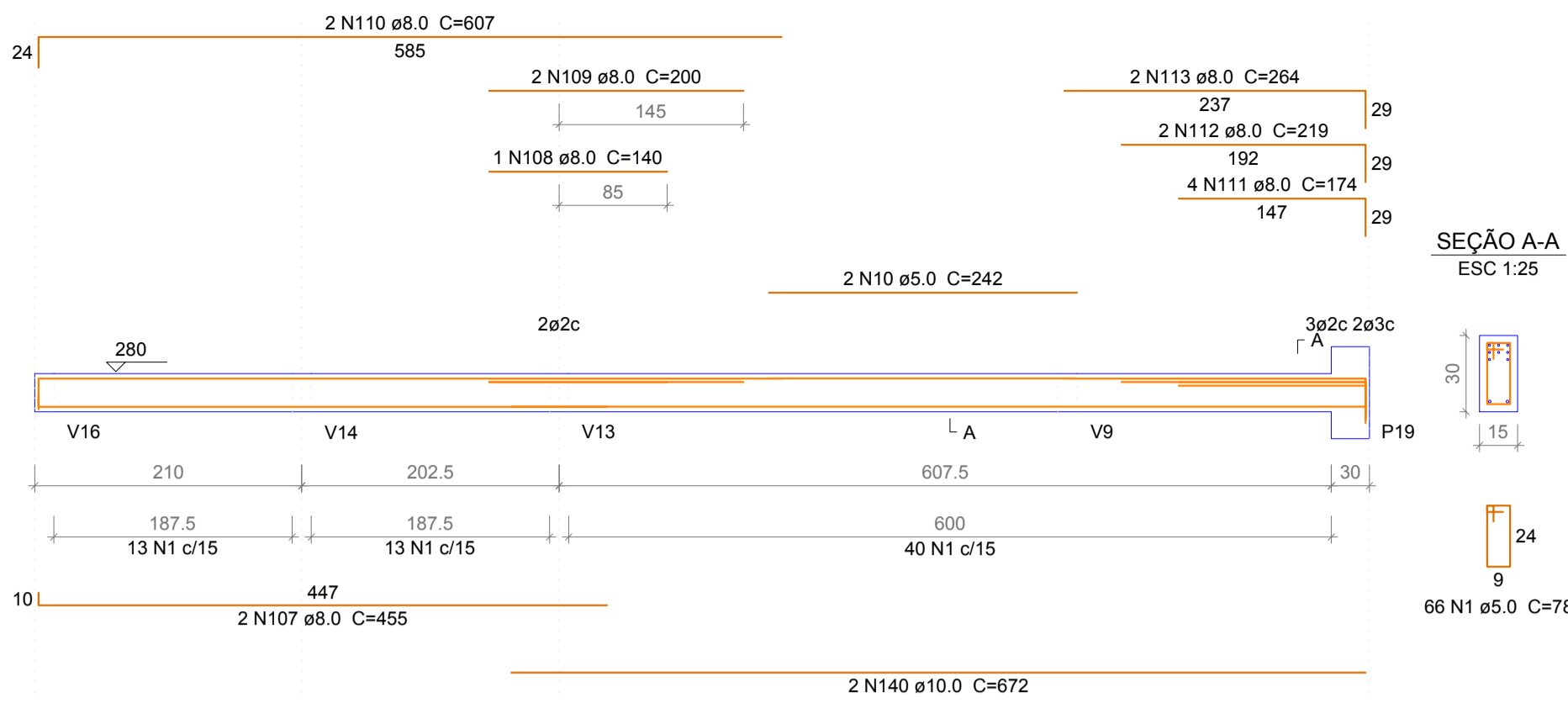
V40
ESC 1:50



V43=V45
ESC 1:50



V40
ESC 1:50

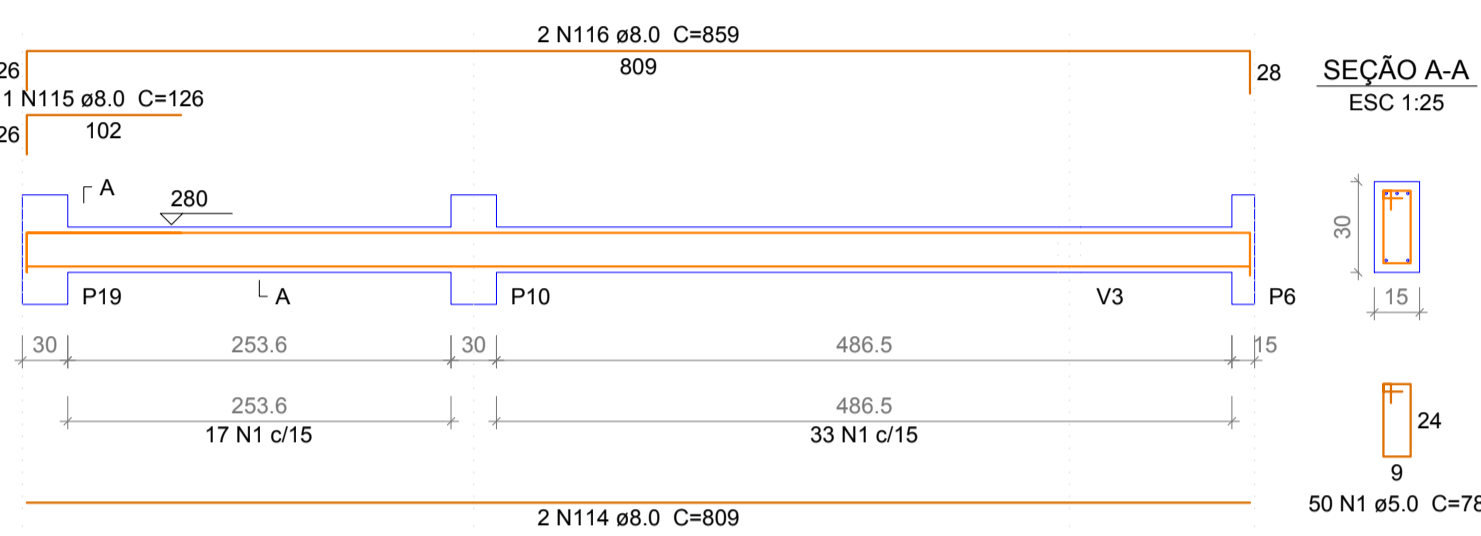


Resumo do aço

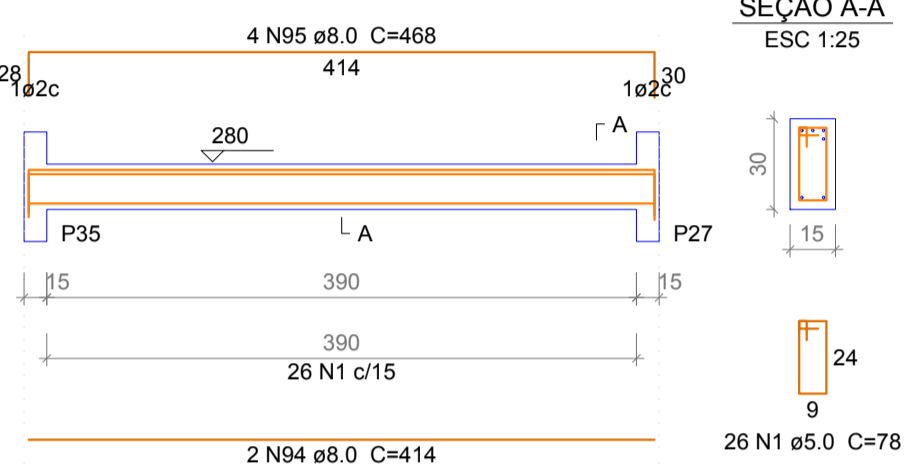
ÇO	DIAM (mm)	C.TOTAL (m)	PESO + 10 % barras
CA50	6.3	7.9	1
	8.0	780.14	65
	10.0	107	9
	12.5	103	9
PESO TOTAL (kg)		1043.2	87

Volume de concreto (C-30) = 9.38 m³
Área de forma = 142.19 m²

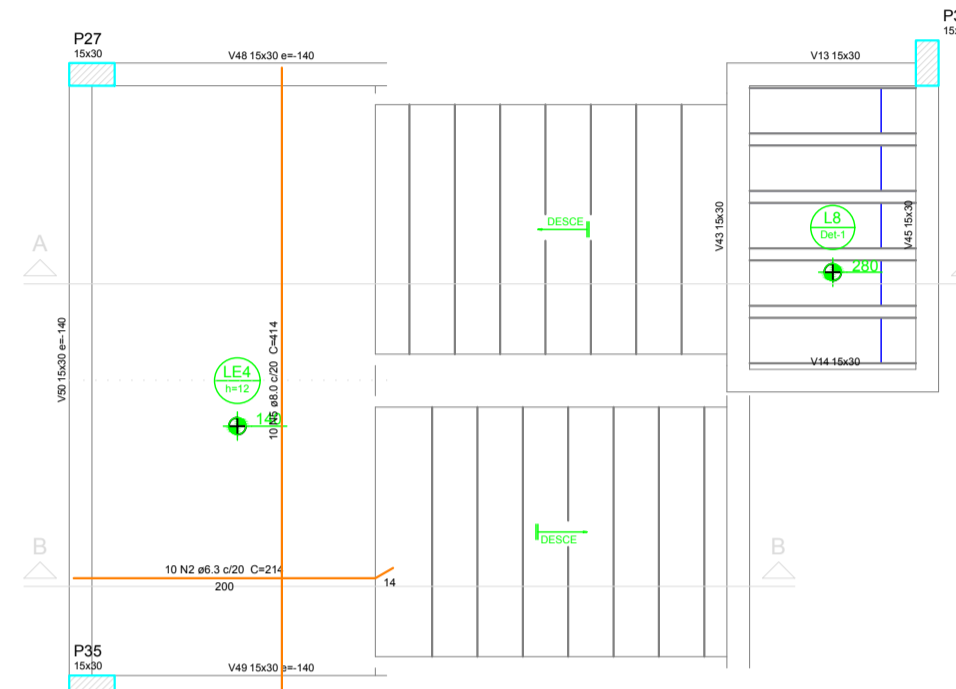
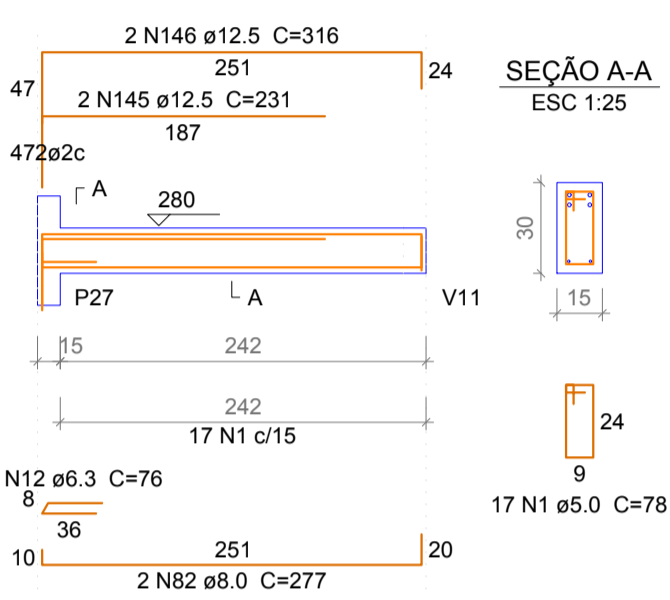
V47
ESC 1:50



V36
ESC 1:50



V37
ESC 1:50



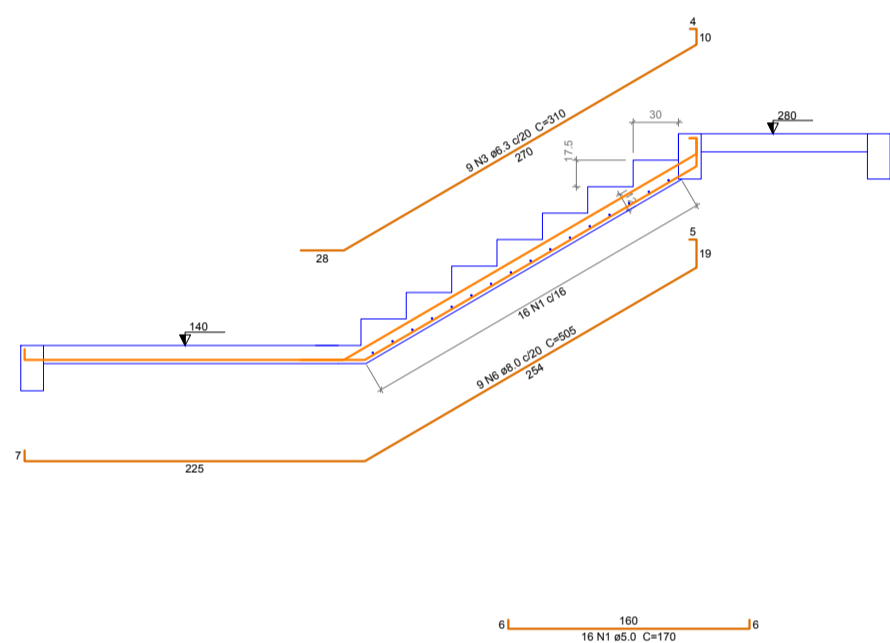
Resumo do aço

ÇO	DIAM (mm)	C.TOTAL (m)	PESO + 10 % barras
CA50	6.3	7.9	1
	8.0	780.14	65
	10.0	107	9
	12.5	103	9
PESO TOTAL (kg)		1043.2	87

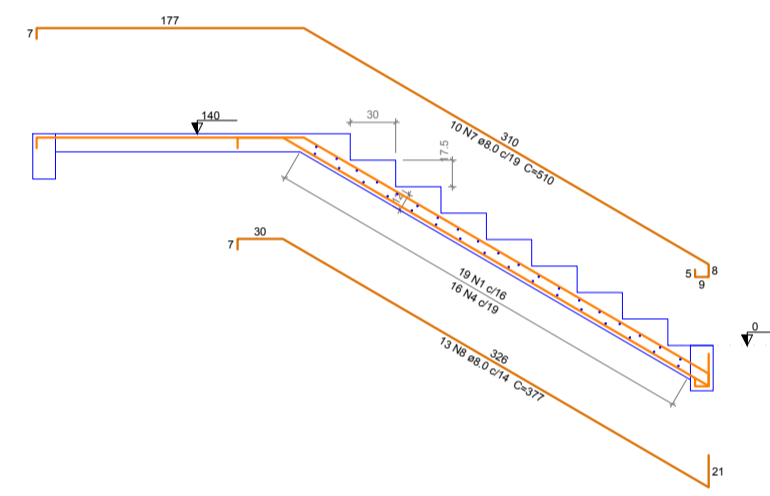
Volume de concreto (C-25) = 3.95 m³
Área de forma = 28.81 m²

Armação positiva da escada E1 escala 1:50

DETALHES VIGAS TERREO ESC 1/50



Corte A-A (LE2) escala 1:50



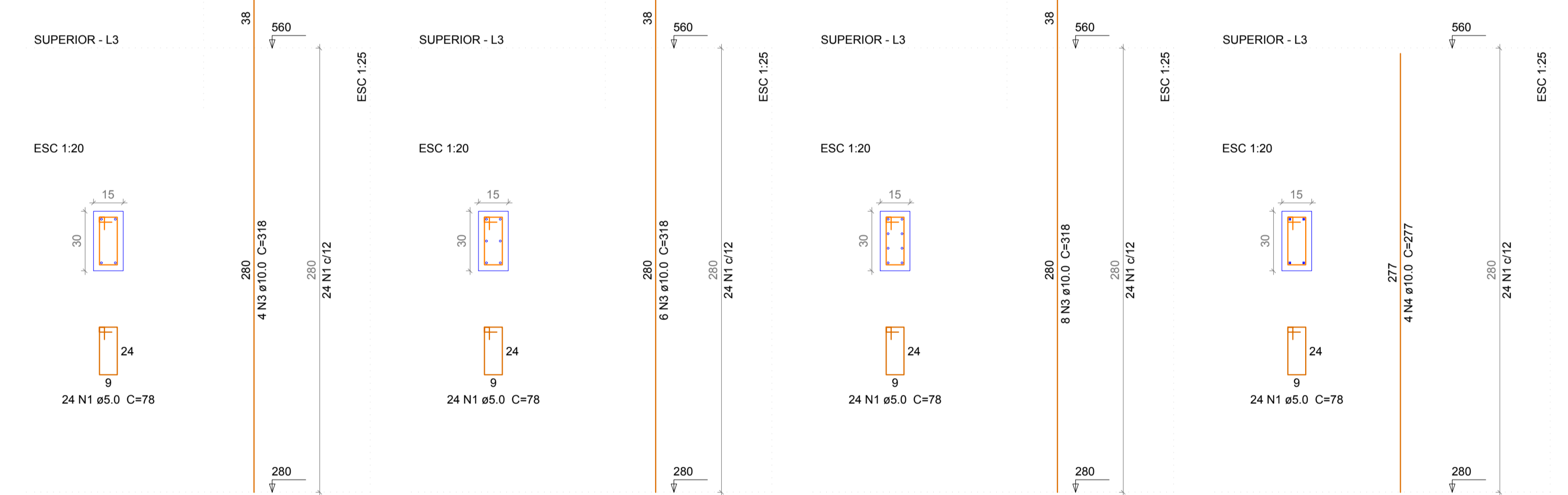
Corte B-B (LE3) escala 1:50

P12=P13=P14=P24=P25=P26=P38=P43=P44=P51

P17=P19=P34=P42

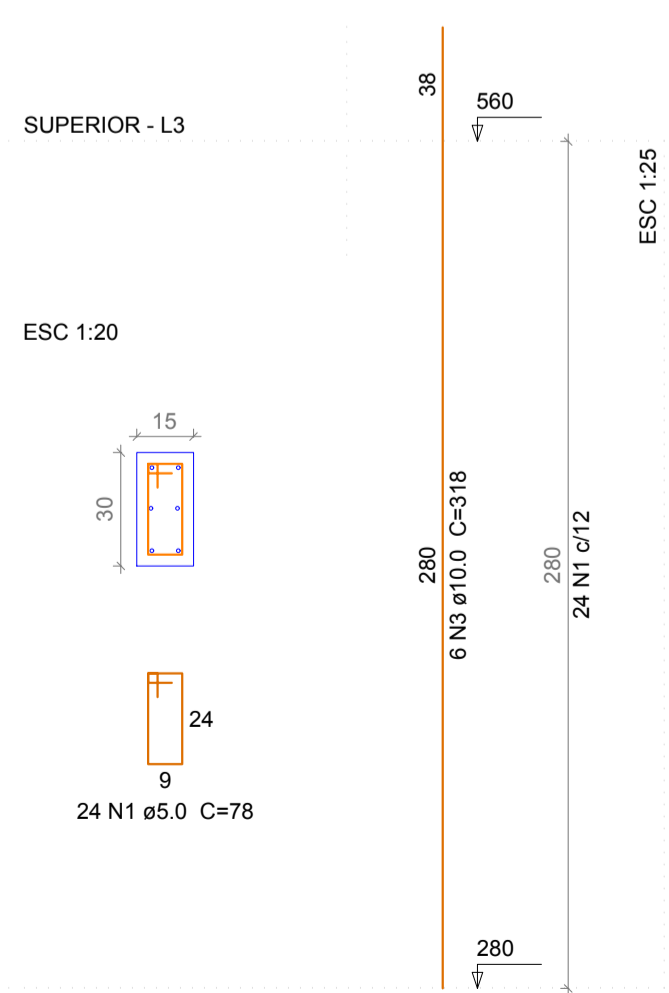
P32=P40=P27=P49

P23=P30=P33

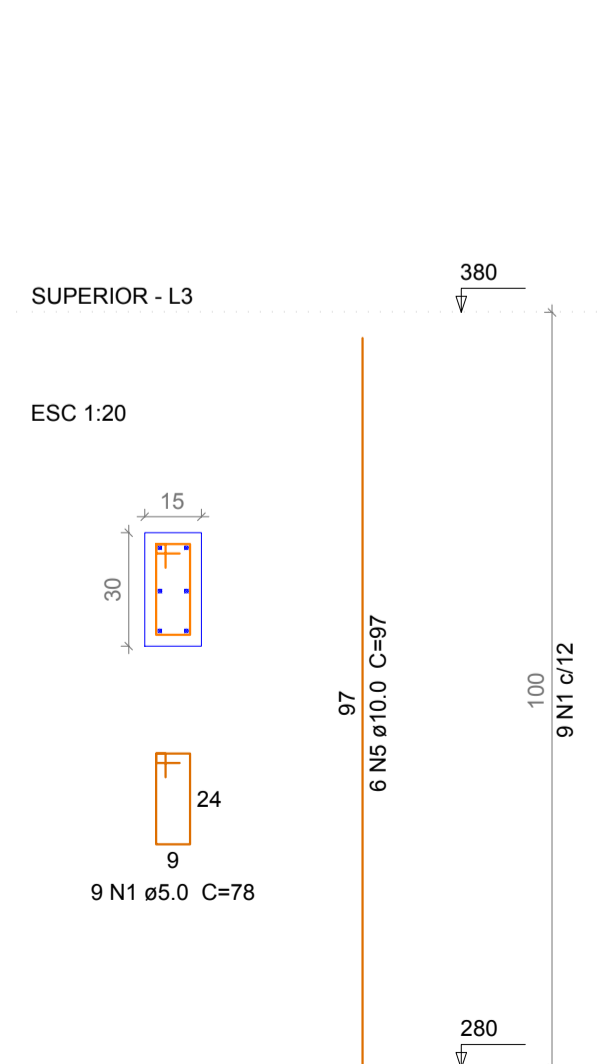


PILARES SUPERIOR ESC 1/50

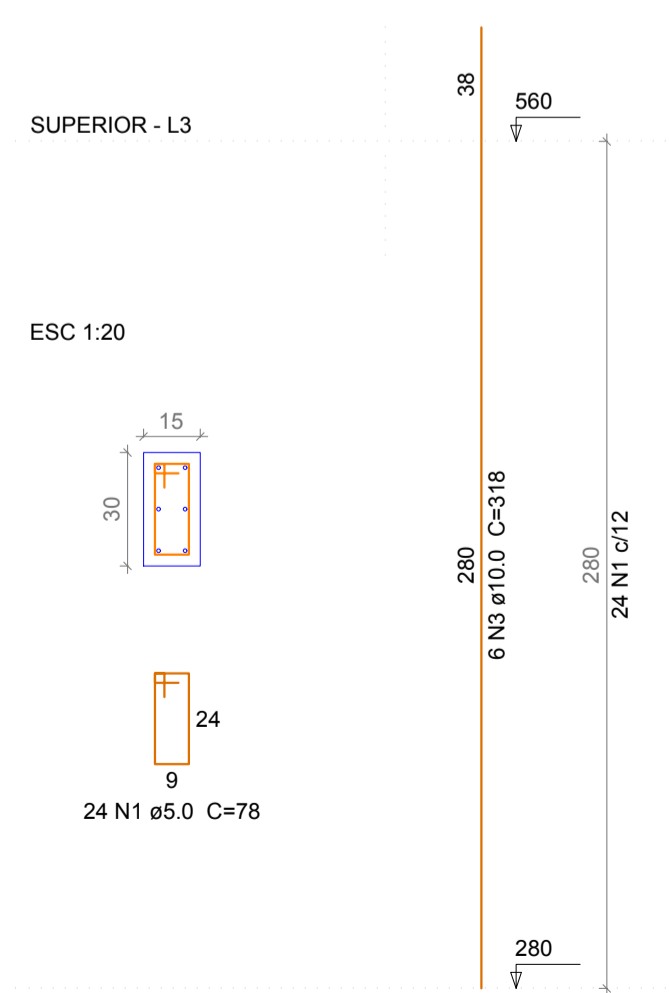
P35



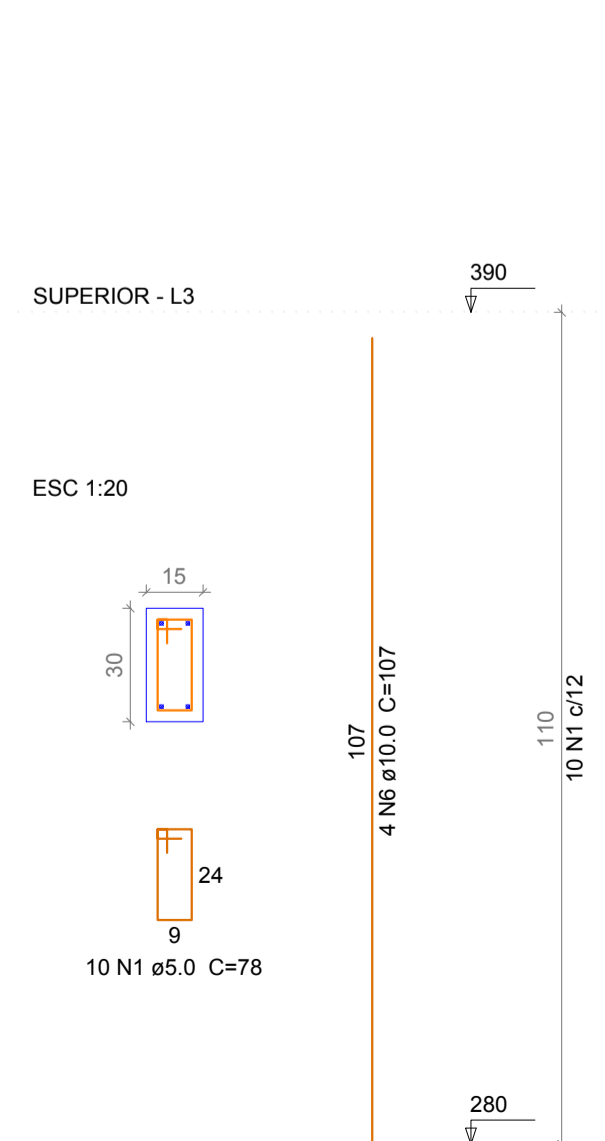
P20=P21=P47



P48



P1=P2=P3=P4=P5=P6=P7=P10=P11=P41=P52=P53=P54



Resumo do aço

ÇO	DIAM (mm)	C.TOTAL (m)	PESO + 10 % barras
CA50	10.0	513	47
CA60	5.0	630	58
PESO TOTAL (kg)			

Volume de concreto (C-25) = 4.31 m³
Área de forma = 78.22 m²

PILARES SUPERIOR ESC 1/50

PREF. MUN. DE SÃO CRISTOVÃO DO SUL

TÍTULO: PROJETO FIA – CENTRO CULTURAL

REFERÊNCIA: PROJETO ESTRUTURAL: VIGAS TERREO, ESCADA E PILARES SUPERIORES

PROPRIETÁRIO: MUNICÍPIO DE SÃO CRISTOVÃO DO SUL

RESPONSÁVEL TÉCNICO: ENG. CIRO FONTANA SURDI

DESENHO: 03

ESCALA: INDICADA

DATA: 28/10/2020

FRANCHA: ES/04

Rua Juvenino França de Moraes, 19
São Cristovão do Sul
FONE 49 3253-1200

CREA/SC 663545-0